

LEGEND

	DEMOLITION
	CEILING JUNCTION BOX, LETTER DENOTES POWER (P) OR DATA (D)
	WALL MOUNTED JUNCTION BOX, LETTER DENOTES POWER (P) OR DATA (D)
	WALL MOUNTED DUPLEX RECEPTACLE, NEMA 5-20R, +18" AFF, UON.
	WALL MOUNTED RECEPTACLE WITH GROUND FAULT INTERRUPTER, NEMA 5-20R, +18" AFF, UON.
	WALL DUPLEX RECEPTACLE WITH MARKED CONTROLLED CIRCUIT PER TITLE 24, NEMA 5-20R, +18" AFF, UON
	WALL MOUNTED QUADRUPLEX RECEPTACLE, NEMA 5-20R, +18" AFF, UON.
	RECEPTACLE, NEMA 6-50R, 208V, 50A, +18" AFF, UON
	FLOOR MOUNTED DUPLEX RECEPTACLE, NEMA 5-20R
	FLOOR MOUNTED QUADRUPLEX RECEPTACLE, NEMA 5-20R
	FLOOR MOUNTED QUADRUPLEX RECEPTACLE WITH MARKED CONTROLLED CIRCUIT PER TITLE 24, NEMA 5-20R
	FLUSHED 480/277 PANELBOARD
	FLUSHED 208/120V PANELBOARD
	SURFACE 208/120V PANELBOARD
	CONCEALED EMT CONDUIT IN WALL OR CEILING, 3/4" MIN.
	PVC CONDUIT UNDER FLOOR, 1" MIN.
	1" CONDUIT STUB UP INTO ACCESSIBLE CEILING OR WALL SPACE, UON.
	CONDUIT HOMERUN TO PANEL. HASHMARKS INDICATE NUMBER OF CONDUCTORS, 3/4" MIN. WITH #12 MIN., THHN, CU, 600V, DEDICATED #12 AWG NEUTRAL WIRES, AND 1 GROUND WIRE, UON. HOT A, B, C N (DEDICATED) GND
	MOTOR
	SWITCH 20A, SINGLE POLE, 120/277V, +48" TO TOP, UON. LETTER DENOTES SWITCHING CIRCUIT
	DIMMER SWITCH 20A, SINGLE POLE, 120/277V, +48" TO TOP, UON. LETTER DENOTES SWITCHING CIRCUIT
	WALL MOUNTED INFRARED OCCUPANCY SENSOR WITH DIMMER SWITCH, +48" TO TOP, LETTER DENOTES SWITCHING CIRCUIT
	CEILING ULTRASONIC AND INFRARED DUAL OCCUPANCY SENSOR, SHALL CONTROL LIGHTS AND CONTROLLED RECEPTACLE WHEN APPLICABLE PER TITLE 24, LETTER DENOTES SWITCHING CIRCUIT
	CEILING PHOTOCCELL SENSOR MOUNTED CLOSE TO SKYLIGHT OPENING, LETTER DENOTES SWITCHING CIRCUIT
	VOICE/DATA OUTLET AT WALL, +18" AFF
	FLOOR QUAD VOICE/DATA OUTLET
	FIRE ALARM PULL STATION, WALL MOUNT, +48" TO TOP, UON.
	FIRE ALARM STROBE, WALL MOUNT, +96" TO TOP, UON.
	LIGHT FIXTURE TAG MOUNTING HEIGHT LIGHT FIXTURE TYPE WATTAGE
	TRANSFORMER
	FOB ACCESS, COORDINATE WITH REDWOOD CITY CONSULTANT: JOHN DORNIK (JOHN@INTEGRATEDACCESSSECURITY.COM)
	DEMAND METER
	CIRCUIT BREAKER, SIZE AS INDICATED
	DELTA-WYE TRANSFORMER

ABBREVIATIONS

A/V	AUDIO/VISUAL
AWG	AMERICAN WIRE GAUGE
BLDG	BUILDING
C	CONDUIT
CKT	CIRCUIT
CO	CONDUIT ONLY
(D)	DEMOLITION
DWG(S)	DRAWING(S)
(E)	EXISTING
E/ELEC	ELECTRICAL
FLR	FLOOR
GFI	GROUND FAULT INTERRUPTER
GND	GROUND
IG	ISOLATED GROUND
LTG	LIGHTING
MIN	MINIMUM
MAX	MAXIMUM
(N)	NEW
N	NEUTRAL
NTS	NOT TO SCALE
REX	READY TO EXIT
RM	ROOM
RCPT	RECEPTACLE
TYP	TYPICAL
UON	UNLESS OTHERWISE NOTED
V	VOLTAGE
VFD	VARIABLE FREQUENCY DRIVE
W	WATTAGE
WP	WEATHERPROOF COVER

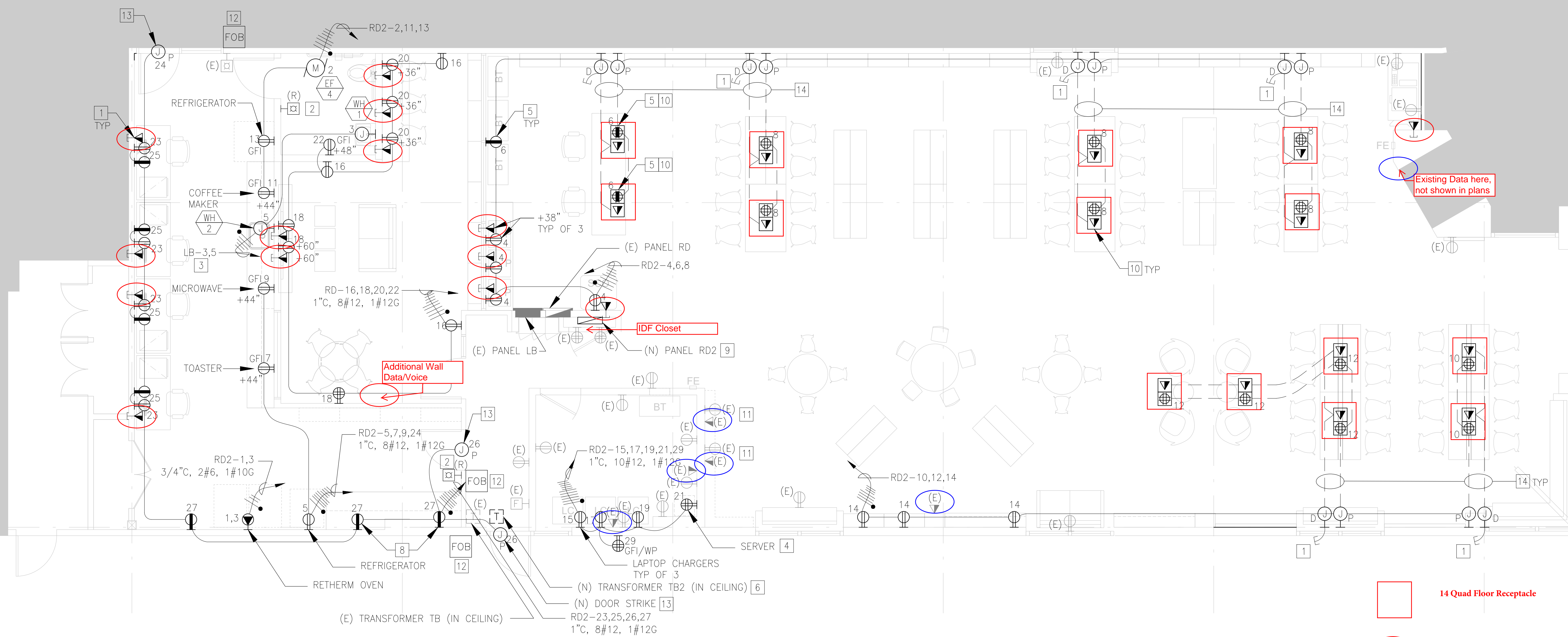
GENERAL NOTES

- EXAMINE ALL DRAWINGS AND FIELD VERIFY (E) ELECTRICAL CONDITIONS INCLUDING VOLTAGES, EXISTING CIRCUITS AND EXACT ROUTING OF ALL CONDUITS AND CONDITIONS IN AND AROUND CONDUIT RUNS.
- COORDINATE ALL WORK TO AVOID INTERFERENCE BETWEEN ALL TRADES INCLUDING OTHER ONGOING CONSTRUCTION WHICH MAY INTERFERE.
- PERFORM WORK IN ACCORDANCE WITH THE LATEST EDITIONS, REVISIONS, AMENDMENTS OR SUPPLEMENTS OF APPLICABLE STATUTES, ORDINANCES, CODES OR REGULATIONS OF STATE AND LOCAL AUTHORITIES HAVING JURISDICTION.
- REPORT ANY DISCREPANCY TO ARCHITECT/ENGINEER PRIOR TO ANY WORK.
- CONTRACTOR SHALL BE RESPONSIBLE FOR PROTECTION AND PROVIDE REPAIR OF ADJACENT EXISTING SURFACES, AREAS AND PROPERTY THAT MAY BE DAMAGED AS A RESULT OF NEW WORK.
- THE DRAWINGS ARE DIAGRAMMATIC AND SHALL NOT BE SCALED TO DETERMINE EXACT LOCATION OF ELECTRICAL EQUIPMENT. THE CONTRACTOR SHALL BE RESPONSIBLE FOR INSTALLING CONDUITS, SURFACE-MOUNTED RACEWAYS, FITTINGS AND JUNCTION BOXES TO CONFORM WITH FIELD CONDITIONS. CONTRACTOR IS RESPONSIBLE FOR ADEQUATELY REINFORCING WALLS AND/OR CEILINGS TO SUPPORT LIGHT FIXTURE WEIGHT. COMPLY WITH APPLICABLE CODES.
- THE INSTALLATION OF THIS PROJECT SHALL BE MADE IN COMPLIANCE WITH THE LATEST EDITIONS OF THE NEC, NECA 1 STANDARD PRACTICE OF GOOD WORKMANSHIP IN ELECTRICAL CONSTRUCTION, IEEE 3001.5-2013 RECOMMENDED PRACTICE FOR THE APPLICATION OF POWER DISTRIBUTION APPARATUS IN INDUSTRIAL & COMMERCIAL POWER SYSTEMS, IEEE 3003.2-2014 RECOMMENDED PRACTICE FOR EQUIPMENT GROUNDING & BONDING IN INDUSTRIAL & COMMERCIAL POWER SYSTEMS, NATIONAL ELECTRICAL SAFETY CODE OR ANSI STANDARD C2 AND APPLICABLE CODES.
- ALL RACEWAYS SHALL BE CONCEALED IN CEILINGS AND WALLS.
- CONTRACTOR TO FIELD VERIFY ALL DIMENSIONS AND MOUNTING HEIGHTS PRIOR TO ELECTRICAL EQUIPMENT/DEVICE INSTALLATION.
- VERIFY EXISTING CIRCUITING PRIOR TO ANY WORK. MAINTAIN POWER TO ALL UN-AFFECTED AREAS.
- MAINTAIN ALL BUILDING SECURITY, FIRE ALARM & FIRE PROTECTION SYSTEMS AT ALL TIME.
- ALL CONDUITS PENETRATING THROUGH WALLS SHALL BE SEALED. ALL PENETRATIONS SHALL HAVE 6" NOMINAL CLEARANCE FROM ANY CONDUITS, PIPING, FINISHED WALLS, EQUIPMENT, DUCTWORK, ETC. SUBMIT PROPOSED LOCATIONS AND DETAIL SHOWING CLEARANCES FOR ENGINEERING APPROVAL.

LIGHT FIXTURE SCHEDULE

SYMBOL	TYPE	VOLTAGE	WATTAGE	DESCRIPTION
	A1	277V	28W LED	4' LENGTH RECESSED LED DIRECT LIGHT FIXTURE, EXTRUDED AND MACHINED ALUMINUM, CLEAR ANODIZED FINISH, CLASS 2 CONSTANT CURRENT DIMMING DRIVER VODE 707-Z2-48-AE-2-Z-SO-35-S3
	A2	277V	42W LED	SAME AS ABOVE BUT 6' LENGTH VODE 707-Z2-72-AE-2-Z-SO-35-S3
	C	277V	45W LED	4.5" SQUARE RECESSED LED DOWNLIGHT, DIE-CAST ALUMINUM HOUSING, DIE-FORMED ALUMINUM REFLECTOR, 0-10V DIMMING DRIVER, 3000L, 3500K COLOR TEMPERATURE FOCAL POINT FLC44D-SO-3000L-277-LD1-T // LC44-SQ-3000L-35K-DN
	CX	277V	45W LED	SAME AS ABOVE WITH EMERGENCY BATTERY PACK FOCAL POINT FLC44D-SO-3000L-277-LD1-T-EM // LC44EM-SQ-3000L-35K-DN
	X	277V	LED	RECESSED LED EXIT SIGN IN BRUSHED ALUMINUM HOUSING, CLEAR ACRYLIC BACKGROUND, GREEN LETTERS. ARROW DENOTES DIRECTION OF EGRESS, CONNECTED TO EXISTING EMERGENCY CIRCUIT (LITHONIA #EDGR-G-EL OR APPROVED EQUAL)
	E	277V	2W LED	EMERGENCY LIGHTING UNIT, INJECTION-MOLDED, FLAME-RETARDANT, HIGH-IMPACT THERMOPLASTIC HOUSING, BATTERY PROVIDES 90 MINUTS OF EMERGENCY POWER (LITHONIA #EU2-LED-M12 OR APPROVED EQUAL)





- 14 Quad Floor Receptacle
- 15 Wall receptacle
- 6 Existing Data Ports

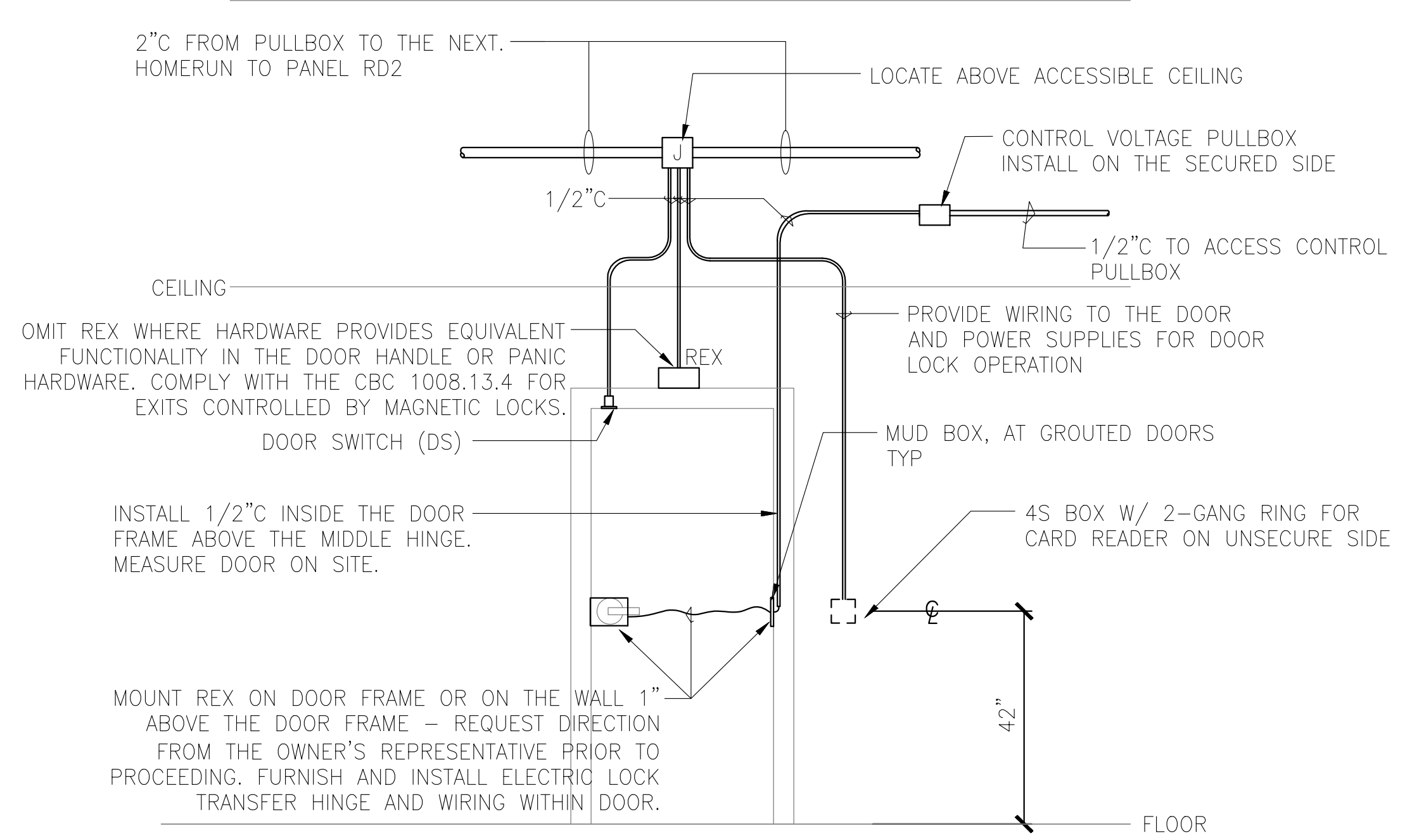
ELECTRICAL NEW WORK FLOOR PLAN
1/4" = 1'-0" 1 E201

SHEET NOTES

1. ALL DEVICES AND EQUIPMENT SHOWN ON THIS DWG ARE NEW, UON.
2. CONTRACTOR TO MAINTAIN CONTINUITY AND POWER TO UNAFFECTED EQUIPMENT, DEVICES, ETC. OUTSIDE THE PROJECT BOUNDARIES.
3. ALL SWITCHPLATE COVERS TO BE WHITE IN WHITE WALLS, AND ALMOND IN YELLOW WALLS.

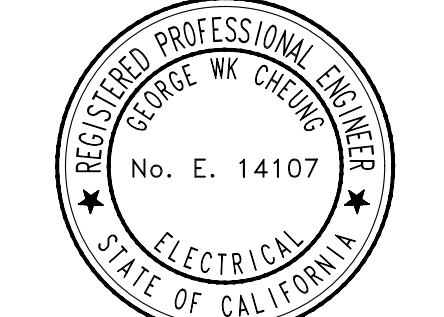
KEY NOTES

1. PROVIDE 1" C STUB UP INTO CEILING WITH PULL STRING. HOMERUN PLENUM RATED DATA CABLES TO DATA SERVER LOCATION.
2. RELOCATE FIRE ALARM DEVICE AND RECONNECT TO NEAREST (E) FIRE ALARM DEVICE.
3. PROVIDE POWER TO (N) INSTANT WATER HEATER. COORDINATE WITH MECHANICAL.
4. MOUNT (N) QUAD RECEPTACLE INSIDE SERVER BOX. COORDINATE HEIGHT AND LOCATION WITH ARCHITECT.
5. CONTROLLED RECEPTACLE SHALL BE CONTROLLED BY THE SAME OCCUPANCY SENSOR CONTROLLING LIGHTS WITHIN THE SAME ENCLOSED ROOM PER TITLE 24. SEE DWG E202 FOR OCCUPANCY SENSOR LOCATION. CONTROLLED RECEPTACLE SHALL BE LABELED IN FIELD ON EACH DEVICE.
6. PROVIDE (N) 15KVA TRANSFORMER TB2 IN CEILING. SEE SINGLE LINE DIAGRAM ON E002 FOR CONDUIT SIZE INFORMATION. CONFIRM INSTALLATION WITH STRUCTURAL ENGINEERS: KRISTINE@CROSBYGROUP.COM
7. PROVIDE JUNCTION BOX IN CEILING TO TRANSITION FROM CONCEALED CONDUIT TO TRENCHED RACEWAY. COORDINATE FINAL LOCATION WITH ARCHITECTURAL DWGS.
8. COORDINATE MOUNTING HEIGHT WITH ARCHITECTURAL DWGS.
9. PROVIDE (N) SURFACE MOUNTED PANEL RD2 IN CLOSET. SEE SINGLE LINE DIAGRAM ON E002 FOR ADDITIONAL INFORMATION AND DETAILS.
10. PROVIDE RECESSED FLOOR BOX WITH COMBINED POWER AND DATA OUTLETS (LEGRAND RFB4 OR EQUAL).
11. RELOCATE OUTLETS IN WALL TO COORDINATE WITH WALL DISPLAY UNIT. CHECK LOCATION WITH ARCHITECT.
12. (N) FOB SENSOR AND ALL ADDITIONAL CONNECTIONS SHALL BE PROVIDED BY THE VENDOR. REFER TO DETAIL 2 ON THIS SHEET BY VENDOR.
13. PROVIDE POWER TO (N) JUNCTION BOX ABOVE DOOR FOR SECURITY ACCESS REQUIREMENTS. REFER TO DETAIL 2 ON THIS SHEET BY VENDOR. PROVIDE CONDUIT AS NEEDED.
14. PROVIDE UNDER CARPET CABLING FOR POWER RECEPTACLES & DATA OUTLETS (POWER CABLE:TE#3-553079-1, COMMUNICATIONS CABLE:TE#149919-1, RECEPTACLE KITS:TE#554192-1, LOW PROFILE COMMUNICATIONS FLOOR FITTINGS:TE#555287-1)



SECURITY ACCESS CONNECTIONS
NTS 2 E201

NO	DATE	ISSUE	BY/CHECK
1	08.18.17	REVISED PERMIT SET	KX/JA/BH/GC
1	06.09.17	PERMIT SET	KX/JA/BH/GC



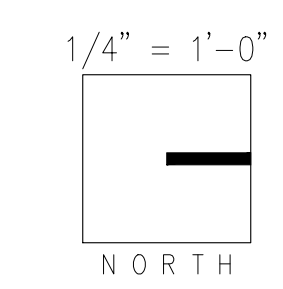
YEI ENGINEERS, INC.
7700 Edgewater Drive, Suite 128
Oakland, CA 94621 - (510) 383-1050
www.yeiengineers.com

All drawings and written material appearing herein constitute the original and unpublished work of the architect and may not be duplicated, used or disclosed without the prior written consent of the architect. © 2013 Huntsman Architectural Group

**FAIR OAKS BRANCH
LIBRARY RENOVATION
FIRST FLOOR
2500 MIDDLEFIELD
REDWOOD CITY, CA**

PROJECT: 08.18.16
PLOTTED: 08.18.16
CREATED: 04.06.16
FILE:
#6 IA
#6 IA

**ELECTRICAL
NEW WORK FLOOR PLAN**



E201