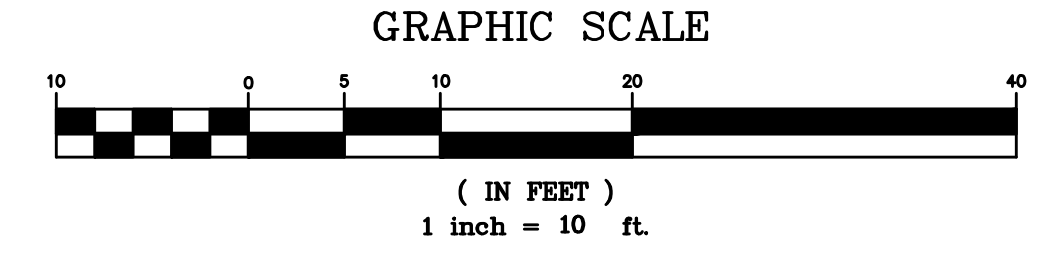
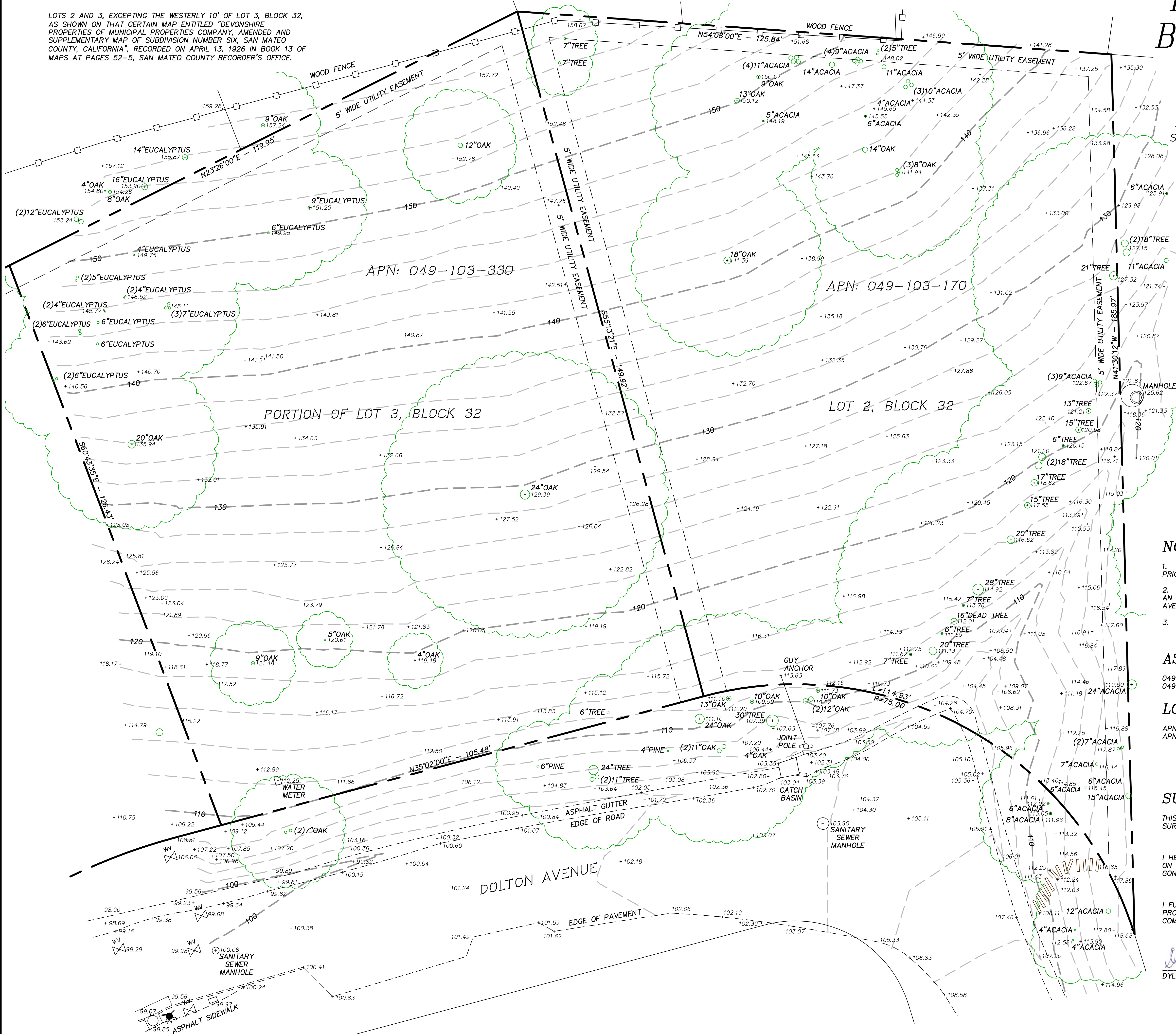


LEGAL DESCRIPTION

LOTS 2 AND 3, EXCEPTING THE WESTERLY 10' OF LOT 3, BLOCK 32, AS SHOWN ON THAT CERTAIN MAP ENTITLED "DEVONSHIRE PROPERTIES OF MUNICIPAL PROPERTIES COMPANY, AMENDED AND SUPPLEMENTARY MAP OF SUBDIVISION NUMBER SIX, SAN MATEO COUNTY, CALIFORNIA", RECORDED ON APRIL 13, 1926 IN BOOK 13 OF MAPS AT PAGES 52-5, SAN MATEO COUNTY RECORDER'S OFFICE.

TOPOGRAPHIC AND BOUNDARY SURVEY

DOLTON AVENUE
CITY OF SAN CARLOS
SAN MATEO COUNTY - CALIFORNIA
SCALE: 1 INCH = 10 FEET
OCTOBER 2019



NOTES:

- CONTRACTOR SHALL VERIFY THE LOCATION OF ALL UTILITIES PRIOR TO CONSTRUCTION.
- BASIS OF ELEVATION: ELEVATIONS SHOWN ARE BASED UPON AN ASSUMED ELEVATION. ELEVATION OF MANHOLE IN DOLTON AVENUE AT CURVE IN ROAD SHOWN HEREON TAKEN AS 103.80 FEET.
- 2' CONTOUR INTERVAL.

ASSESSOR PARCEL NUMBER:

049-103-170
049-103-330

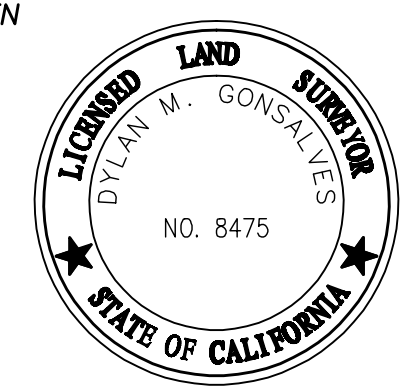
LOT AREA:

APN 049-103-170: 15,739± SQUARE FEET
APN 049-103-330: 15,450± SQUARE FEET

SURVEYOR'S STATEMENT

THIS MAP CORRECTLY REPRESENTS A TOPOGRAPHIC AND BOUNDARY SURVEY MADE BY ME OR UNDER MY DIRECTION AT THE REQUEST OF:
IRENE VELASQUEZ IN: SEPTEMBER 2019
I HEREBY STATE THAT THE TOPOGRAPHY AND BOUNDARIES SHOWN ON THIS MAP IS BASED UPON A SURVEY MADE BY ME, DYLAN M. GONSALVES, PLS 8475
ON OCTOBER 14, 2019
I FURTHER STATE THAT TO THE BEST OF MY KNOWLEDGE ALL PROVISIONS OF APPLICABLE LOCAL ORDINANCES HAVE BEEN COMPLIED WITH.

Dylan M. Gonsalves
DYLAN M. GONSALVES
DATE: 10-25-2019



DMG ENGINEERING, Inc.
30 OAKVUE COURT
PLEASANT HILL, CA 94523
PHONE: (925) 787-0463
FAX: (925) 287-8503

DMG ENGINEERING, Inc.
RESTRICTED ENGINEERING DRAWINGS
The information, plans, designs, notes and arrangements shown on this drawing are confidential and may not be reproduced in whole or in part without the expressed written permission of DMG ENGINEERING, Inc. Drawings noted as Preliminary/schematic and/or concept contain information that is conceptual subject to verification and/or change. The engineer makes no claim for accuracy of conceptual information or of information supplied by others.

NO.	DATE	REVISIONS	DESCRIPTION	BY

TOPOGRAPHIC AND BOUNDARY SURVEY
DOLTON AVENUE
CITY OF SAN CARLOS - CALIFORNIA
SCALE: 1 INCH = 10 FEET
OCTOBER 2019

SHEET 1
OF 1 SHEETS
ORIG.DWG: 10-25-2019
REV.DWG:
JOB: 19-126