

# San Mateo County

## Off-leash Dog Pilot Program Data Summary:

Monitoring Period 8 (November 2022 – December 2022)

### *Pilot Program Data Collection*

**Due to a data malfunction in the Department’s mapping system, data collected for this monitoring period does not include quantity of dog waste observed; recorded observations for harassment of wildlife, dog entry to sensitive areas, dogs traveling off-trail, leash compliance for on-leash trails, and interactions with dogs and visitors was properly captured and is documented in this report.**

**Table 1.** Overall Dog Monitoring Results at Quarry Park as measured for November 2022 and December 2022.

	Standards	Quarry Park
Presence of dog waste <sup>1</sup>	No more than 20 occurrences in one month	N/A <sup>2</sup>
Harassment of wildlife	Dogs observed chasing or harassing wildlife two times over a 60-day period	0 instances
Dog entry to sensitive areas	No dogs observed entering Parks defined and signed sensitive areas	0 instances
Dogs traveling off-trail	Dogs observed traveling at 10 feet or more off trail	1 instance
Leash compliance for on-leash trails <sup>3</sup>	70% of parties with dogs will have their dogs on a leash when using an on-leash trail	50% leash compliance <sup>4</sup>
Interactions with dogs and visitors	Any dog is observed exhibiting unwelcome behavior(s) to other dogs or visitors 10 times per month	1 instance

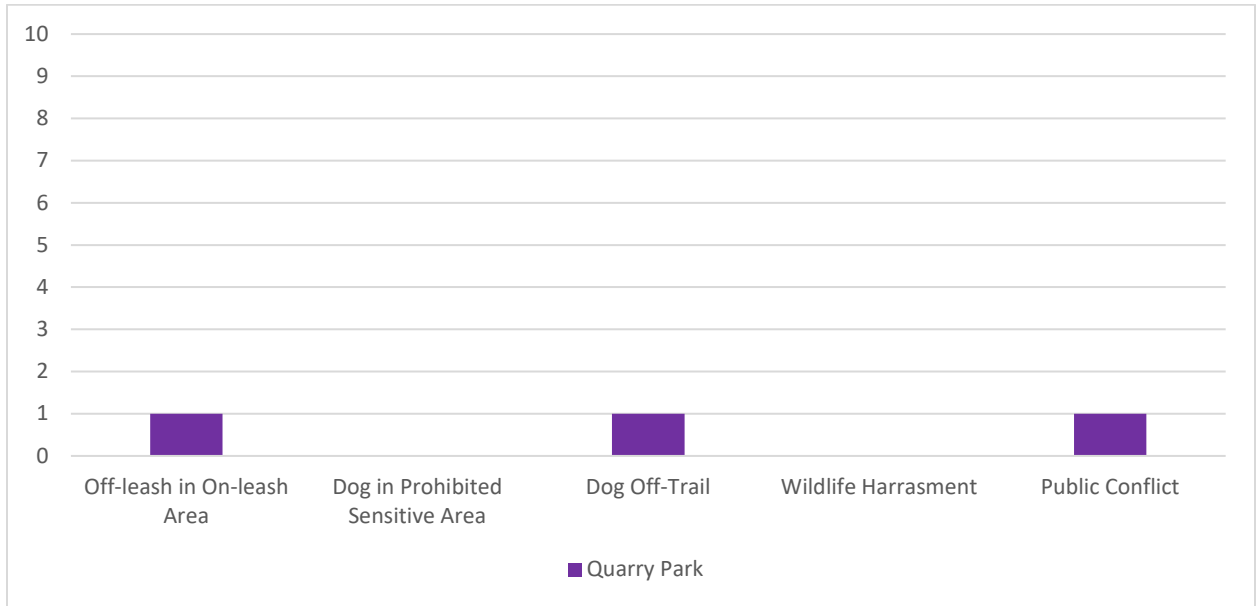
<sup>1</sup> “Per month” data for this row was calculated by averaging the total observations for each month indicated in table 2.

<sup>2</sup> Due to a program malfunction, dog waste observation data was lost for this monitoring period.

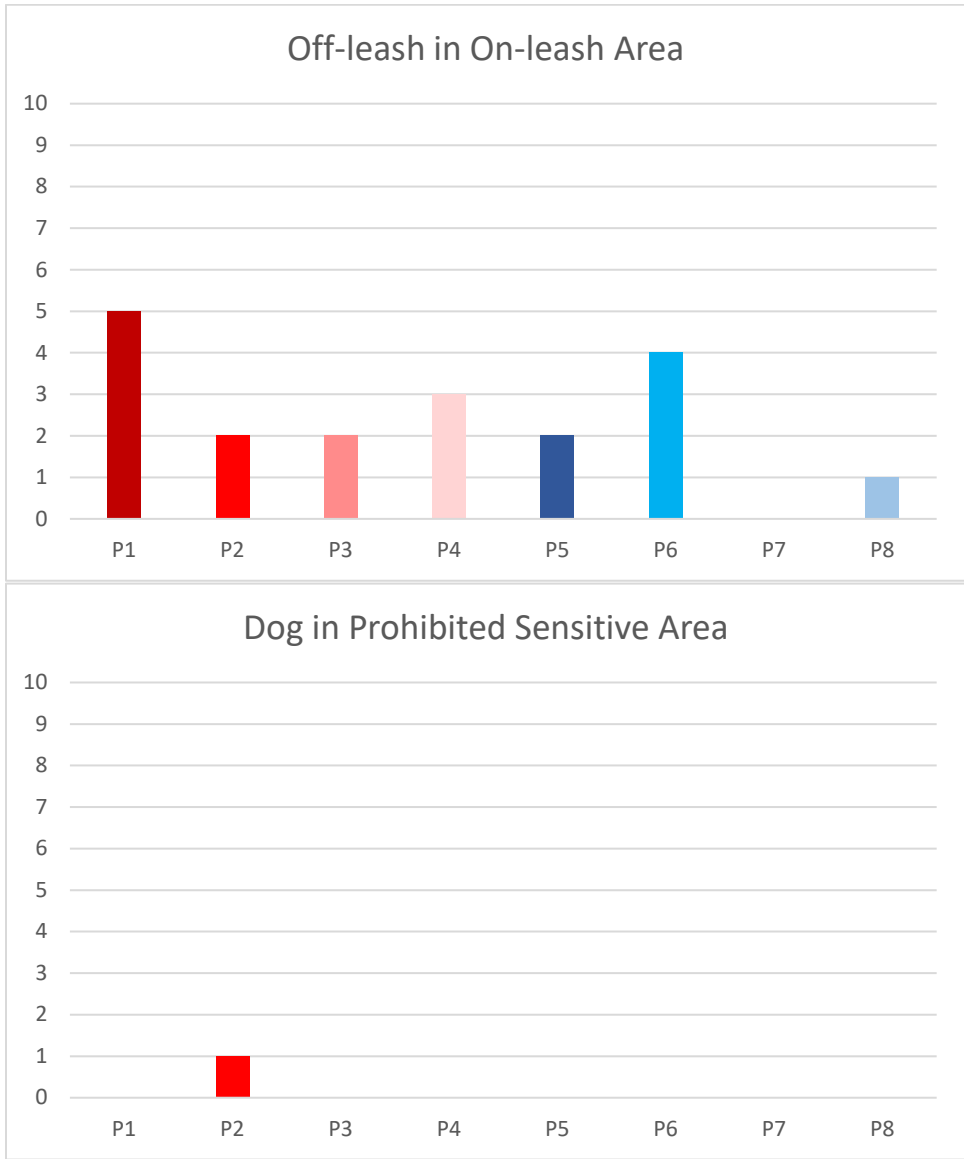
<sup>3</sup> Leash compliance data was calculated as the average percentage of “on-leash dogs in on-leash trails” out of “all dogs in on-leash trails” for the monitoring period.

<sup>4</sup> 50% leash compliance based off two observations of dogs on on-leash trails. In one instance the dog was on leash and in the other the dog was off leash.

**Graph 1.** Dog Monitoring Results (excluding “Presence of Dog Waste”) at Quarry Park as measured for November 2022 and December 2022.

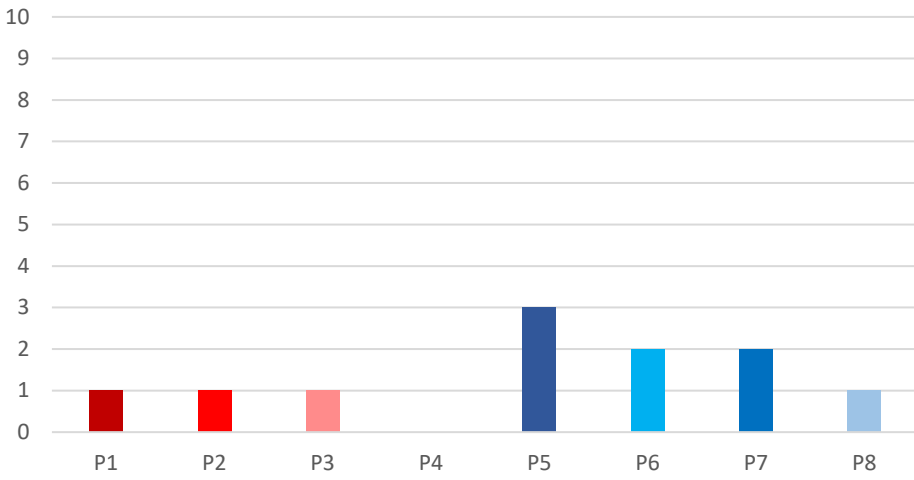


**Graphs 2a-d.** Change in Dog Monitoring Results (excluding “Presence of Dog Waste”) at Quarry Park throughout all monitoring periods<sup>5</sup>.

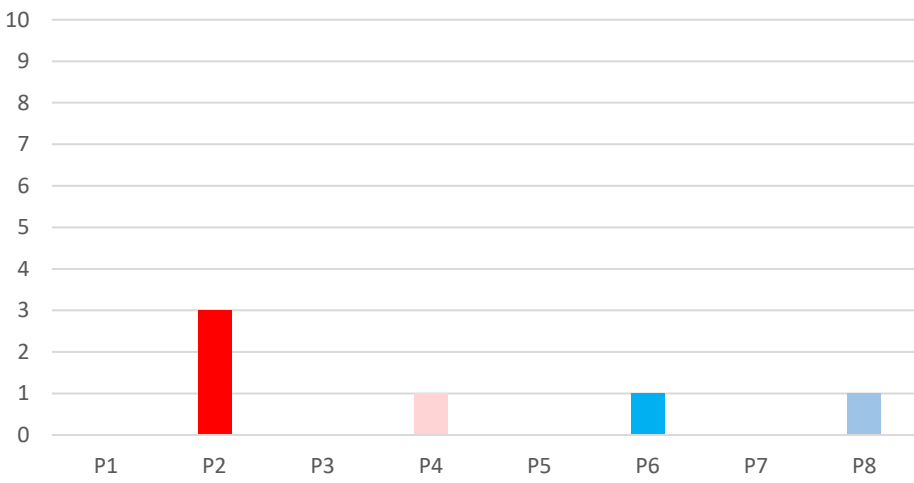


<sup>5</sup> “Wildlife harassment” is also excluded, due to there being no observed instances for any of the monitoring periods.

### Dog Off-Trail



### Public Conflict



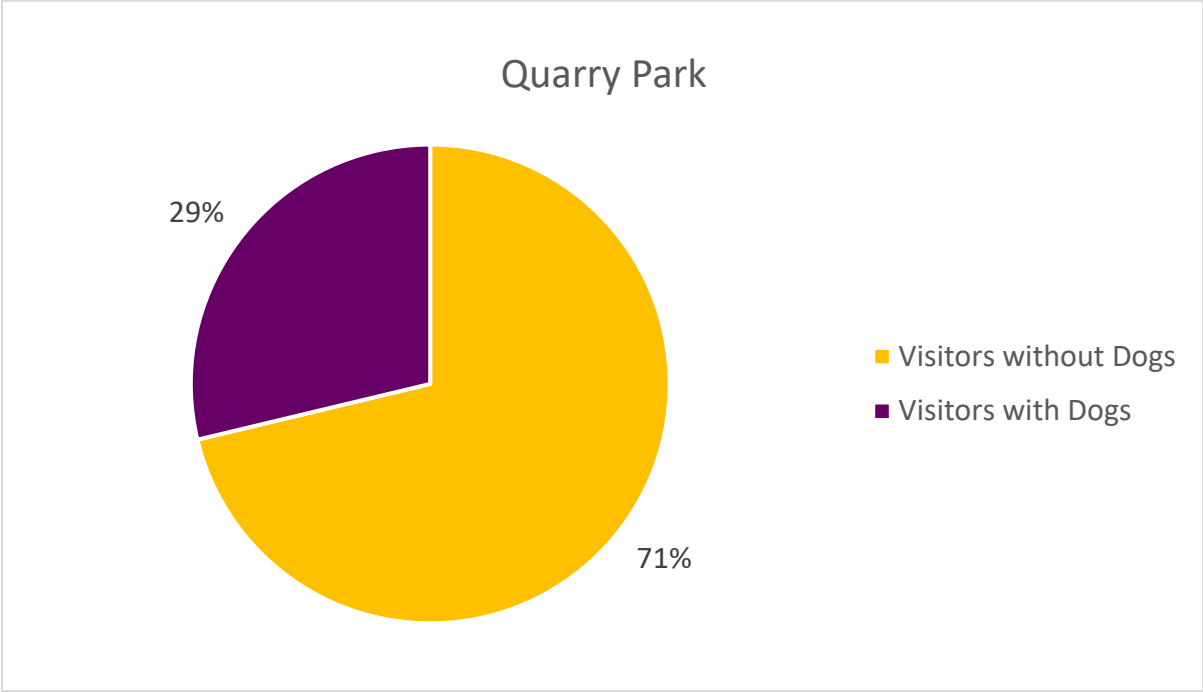
**Table 3.** Visitor Demographics at Quarry Park as measured for November 2022 and December 2022.

	Quarry Park	
Total visitors overall	588	
	Total	% of visitors overall
Visitors without dogs	419	71.3%
Visitors with dogs	169	28.7%

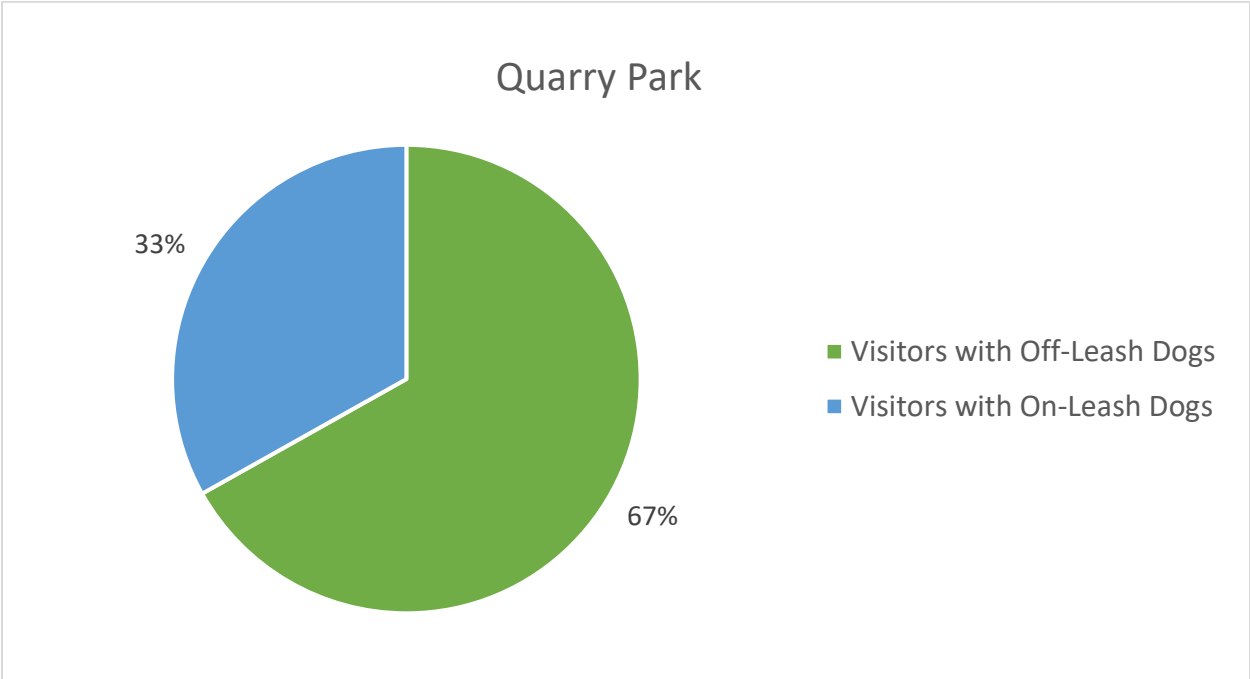
**Table 4.** Demographics of Visitors with Dogs at Quarry Park as measured for November 2022 and December 2022.

	Quarry Park	
Total visitors with dogs	169	
	Total	% of visitors with dogs
Visitors with off-leash dogs	113	66.9%
Visitors with on-leash dogs	56	33.1%

**Graph 4.** Percentage of Visitors with or without Dogs out of Total Visitors at Quarry Park as measured for November 2022 and December 2022.



**Graph 5.** Percentage of Visitors with Off-Leash or On-Leash Dogs out of Visitors with Dogs at Quarry Park as measured for November 2022 and December 2022.



## **I. Summary of Results**

Due to a data malfunction in the Department's mapping system, data collected for this monitoring period does not include quantity of dog waste observed; recorded observations for harassment of wildlife, dog entry to sensitive areas, dogs traveling off-trail, leash compliance for on-leash trails, and interactions with dogs and visitors was properly captured and is documented in this report.

All criteria standards for Monitoring Period 8 were met, except for leash compliance. Compared to Monitoring Period 7, leash compliance decreased from 100% to 50%. Twice dogs were observed on on-leash trails during Monitoring Period 8. One owner was compliant and had their dog on-leash while the other time they did not. Therefore, the standard of 70% leash compliance was not achieved for this monitoring period. Instances of dogs traveling off-trail decreased from two instances to one instance. Harassment of wildlife and entry into prohibited sensitive areas both remained at zero, while public conflicts increased from zero instances to one instance.

In terms of visitor demographics, Quarry Park had 588 observed visitors for Monitoring Period 8, with 71.3% visiting without dogs and 28.7% of its total visitors bringing dogs. Nearly 67% of visitors with dogs at Quarry Park let their dogs off-leash, while 33% kept them on-leash. In comparison to the previous monitoring period, the proportion of visitors without dogs to visitors with dogs decreased from 73% of all visitors to 71.3%. There was also a decrease in both visitors with off-leash dogs and visitors with on-leash dogs, and the ratio between the two shifted from 64% off-leash and 36% on-leash in Monitoring Period 7 to 66.9% off-leash and 33.1% on-leash in Monitoring Period 8.

## **II. Courses of Action**

Due to a data malfunction in the Department's mapping system, there are no courses of action proposed for this monitoring period. The below actions that have been taken for prior monitoring periods still remain in place. Future courses of action will be determined based of observations made in subsequent monitoring periods through the remainder of the 12-month Pilot Program.

In accordance with the Off-leash Dog Recreation Pilot Program's IS/MND, the Department has posted the following sign in Quarry Park:



# Quarry Park Off-Leash Dog Pilot is Underway!

San Mateo County Parks is conducting a one-year pilot program to explore allowing dogs and their owners to enjoy off-leash use of most trails in Quarry Park.

## Not Disposing of Dog Waste Can Impact Off-Leash Pilot Success

For two consecutive monitoring periods the amount of dog waste left on trails has exceeded the pilot standard. For the pilot to succeed and for off-leash recreation to continue, dog waste must be picked up, bagged, and disposed of in a trash can.

Also remember:

- Keep dogs on trails and out of sensitive habitat.
- Keep dogs on leash in the parking lot and on-leash trails; dogs are not allowed in the playground or pump track area.
- Keep dogs within 25' and under voice/sight control.

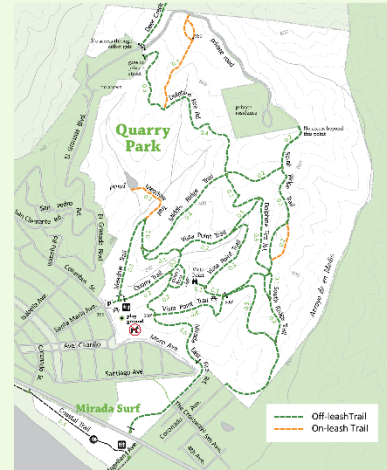
Let's all work together to keep off-leash dog recreation in the park!



**Learn more about the Pilot Program**

<https://www.smcgov.org/parks/leash-dog-pilot-program-quarry-park>

## Leash Your Dog in Designated Areas



Look for signs:



Off-leash dogs OK



Dogs on leash OK



No dogs

The Department has also installed two additional dog waste stations at Mirada Surf East.

As there have been two monitoring periods during the pilot program where dog waste observed exceeds the standard that was set, the Department will continue monitoring, but will need to re-evaluate the standards set and adjust management options accordingly. The figure below is included in the adaptive management plan for the off-leash dog recreation pilot, identifying the decision-making that the Department will need to make regarding the pilot and appropriate management



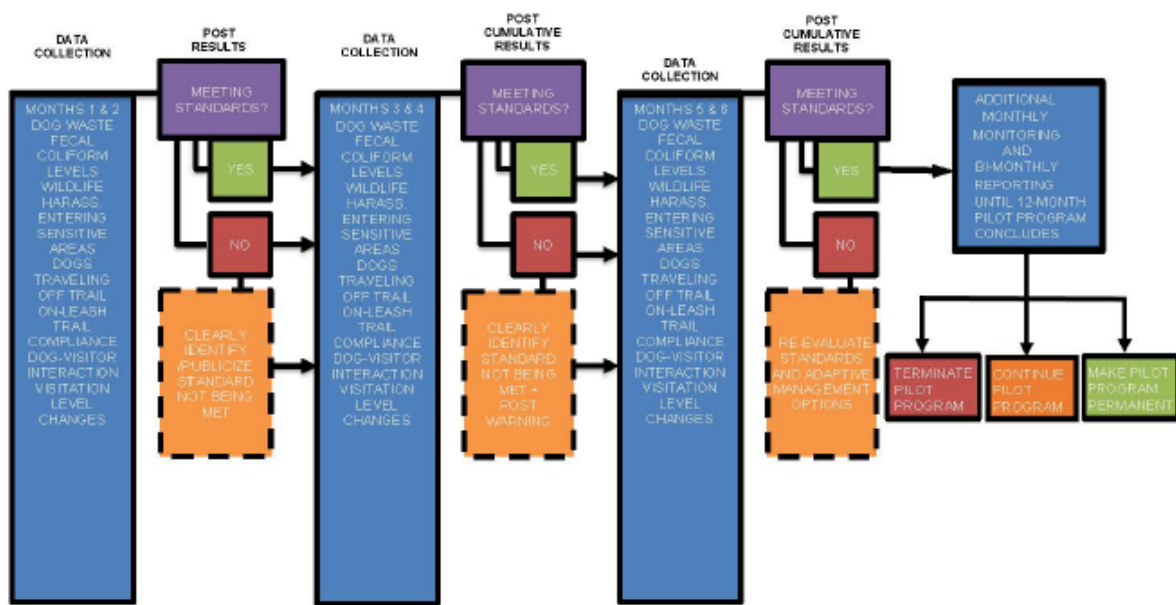


Figure 4. Adaptive Management Decision Flow Chart