



Arborist Report

Cypress Point
Moss Beach, CA

PREPARED FOR:
MidPen Housing
303 Vintage Park Drive, Suite 250
Foster City, CA 94404

PREPARED BY:
HortScience | Bartlett Consulting
325 Ray Street
Pleasanton, CA 94566

July 1, 2022



HORT SCIENCE

BARTLETT CONSULTING
Divisions of The F.A. Bartlett Tree Expert Company

Arborist Report

Cypress Point
Moss Beach, CA

Table of Contents

	Page
Executive Summary	1
Introduction and Overview	2
Tree Assessment Methods	2
Description of Trees	3
San Mateo County Tree Protection Requirements	4
Suitability for Preservation	5
Evaluation of Impacts and Recommendations	6
Tree Preservation Guidelines	7

List of Tables

Table 1. Condition ratings and frequency of occurrence of trees	3
Table 2. Tree suitability for preservation	6

Exhibits

Tree Assessment

Tree Assessment Plan

Tree Disposition

Arborist Report

Cypress Point Moss Beach, CA

Executive Summary

MidPen Housing is planning to develop Cypress Point in Moss Beach, CA. HortScience | Bartlett Consulting was asked to prepare an Arborist Report for the trees potentially impacted by the project.

Trees were assessed on April 18, 28 and May 5, 2022. Four hundred eighty-eight (488) trees were assessed, representing four species. Overall, nearly half of the trees were in poor condition (47%), and only 14% of trees were in good condition.

The site was a relatively flat area with several old building foundations, grassy and shrubby areas, and areas of dense trees typical of coastal California. The northern half of the site sloped downward to 16th Street. Tree diversity was very low with two species making up 99% of the trees. Three Italian stone pines in good condition and one myoporum in fair condition were mixed into the landscape dominated by Monterey cypress and Monterey pine.

Each tree was rated for suitability for preservation based upon its age, health, structural condition, and ability to safely coexist within a development environment. We consider trees with high suitability for preservation to be the best candidates for preservation. We do not normally recommend retention of trees with low suitability for preservation in areas where people or property will be present. Retention of trees with moderate suitability for preservation depends upon the intensity of proposed site changes.

Based on my review of the plan, I have listed whether individual trees will be removed or can be preserved in the **Tree Disposition** exhibit. Overall:

- 295 trees will be removed (190 *Significant*)
- 193 trees can be preserved (158 *Significant*)

The goal of tree preservation is not merely tree survival during development but maintenance of tree health and beauty for many years. Trees retained on sites that are either subject to extensive injury during construction or are inadequately maintained become a liability rather than an asset. The response of individual trees depends on the amount of excavation and grading, care with which demolition is undertaken, and construction methods.

A **TREE PROTECTION ZONE** shall be identified for each tree to be preserved on the Tree Protection Plan. No grading, excavation, construction or storage or dumping of materials shall occur within the **Tree Protection Zone**.

Introduction and Overview

MidPen Housing is planning to develop Cypress Point in Moss Beach, CA. HortScience | Bartlett Consulting (Divisions of The F. A. Bartlett Tree Expert Co.) was asked to prepare an **Arborist Report** for the trees potentially impacted by the project as required by Section 12 of Part Three of Division VIII of the San Mateo County Ordinance Code.

This report provides the following information:

1. An assessment of the health and structural condition of the trees within the proposed project area based on a visual inspection from the ground.
2. An evaluation of the impacts to trees based on site plans provided by the client.
3. Guidelines for tree preservation during the design, construction, and maintenance phases of development.

Tree Assessment Methods

Trees were assessed on April 18, 28 and May 5, 2022. The assessment included all trees with a trunk diameter of 6" or larger within the project boundary. The assessment procedure consisted of the following steps:

1. Identifying the tree species.
2. Tagging each tree with an identifying number and recording its location on a map.
3. Measuring the trunk diameter at a point 54 inches above grade.
4. Evaluating the health and structural condition using a scale of 1 – 5:
 - 5 - A healthy, vigorous tree, reasonably free of signs and symptoms of disease, with good structure and form typical of the species.
 - 4 - Tree with slight decline in vigor, small amount of twig dieback, minor structural defects that could be corrected.
 - 3 - Tree with moderate vigor, moderate twig and small branch dieback, thinning of crown, poor leaf color, moderate structural defects that might be mitigated with regular care.
 - 2 - Tree in decline, epicormic growth, extensive dieback of medium to large branches, significant structural defects that cannot be abated.
 - 1 - Tree in severe decline, dieback of scaffold branches and/or trunk; most of foliage from epicormics; extensive structural defects that cannot be abated.
5. Rating the suitability for preservation as "high", "moderate" or "low". Suitability for preservation considers the health, age and structural condition of the tree, and its potential to remain an asset to the site for years to come.

High: Trees with good health and structural stability that have the potential for longevity at the site.

Moderate: Trees with somewhat declining health and/or structural defects than can be abated with treatment. The tree will require more intense management and monitoring and may have shorter life span than those in 'good' category.

Low: Trees in poor health or with significant structural defects that cannot be mitigated. Tree is expected to continue to decline, regardless of treatment. The species or individual may have characteristics that are undesirable for landscapes, and generally are unsuited for use areas.

Description of Trees

Four hundred eighty-eight (488) trees were assessed, representing four species (Table 1). Overall, nearly half of the trees were in poor condition (47%), and only 14% of trees were in good condition. Descriptions of each tree are found in the **Tree Assessment** and approximate locations are shown on the **Tree Assessment Map** (see Exhibits).

**Table 1: Condition ratings and frequency of occurrence of trees
Cypress Point, Moss Beach, CA**

Common Name	Scientific Name	Condition				Total
		Dead (0)	Poor (1-2)	Fair (3)	Good (4-5)	
Monterey cypress	<i>Hesperocyparis macrocarpa</i>	8	68	71	34	181
Myoporum	<i>Myoporum laetum</i>	-	-	1	-	1
Italian stone pine	<i>Pinus pinea</i>	-	-	-	3	3
Monterey pine	<i>Pinus radiata</i>	3	161	107	32	303
Total		11	229	179	69	488

The site was a relatively flat area with several old building foundations, grassy and shrubby areas, and areas of dense trees typical of coastal California (Photo 1). The northern half of the site sloped downward to 16th Street. Tree diversity was very low with two species making up 99% of the trees. Three Italian stone pines in good condition and one myoporum in fair condition were mixed into the landscape dominated by Monterey cypress and Monterey pine.



Photo 1. The site was relatively flat with areas of dense trees and areas of shrubs, grass, and old building foundations.

Monterey pine was the most common species with 303 trees (62% of the population). As is typical throughout the San Francisco Bay Area, the pines were in poor condition (53%) with

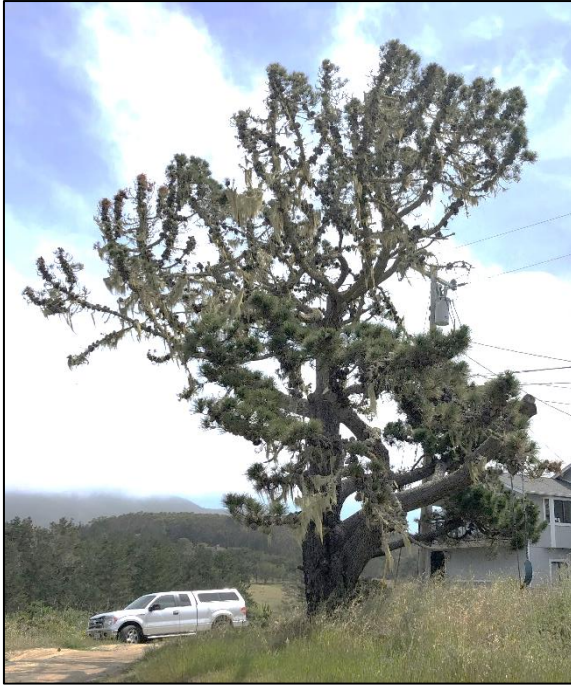


Photo 2. Monterey pine #376 was one of the largest trees assessed (45-inch trunk diameter) and one of the least healthy.



Photo 3. Monterey cypress #485 was in good condition with trunk diameters of 26, 25, 22, and 13 inches.

35% in fair condition and only 11% in good condition. The pines ranged from young trees (6-inch trunk diameter) to old (45" trunk diameter). Of the 259 single stemmed Monterey pines included in the assessment, the average trunk diameter was 15 inches. For example,

Monterey pine #376 was one of the largest pines (45" trunk diameter), and it was in poor condition with over half of the crown dead (Photo 2).

Monterey cypress was the other common species with 181 trees (37% of the population). The cypress were in fair (71 trees) to poor (68 trees) condition with 34 trees in good condition. The Monterey cypress were larger than the pines; the average trunk diameter of the single stemmed cypresses was 24 inches including tree #309 (68 inches). But this likely underestimates the size of the cypresses because many of the largest trees were multi-trunked trees. For example, tree #485 was in good condition and had four trunks (26, 25, 22, and 13 inches; Photo 3).

San Mateo County Tree Protection Requirements

Section 12 of Part Three of Division VII of the San Mateo County Ordinance Code defines *Significant Trees* as having a trunk circumference of 38 inches or greater (12 inch diameter). Based on this definition, 348 trees are considered *Significant*. *Significant Trees* along with Heritage Trees and trees growing within the Public right-of-way cannot be removed except with a permit. There do not appear to be any Heritage or Public trees, however, *Significant Trees* are identified in the ***Tree Assessment*** (see Exhibits).

Suitability for Preservation

Before evaluating the impacts that will occur during development, it is important to consider the quality of the tree resource itself, and the potential for individual trees to function well over an extended length of time. Trees that are preserved on development sites must be carefully selected to make sure that they may survive development impacts, adapt to a new environment and perform well in the landscape.

Our goal is to identify trees that have the potential for long-term health, structural stability, and longevity. For trees growing in open fields, away from areas where people and property are present, structural defects and/or poor health present a low risk of damage or injury if they fail.

We must be concerned, however, about safety in use areas. Therefore, where development encroaches into existing plantings, we must consider their structural stability as well as their potential to grow and thrive in a new environment. Where development will not occur, the normal life cycles of decline, structural failure, and death should be allowed to continue.

Evaluation of suitability for preservation considers several factors:

- **Tree health**
Healthy, vigorous trees are better able to tolerate impacts such as root injury, demolition of existing structures, changes in soil grade and moisture, and soil compaction than non-vigorous trees are. Monterey pine #376 was mostly dead and would be unlikely to recover from significant root injury.
- **Structural integrity**
Trees with significant amounts of wood decay and other structural defects that cannot be corrected are more likely to fail. Such trees should not be preserved in areas where damage to people or property is likely. For example, Monterey cypress #249 had multiple trunks arising from the base, some of which had failed. These poorly attached trunks will likely continue to fail, and this tree should not be preserved.
- **Species response**
There is a wide variation in the response of individual species to construction impacts and changes in the environment. For example, Monterey pines are less tolerant of root loss than Monterey cypress.
- **Tree age and longevity**
Old trees, while having significant emotional and aesthetic appeal, have limited physiological capacity to adjust to an altered environment. Young trees are better able to generate new tissue and respond to change.
- **Invasiveness**
Species which spread across a site and displace desired vegetation are not always appropriate for retention. This is particularly true when indigenous species are displaced. The California Invasive Plant Inventory Database (<https://www.cal-ipc.org/plants/inventory/>) lists species identified as being invasive. Myoporum is moderately invasive.

Each tree was rated for suitability for preservation based upon its age, health, structural condition, and ability to safely coexist within a development environment (See **Tree Assessments** in Exhibits, and Table 2). We consider trees with high suitability for preservation to be the best candidates for preservation. We do not normally recommend

retention of trees with low suitability for preservation in areas where people or property will be present. Retention of trees with moderate suitability for preservation depends upon the intensity of proposed site changes.

**Table 2: Tree suitability for preservation.
Cypress Point, Moss Beach, CA**

High	Trees in good health and with structural stability that have the potential for longevity at the site. Twenty-six (26) trees on the site had a high suitability for preservation.
Moderate	Trees in fair health and/or with structural defects that may be abated with treatment. Trees in this category require more intense management and monitoring and may have shorter lifespans than those in the “high” category. One hundred seven (107) trees had moderate suitability for preservation.
Low	Trees in poor health or with significant defects in structure that cannot be abated with treatment. These trees can be expected to decline regardless of management. The species or individual tree may possess either characteristics that are undesirable in landscape settings or be unsuited for use areas. Three hundred forty-four (344) trees had lower suitability for preservation.

Evaluations of Impacts and Recommendations

Appropriate tree retention develops a practical match between the location and intensity of construction activities with the quality and health of trees. The **Tree Assessment** was the reference point for tree condition and quality. To evaluate impacts from the project, I reviewed the *Tree Protection and Removal Plan* created by PYATOK dated June 21, 2022. This plan showed the locations of all the trees near construction and the limit of grading.

Based on my review of the plan, I have listed whether individual trees will be removed or can be preserved in the **Tree Disposition** exhibit. Overall:

- 295 trees will be removed (190 *Significant*)
- 193 trees can be preserved (158 *Significant*)

Dense development is planned in the center of the project area. Demolition, grading, construction and landscaping will likely require the removal of all trees in this area. All trees shown within the limits of grading will be removed. It is also important to assess the impacts to trees just outside of the limits of grading. Of the 61 trees within 30 feet grading, 40 will be removed. Included on this list of removals are healthy trees like Monterey cypress #366 that are too close to grading (~3 feet) to survive the root loss and trees that are relatively far from grading like Monterey pine #394 (~19 feet) but are in poor condition.

Most of the trees that can be preserved on the site (172 trees) are more than 30 feet from the planned grading. An additional 21 trees will likely have their roots impacted by grading but are far enough away and healthy enough to hopefully tolerate that level of root loss. Of the listed to be preserved, 11 dead trees and 83 trees in poor condition are included. If these

areas are going to be managed as semi-natural areas, that may be appropriate. If these areas are going to be re-imagined, or heavily used, this should be re-evaluated. Successful preservation of trees to be preserved will require adherence to the **Tree Preservation Guidelines**.

Tree Preservation Guidelines

The goal of tree preservation is not merely tree survival during development but maintenance of tree health and beauty for many years. Trees retained on sites that are either subject to extensive injury during construction or are inadequately maintained become a liability rather than an asset. The response of individual trees depends on the amount of excavation and grading, care with which demolition is undertaken, and construction methods. Coordinating any construction activity inside the **TREE PROTECTION ZONE** can minimize these impacts. The following recommendations will help reduce impacts to trees from development and maintain and improve their health and vitality through the clearing, grading and construction phases.

Tree Protection Zone

1. **A TREE PROTECTION ZONE** shall be identified for each tree to be preserved on the Tree Protection Plan. The **TREE PROTECTION ZONE** will be just outside of the limit of grading within approximately 30 feet of any trees being preserved.
 - a. Fence all trees to be retained to completely enclose the **TREE PROTECTION ZONE** prior to demolition, grubbing or grading. Fences shall be 6 ft. chain link with posts sunk into the ground or equivalent as approved by the County.
 - b. Fences must be installed prior to beginning demolition and must remain until construction is complete.
 - c. No grading, excavation, construction or storage or dumping of materials shall occur within the **TREE PROTECTION ZONE**.

Design recommendations

1. Plans affecting the trees should be reviewed by the consulting arborist with regard to tree impacts. These include, but are not limited to, site plans, improvement plans, utility and drainage plans, grading plans, landscape and irrigation plans, and demolition plans.
2. Plan for tree preservation by designing adequate space around trees to be preserved. This is the **TREE PROTECTION ZONE**: No grading, excavation, construction or storage of materials should occur within that zone. Route underground services including utilities, sub-drains, water or sewer around the **TREE PROTECTION ZONE**. For design purposes, the **TREE PROTECTION ZONE** trees shall be defined as the tree dripline.
3. **Tree Preservation Guidelines** prepared by the Consulting Arborist, which include specifications for tree protection during demolition and construction, should be included on all plans.
4. Any herbicides placed under paving materials must be safe for use around trees and labeled for that use.
5. Do not lime the subsoil within 50' of any tree. Lime is toxic to tree roots.
6. As trees withdraw water from the soil, expansive soils may shrink within the root area. Therefore, foundations, footings and pavements on expansive soils near trees should be designed to withstand differential displacement.
7. Ensure adequate but not excessive water is supplied to trees; in most cases occasional irrigation will be required. Avoid directing runoff toward trees.

Pre-demolition and pre-construction treatments and recommendations

1. The demolition and construction superintendents shall meet with the Consulting Arborist before beginning work to review all work procedures, access routes, storage areas, and tree protection measures.
2. Fence all trees to be retained to completely enclose the **TREE PROTECTION ZONE** prior to demolition, grubbing or grading. Fences shall be 6 ft. chain link with posts sunk into the ground or equivalent as approved by the City.
3. Fences are to remain until all grading and construction is completed. Where demolition must occur close to trees, such as removing curb and pavement, install trunk protection devices such as winding silt sock wattling around trunks or stacking hay bales around tree trunks.
4. Trees to be removed shall be felled so as to fall away from **TREE PROTECTION ZONE** and avoid pulling and breaking of roots of trees to remain. If roots are entwined, the Consulting Arborist may require first severing the major woody root mass before extracting the trees, or grinding the stump below ground.
5. All tree work shall comply with the Migratory Bird Treaty Act as well as California Fish and Wildlife code 3503-3513 to not disturb nesting birds. To the extent feasible tree pruning and removal should be scheduled outside of the breeding season. Breeding bird surveys should be conducted prior to tree work. Qualified biologists should be involved in establishing work buffers for active nests.

Recommendations for tree protection during construction

1. All contractors shall conduct operations in a manner that will prevent damage to trees to be preserved.
2. If roots 2" and greater in diameter are encountered during site work and must be cut to complete the construction, the Consulting Arborist must be consulted to evaluate effects on the health and stability of the tree and recommend treatment.
3. Any brush clearing required within the **TREE PROTECTION ZONE** shall be accomplished with hand-operated equipment.
4. Spoil from trench, footing, utility or other excavation shall not be placed within the **TREE PROTECTION ZONE**, neither temporarily nor permanently.
5. All grading within the dripline of trees shall be done using the smallest equipment possible. The equipment shall operate perpendicular to the tree and operate from outside the **TREE PROTECTION ZONE**. Any modifications must be approved and monitored by the Consulting Arborist.
6. If injury should occur to any tree during construction, it should be evaluated as soon as possible by the Consulting Arborist so that appropriate treatments can be applied.
7. No excess soil, chemicals, debris, equipment or other materials shall be dumped or stored within the **TREE PROTECTION ZONE**.
8. Any additional tree pruning needed for clearance during construction must be performed by a Certified Arborist and not by construction personnel.

Maintenance of impacted trees

Preserved trees will experience a physical environment different from that pre-development. As a result, tree health and structural stability should be monitored. Occasional pruning, fertilization, mulch, pest management, replanting and irrigation may be required. In addition,

provisions for monitoring both tree health and structural stability following construction must be made a priority. Inspect trees annually and following major storms to identify conditions requiring treatment to manage risk associated with tree failure.

Our procedures included assessing trees for observable defects in structure. This is not to say that trees without significant defects will not fail. Failure of apparently defect-free trees does occur, especially during storm events. Wind forces, for example, can exceed the strength of defect-free wood causing branches and trunks to break. Wind forces coupled with rain can saturate soils, reducing their ability to hold roots, and blow over defect-free trees. Although we cannot predict all failures, identifying those trees with observable defects is a critical component of enhancing public safety.

Furthermore, trees change over time. Our inspections represent the condition of the tree at the time of inspection. As trees age, the likelihood of failure of branches or entire trees increases. Annual tree inspections are recommended to identify changes to tree health and structure. In addition, trees should be inspected after storms of unusual severity to evaluate damage and structural changes. Initiating these inspections is the responsibility of the client and/or tree owner.

If you have any questions about my observations or recommendations, please contact me.

HortScience | Bartlett Consulting



Darya Barar, Managing Consulting Urban Forester
ISA Certified Arborist No. WE-6757A
Registered Consulting Arborist #693
ISA Tree Risk Assessment Qualified



Exhibits

Tree Assessment

Tree Assessment Plan

Tree Disposition



Tree Assessment

Cypress Point
Moss Beach, CA
May 2022



Tree No.	Species	Trunk Diameter (in.)	Protected Tree?	Condition 1=poor 5=excellent	Suitability for Preservation	Comments
1	Monterey pine	19	Significant	3	Low	One sided south; slight lean south; top of bank sloping south.
2	Monterey cypress	23,13	Significant	1	Low	Codominant stems arise from base; failing at the base; topped for line clearance; 13" stem decay at base.
3	Monterey cypress	22	Significant	2	Low	Leaning west; mounding at base on opposite side of lean; one sided west; twig and branch dieback.
4	Monterey cypress	21	Significant	2	Low	Topped; leaning west; mounding at base on opposite side of lean; one sided west; twig and branch dieback.
5	Monterey cypress	25,10,6	Significant	2	Low	Multiple trunks arise from 1'; thin crown; twig and branch dieback; topped.
6	Monterey cypress	18	Significant	2	Low	Topped; leaning west; mounding at base on opposite side of lean; one sided west; twig and branch dieback.
7	Monterey cypress	18	Significant	2	Low	Leans west; twig and branch dieback; fussed stems.
8	Monterey pine	15	Significant	1	Low	Dead; history of branch failure.
9	Monterey cypress	26	Significant	3	Low	Upright form and structure; one sided northwest; twig and branch dieback.
10	Monterey cypress	16	Significant	1	Low	Upright form and structure; topped; little live foliage.
11	Monterey pine	8,6	No	1	Low	Codominant trunks arise from 2'; topped; little live foliage.
12	Monterey pine	10	No	1	Low	Topped; little live foliage.
13	Monterey pine	7	No	1	Low	Topped; little live foliage.
14	Monterey cypress	15	Significant	2	Low	Leans west; history of branch failure; at 15' trunk turns horizontal.
15	Monterey cypress	15	Significant	2	Low	Topped; leaning west; one sided west; twig and branch dieback.
16	Monterey cypress	12,12	Significant	1	Low	Multiple trunks arise from base; partially failed at the base; leaning west; twig and branch dieback.
17	Monterey cypress	36	Significant	2	Low	Toped; one sided west; leaning west; history of branch failure; branching to the ground.

Tree Assessment

Cypress Point
Moss Beach, CA
May 2022



Tree No.	Species	Trunk Diameter (in.)	Protected Tree?	Condition 1=poor 5=excellent	Suitability for Preservation	Comments
18	Monterey pine	7	No	0	-	Dead; failed.
19	Monterey pine	16	Significant	1	Low	Topped; growth only at top; history of branch failure; twig and branch dieback.
20	Monterey cypress	17	Significant	1	Low	Leans east; central leader is dead; history of branch failure; little live foliage.
21	Monterey cypress	36,27	Significant	3	Moderate	Codominant trunks arise from 2.5'; high live crown ratio; seam in main attachment; twig and branch dieback.
22	Monterey cypress	33	Significant	3	Moderate	High live crown ratio; slight lean east; twig and branch dieback.
23	Monterey cypress	24	Significant	3	Low	High live crown ratio; foliage bows north high in crown; twig and branch dieback.
24	Monterey cypress	29,8	Significant	3	Moderate	8" stem is dead; high live crown ratio; one sided west; twig and branch dieback.
25	Monterey cypress	23	Significant	2	Low	Leans west; topped; twig and branch dieback.
26	Monterey cypress	44	Significant	2	Low	Multiple trunks arise from 10&15'; topped on west side; thin crown; twig and branch dieback.
27	Monterey cypress	21	Significant	2	Low	Trunk sweeps north; high crown; twig and branch dieback.
28	Monterey cypress	14	Significant	0	-	Dead.
29	Monterey cypress	18,5,4,4,3	Significant	1	Low	High sparse crown; upper crown bows northwest; small stems dead; twig and branch dieback.
30	Monterey cypress	23	Significant	2	Low	Upright form; high crown.
31	Monterey cypress	36,26	Significant	2	Low	Multiple stems arise from 2ft; upright form; high crown; twig and branch dieback.
32	Monterey cypress	18	Significant	1	Low	Upright form; high crown; slight lean east in upper crown; one sided to east; twig and branch dieback.
33	Monterey cypress	35	Significant	2	Low	Sweep and canopy one sided to west; twig and branch dieback.
34	Monterey cypress	14	Significant	1	Low	Suppressed; high sparse crown; twig and branch dieback.

Tree Assessment

Cypress Point
Moss Beach, CA
May 2022



Tree No.	Species	Trunk Diameter (in.)	Protected Tree?	Condition 1=poor 5=excellent	Suitability for Preservation	Comments
35	Monterey pine	21	Significant	2	Low	Multiple stems at 4.5 ft; at 10 ft trunk turns horizontal; canopy one sided to west; twig and branch dieback.
36	Monterey pine	14	Significant	1	Low	Topped for utility clearance; one sided to west; twig and branch dieback.
37	Monterey pine	18	Significant	1	Low	Topped for utility clearance; one sided to west; twig and branch dieback.
38	Monterey pine	21	Significant	2	Low	Multiple stems arise at 10ft; twig and branch dieback.
39	Monterey pine	25	Significant	2	Low	Topped for utility clearance; twig and branch dieback.
40	Monterey cypress	26	Significant	2	Low	Codominant at 12ft; narrow angle attachment with seam; high crown; twig and branch dieback.
41	Monterey cypress	9	No	0	-	Dead.
42	Monterey cypress	28,14	Significant	3	Low	Codominant at 1ft; one sided to west; dead lower branches.
43	Monterey cypress	48	Significant	3	Low	One sided to west; lower branches dead; history of branch failure.
44	Monterey cypress	48	Significant	3	Low	Multiple branches at 10ft; high crown; twig and branch dieback.
45	Monterey cypress	29	Significant	2	Low	Decay column on west, high crown, twig and branch dieback.
46	Monterey cypress	25	Significant	2	Low	Upright form; high crown, twig and branch dieback.
47	Monterey cypress	27	Significant	2	Low	Upright form; high crown, twig and branch dieback.
48	Monterey cypress	29	Significant	2	Low	Upright form; high crown; one sided to north.; twig and branch dieback..
49	Monterey cypress	29	Significant	3	Low	Upright form; high crown.
50	Monterey cypress	15	Significant	0	-	Dead.
51	Monterey cypress	12	Significant	0	-	Dead.
52	Monterey cypress	32	Significant	2	Low	Cd arise at 20 ft; high sparse crown twig and branch dieback.
53	Monterey cypress	9	No	0	-	Dead.
54	Monterey cypress	36	Significant	2	Low	Cd arise at 20 ft; high sparse crown; One sided to west; Lower branches dead.

Tree Assessment

Cypress Point
Moss Beach, CA
May 2022



Tree No.	Species	Trunk Diameter (in.)	Protected Tree?	Condition 1=poor 5=excellent	Suitability for Preservation	Comments
55	Monterey cypress	28	Significant	2	Low	Sweep at base to north; High sparse crown twig and branch dieback.
56	Monterey cypress	45	Significant	3	Low	High canopy branching to ground, history of branch failure, twig and branch dieback.
57	Monterey cypress	32	Significant	2	Low	High sparse canopy; history of branch failure, twig and branch dieback.
58	Monterey cypress	13	Significant	1	Low	Little live foliage.
59	Monterey cypress	24	Significant	2	Low	Upright form; high canopy; one sided to west.
60	Monterey cypress	33	Significant	2	Low	Upright form; high canopy; twig and branch dieback.
61	Monterey cypress	33	Significant	3	Moderate	Upright form; high canopy; twig and branch dieback.
62	Monterey cypress	14,12	Significant	0	-	Dead.
63	Monterey cypress	11	No	0	-	Dead.
64	Monterey cypress	8	No	0	-	Dead.
65	Monterey cypress	12	Significant	1	Low	Upright form; Little live foliage.
66	Monterey pine	11	No	2	Low	Lean and one sided to west; Twig and branch dieback.
67	Monterey cypress	34	Significant	4	Moderate	Good form and structure; dead lower branches.
68	Monterey cypress	11	No	2	Low	Suppressed form.
69	Monterey pine	13	Significant	0	-	Dead.
70	Monterey pine	18	Significant	0	-	Dead, 18 ft stub.
71	Monterey pine	15,13	Significant	2	Low	Topped for utility clearance, codominant arising at 1ft; One sided to west; Twig and branch dieback.
72	Monterey pine	25	Significant	1	Low	Topped for utility clearance, little live foliage.
73	Monterey pine	23,13	Significant	1	Low	Codominant arising at 2ft; little live foliage, history of branch failure.
74	Monterey pine	31,16	Significant	1	Low	One stem lays on ground to west, all but dead.
75	Monterey pine	17	Significant	1	Low	All but dead.

Tree Assessment

Cypress Point
Moss Beach, CA
May 2022



Tree No.	Species	Trunk Diameter (in.)	Protected Tree?	Condition 1=poor 5=excellent	Suitability for Preservation	Comments
76	Monterey pine	28,18,10,6	Significant	2	Low	Codominant arises from base, twig and branch dieback.
77	Monterey cypress	21,20,19,1 9,18,16,13 ,13,10,7	Significant	3	Low	Multiple attachments arise at base, topped for utility clearance.
78	Monterey cypress	28,8	Significant	4	Moderate	Codominant arise from 5ft; low branching.
79	Monterey cypress	36,19,11,7 ,6	Significant	3	Moderate	Codominant arising from base, pruned for road clearance.
80	Monterey pine	14	Significant	3	Moderate	Mid slope, good upright form, healthy foliage.
81	Monterey cypress	14	Significant	3	Moderate	Topped for line clearance, full crown.
82	Monterey cypress	11	No	3	Moderate	Upright form; crowded; one sided to west.
83	Monterey cypress	14	Significant	3	Moderate	Upright form; crowded; one sided to east.
84	Monterey cypress	22,6	Significant	4	High	Codominant arises from base; upright form; slightly sparse.
85	Monterey cypress	13	Significant	3	Moderate	One sided to south, crowded.
86	Monterey pine	14	Significant	2	Low	High sparse foliage; twig and branch dieback.
87	Monterey cypress	26,26,18,1 4,14,12,11 ,9,8,7,7,7	Significant	3	Low	Codominant arising from base; poor structure .one sided to west.
88	Monterey cypress	16,13	Significant	2	Low	Codominant arising from 3ft; high sparse canopy.
89	Monterey cypress	34	Significant	3	Low	Upright form; high crown bows to east; history of branch failure, twig and branch failure.
90	Monterey cypress	28	Significant	3	Low	Upright form; high crown twig and branch dieback.
91	Monterey cypress	6	No	1	Low	Heavily suppressed to west; Twig and branch dieback.
92	Monterey cypress	6	No	1	Low	One sided to west; sparse crown twig and branch dieback.
93	Monterey cypress	29	Significant	2	Low	Upright; high sparse crown twig and branch dieback.

Tree Assessment

Cypress Point
Moss Beach, CA
May 2022



Tree No.	Species	Trunk Diameter (in.)	Protected Tree?	Condition 1=poor 5=excellent	Suitability for Preservation	Comments
94	Monterey cypress	32	Significant	2	Low	Engulfed in ivy; high crown twig and branch dieback.
95	Monterey cypress	32	Significant	2	Low	High crown twig and branch dieback; history of branch failure.
96	Monterey cypress	23,22,17,17,16,10	Significant	2	Low	Codominant arising from 1ft; Engulfed in ivy; high sparse crown twig and branch dieback; history of stem failure.
97	Monterey cypress	25	Significant	2	Low	High sparse crown twig and branch dieback.
98	Monterey cypress	26	Significant	2	Low	High sparse crown twig and branch dieback.
99	Monterey cypress	25	Significant	2	Low	High sparse crown twig and branch dieback.
100	Monterey cypress	24	Significant	2	Low	High sparse crown twig and branch dieback.
101	Monterey cypress	36	Significant	2	Low	Topped and pruned for road; one sided to west; dieback of main leader.
102	Monterey cypress	16	Significant	3	Low	Growing through utility lines; sweep and one sided to east.
103	Monterey cypress	27	Significant	4	High	Utility lines pass through canopy; full dense canopy; good form.
104	Monterey pine	22	Significant	3	Low	Codominant at 4 ft; branching to ground on west; slightly sparse canopy.
105	Monterey pine	24	Significant	3	Moderate	One sided to SE; good form.
106	Monterey cypress	40,10,10,7,7,6,5	Significant	4	Moderate	Multiple attachments at base; full canopy; distanced from other trees.
107	Monterey pine	14	Significant	3	Low	One sided to south; crowded canopy; lower branches dead.
108	Monterey cypress	42	Significant	3	Moderate	Multiple attachments at 6ft; one sided to south; history of branch failure.
109	Monterey cypress	48,36,26,20,18,17,16,12,12	Significant	3	Moderate	Multiple attachments at base; stems on a side bow to south; main leader upright.
110	Monterey pine	10	No	3	Low	One sided to SE; crowded on NE; young; codominant at 10ft.
111	Monterey cypress	48	Significant	3	Moderate	Multiple attachments at 4 ft; one sided to SE.

Tree Assessment

Cypress Point
Moss Beach, CA
May 2022



Tree No.	Species	Trunk Diameter (in.)	Protected Tree?	Condition 1=poor 5=excellent	Suitability for Preservation	Comments
112	Monterey cypress	26,24,20,1 5,15,12,10 ,10,9	Significant	3	Low	Multiple attachments at base; sparse canopy; top of slope.
113	Monterey cypress	32	Significant	3	Moderate	Codominant at 6ft; interior tree; crowded form.
114	Monterey cypress	32	Significant	3	Moderate	Good upright form; high canopy; lower branches dead.
115	Monterey cypress	18,14,10,9 ,6,5	Significant	1	Low	Failed at base to south; all but dead.
116	Monterey cypress	9	No	1	Low	Lost central leader; all but dead.
117	Monterey cypress	30	Significant	3	Moderate	Upright form; high small canopy.
118	Monterey pine	26	Significant	2	Low	One sided and bows to NW; high sparse canopy.
119	Monterey pine	25	Significant	2	Low	One sided and bows to NW; high sparse canopy.
120	Monterey pine	31	Significant	2	Low	Upright form; high sparse canopy; branch dieback.
121	Monterey cypress	42	Significant	4	High	Good upright form; slightly one sided to west.
122	Monterey cypress	28	Significant	3	Moderate	Upright narrow form; slightly sparse canopy.
123	Monterey cypress	35	Significant	4	Moderate	Upright form; one sided to west; ivy nearly to top of tree.
124	Monterey pine	7,6	No	3	Low	Codominant at base; one sided to west; young.
125	Monterey cypress	6	No	2	Low	No central leader; crowded; sparse canopy.
126	Monterey cypress	12,4	Significant	3	Low	Upright form; one sided to west; crowded on south.
127	Monterey pine	17	Significant	4	Moderate	Good upright form; full canopy.
128	Monterey pine	7	No	3	Moderate	Crowded; high canopy.
129	Monterey pine	10	No	3	Low	Codominant at 4 ft; crowded.
130	Monterey pine	8,5	No	3	Moderate	Codominant at 3 ft; slightly crowded; full canopy.
131	Monterey pine	11,7	Significant	4	Moderate	Codominant at 3 ft; crowded on east; branching nearly to ground on S.
132	Monterey pine	9	No	3	Moderate	Upright form; lost central leader; full canopy.

Tree Assessment

Cypress Point
Moss Beach, CA
May 2022



Tree No.	Species	Trunk Diameter (in.)	Protected Tree?	Condition 1=poor 5=excellent	Suitability for Preservation	Comments
133	Monterey pine	35,28,17	Significant	1	Low	Multiple attachments at 3 ft; 17 in leader dead; history of branch failure; sparse canopy.
134	Monterey pine	14,11	Significant	3	Low	Codominant at 2 ft; leaders leaning away from one another.
135	Monterey pine	12	Significant	2	Low	Failed at base to east; all but dead.
136	Monterey pine	10	No	2	Low	One sided to west; suppressed.
137	Monterey pine	23	Significant	4	Moderate	Upright form; full canopy; small amount of tip dieback; bottom of slope.
138	Monterey pine	18	Significant	4	Moderate	Good upright form; branching nearly to ground; full canopy.
139	Monterey pine	24	Significant	4	Moderate	Good upright form; full canopy; branching nearly to ground.
140	Monterey pine	18	Significant	4	Moderate	Codominant at 7 ft; one sided to west; crowded on east; full canopy.
141	Monterey pine	14	Significant	4	Moderate	Good upright form; full canopy; branching to ground on south.
142	Monterey pine	8	No	3	Low	Good upright form; full canopy; crowded on NE.
143	Monterey pine	10,6,5	Significant	2	Low	Multiple attachments at 2 ft; twig and branch dieback; sparse canopy.
144	Monterey pine	6	No	5	High	Good upright form; full dense canopy; good young tree.
145	Monterey pine	48,28,28,2 2,20,16	Significant	3	Low	Multiple attachments at 1 ft; poor structure; utility lines pass through canopy; wide slightly sparse canopy.
146	Monterey pine	11	No	3	Moderate	Upright narrow form; one sided to west; crowded on east.
147	Monterey cypress	28,17,13,1 0,10,8,8,8	Significant	3	Low	Topped for high voltage; multiple attachments at 1 ft; crowded on east; history of branch failure.
148	Monterey cypress	45,38,26,1 4,13,13	Significant	3	Low	Eastern half failed; topped for utility lines; V-shaped canopy.
149	Monterey pine	7	No	3	Moderate	Upright form; young tree; crowded.
150	Monterey pine	16	Significant	3	Moderate	Good upright form; crowded on NE by dead tree; full canopy.
151	Monterey cypress	36,14,10	Significant	3	Moderate	No tag private property; topped for utility lines.

Tree Assessment

Cypress Point
Moss Beach, CA
May 2022



Tree No.	Species	Trunk Diameter (in.)	Protected Tree?	Condition 1=poor 5=excellent	Suitability for Preservation	Comments
152	Monterey cypress	32	Significant	4	High	No tag private property; good upright form; crowded.
153	Monterey cypress	31	Significant	4	High	No tag private property; upright form; crowded; full canopy.
154	Monterey cypress	17	Significant	4	High	No tag private property; upright form; crowded; full canopy.
155	Monterey cypress	37,9	Significant	4	High	No tag private property; sweep to NE; crowded; full canopy.
156	Monterey cypress	18	Significant	4	High	No tag private property; upright form; crowded; full canopy.
157	Monterey cypress	26,7	Significant	4	High	No tag private property; upright form; crowded; full canopy.
158	Monterey cypress	32	Significant	4	High	No tag private property; upright form; crowded; full canopy.
159	Monterey cypress	13,9	Significant	4	High	No tag private property; codominant at 2 ft; crowded.
160	Monterey cypress	36	Significant	4	Moderate	No tag private property; codominant at 8 ft with seam; crowded; full canopy.
161	Monterey cypress	34	Significant	4	High	No tag private property; multiple attachments at 7 ft; crowded; full canopy.
162	Monterey cypress	29	Significant	4	High	No tag private property; codominant at 3ft; crowded.
163	Monterey cypress	13,7	Significant	4	Moderate	No tag private property; codominant at 2 ft; crowded.
164	Monterey cypress	14,	Significant	4	Moderate	No tag private property; codominant at 2 ft; E side sweep to E; crowded.
165	Monterey cypress	28,13	Significant	4	Moderate	No tag private property; codominant at 1 ft; crowded; full canopy.
166	Monterey cypress	21,12	Significant	4	Moderate	No tag private property; codominant at 2 ft; crowded.
167	Italian stone pine	13,12,11,10	Significant	4	Moderate	Codominant and multiple attachments at base; full dense canopy; branching to ground.
168	Monterey cypress	19,19,15,14,14,13,12,12,10,9,7,7	Significant	4	Moderate	Multiple attachments at base; low branching; full canopy.
169	Monterey pine	25	Significant	3	Low	Multiple attachments at base; pruned for utility lines; branching to the ground; somewhat sparse canopy.

Tree Assessment

Cypress Point
Moss Beach, CA
May 2022



Tree No.	Species	Trunk Diameter (in.)	Protected Tree?	Condition 1=poor 5=excellent	Suitability for Preservation	Comments
170	Monterey pine	8	No	2	Low	Upright form; high sparse canopy; crowded.
171	Monterey pine	9	No	2	Low	Multiple attachments at 7 ft; suppressed; one sided to S.
172	Monterey pine	14	Significant	2	Low	Multiple attachments at base; one sided to S; lower branches dead.
173	Monterey pine	11	No	2	Low	High sparse canopy; crowded.
174	Monterey pine	14	Significant	2	Low	Upright form; high sparse canopy; crowded.
175	Monterey pine	8	No	2	Low	Upright form; high sparse canopy; crowded.
176	Monterey pine	18	Significant	2	Low	One sided to north; upright form; crowded.
177	Monterey pine	16	Significant	3	Low	One sided to north; sparse canopy; branching to ground.
178	Monterey pine	17	Significant	2	Low	Multiple attachments at 5 ft; one sided to south; sparse canopy.
179	Monterey pine	17	Significant	4	Moderate	Good upright form; sparse on north side.
180	Monterey pine	17	Significant	2	Low	Codominant at 5 ft; low branches dead; crowded on E.
181	Monterey pine	16	Significant	2	Low	Upright form; one sided sparse canopy to south.
182	Monterey pine	12	Significant	2	Low	Upright form; one sided to south; sparse canopy.
183	Monterey pine	8	No	2	Low	Upright form; high sparse canopy.
184	Monterey pine	15	Significant	3	Low	Upright narrow form; sparse canopy.
185	Monterey pine	15	Significant	2	Low	Sparse canopy; canker girdling main trunk at 15 ft; crowded on south.
186	Monterey pine	11	No	2	Low	Upright form; western gall rust infestation in vicinity; high sparse canopy.
187	Monterey pine	9	No	1	Low	All but dead; suppressed.
188	Monterey pine	11	No	2	Low	Lean to S; crowded on N; high sparse canopy.
189	Monterey cypress	21,16,15,1 5,14,10,10	Significant	3	Low	Multiple attachments at base; one sided to north; branching to ground.
190	Monterey pine	15	Significant	3	Low	Upright; high sparse canopy; low branches dead.

Tree Assessment

Cypress Point
Moss Beach, CA
May 2022



Tree No.	Species	Trunk Diameter (in.)	Protected Tree?	Condition 1=poor 5=excellent	Suitability for Preservation	Comments
191	Monterey pine	8	No	1	Low	Lost main leader; all but dead.
192	Monterey pine	10	No	2	Low	High sparse canopy; upright crowded form.
193	Monterey pine	14	Significant	2	Low	High sparse canopy; one sided to east; crowded.
194	Monterey pine	14	Significant	3	Low	Upright form; high canopy; one sided to south.
195	Monterey pine	13	Significant	3	Low	Good upright form; western gall rust infestation in area; somewhat sparse canopy.
196	Monterey pine	11	No	2	Low	High sparse canopy; crowded.
197	Monterey pine	15	Significant	1	Low	Codominant with narrow attachment at 5 ft; high sparse canopy.
198	Monterey cypress	28,24,16,12,9	Significant	3	Low	Multiple attachments at base; high sparse canopy; low branches dead.
199	Monterey pine	8	No	2	Low	One sided to north; suppressed.
200	Monterey pine	6	No	1	Low	All but dead; suppressed.
201	Monterey pine	14,8	Significant	2	Low	Multiple attachments at 2 ft; suppressed; one sided to north.
202	Monterey pine	14	Significant	2	Low	One sided to north; suppressed; low branches dead.
203	Monterey pine	6	No	3	Low	Upright crowded form; poor color.
204	Monterey pine	7	No	1	Low	Suppressed; all but dead.
205	Monterey pine	10	No	2	Low	Suppressed; one sided to south; high sparse canopy.
206	Monterey pine	9	No	2	Low	High sparse canopy; one sided to south; crowded on north.
207	Monterey pine	13	Significant	2	Low	Upright form; crowded on south; crook in trunk at 4 ft.
208	Monterey pine	11	No	2	Low	Upright form; high sparse canopy; crowded on west.
209	Monterey pine	13	Significant	2	Low	Lean to west; one sided to west.
210	Monterey pine	18	Significant	1	Low	Sweep in low trunk; all but dead.
211	Monterey cypress	24,24,22,18,13,13,12,8	Significant	4	Moderate	Multiple attachments at base; full canopy; low branches dead.
212	Monterey pine	9	No	2	Low	Upright form; main leader dying; sparse canopy.

Tree Assessment

Cypress Point
Moss Beach, CA
May 2022



Tree No.	Species	Trunk Diameter (in.)	Protected Tree?	Condition 1=poor 5=excellent	Suitability for Preservation	Comments
213	Monterey pine	16,11	Significant	1	Low	All but dead.
214	Monterey pine	17,15,8	Significant	1	Low	Multiple attachments at base; sparse canopy.
215	Monterey cypress	10,5,5,5,5	Significant	2	Low	Multiple attachments at 1 ft; sparse canopy; one sided to north.
216	Monterey pine	9	No	2	Low	Upright form; lost main leader at top; sparse canopy.
217	Monterey pine	22,18	Significant	2	Low	Codominant at 3 ft; one sided to SW; sparse canopy.
218	Monterey cypress	60	Significant	4	Moderate	Multiple attachments at base; branching to ground on SE; full canopy.
219	Monterey pine	12	Significant	2	Low	Lean to NW; one sided to NW; crowded.
220	Monterey pine	9	No	2	Low	High canopy; growing through canopy of cypress.
221	Monterey cypress	9,4,3,2	No	3	Low	Multiple attachments at 1 ft; one sided to north.
222	Monterey pine	16,10,9,8,6	Significant	1	Low	Multiple attachments at base; 3 leaders horizontally growing at ground; all but dead.
223	Monterey pine	16	Significant	2	Low	Upright form; lost main leader at 20 ft; high canopy.
224	Monterey pine	19	Significant	1	Low	One sided to south; high very sparse canopy.
225	Monterey pine	18	Significant	2	Low	Codominant at 15 ft; high sparse canopy.
226	Monterey cypress	18	Significant	2	Low	High sparse canopy; main leader removed at top.
227	Monterey cypress	8	No	2	Low	One sided to west; sparse canopy; crowded.
228	Monterey pine	13	Significant	3	Low	Upright form; main leader lost at top; one sided to NW.
229	Monterey cypress	17,7	Significant	3	Low	Multiple attachments at base; crowded form; high canopy.
230	Monterey pine	8	No	3	Low	Lean to N; one sided to north; crowded on S.
231	Monterey pine	13,9	Significant	4	Moderate	Multiple attachments at 1 ft; good young tree.
232	Monterey pine	7	No	5	High	Good upright young tree; branching to the ground.
233	Monterey cypress	13,7,4,4	Significant	4	High	Multiple attachments at base; full dense canopy; branching nearly to ground.
234	Monterey cypress	9,7,4	Significant	4	Moderate	Multiple attachments at 1 ft; somewhat one sided to west; some twig dieback.

Tree Assessment

Cypress Point
Moss Beach, CA
May 2022



Tree No.	Species	Trunk Diameter (in.)	Protected Tree?	Condition 1=poor 5=excellent	Suitability for Preservation	Comments
235	Monterey cypress	37	Significant	3	Moderate	Multiple attachments at 3ft; one sided to east.
236	Monterey cypress	17	Significant	3	Low	One sided to north; canopy overhangs driveway.
237	Monterey cypress	22	Significant	2	Low	One sided to west; base sweeps to west; located on top of slope.
238	Monterey cypress	38	Significant	3	Low	Codominant at 3 ft and 8 ft; one sided to south; utility lines pass through canopy; pruned for pole clearance.
239	Monterey cypress	18	Significant	2	Low	High sparse canopy; lines in contact with trunk; lower branches shaded and dead.
240	Monterey cypress	22	Significant	3	Low	Multiple attachments at 3 ft; one sided to east.
241	Monterey cypress	24,13,10,8,7,6,4	Significant	3	Low	Multiple attachments at base; one sided to east; pruned for road and sidewalk.
242	Italian stone pine	6	No	5	High	Good upright young tree.
243	Monterey pine	10,9	Significant	3	Low	Codominant at base; sparse canopy; lower limb dieback.
244	Monterey pine	6,3	No	4	Moderate	Multiple attachments at 3 ft; good upright young tree.
245	Monterey pine	6	No	3	Moderate	Sparse lower canopy; slight lean west; one sided to SW.
246	Monterey pine	19	Significant	3	Low	Sparse canopy; branching to the ground; twig dieback.
247	Monterey pine	7,4	No	2	Low	Sparse canopy; pine pitch canker infestation; dieback throughout canopy.
248	Monterey pine	14,11	Significant	3	Low	Codominant at 2 ft with large seam; sparse canopy; lower limbs dead.
249	Monterey cypress	19,18,12,12,7,6,6,5,5,4,4,4,4	Significant	3	Low	Multiple attachments at base; half of tree failed on SW.
250	Monterey pine	18,15,8	Significant	2	Low	Codominant at 2 ft; one sided to west; sparse canopy.
251	Monterey pine	22	Significant	3	Low	Crowded on east; sparse canopy; lower limb dieback.
252	Monterey pine	16	Significant	3	Low	Slight lean and one sided to east; sparse canopy.
253	Monterey pine	21,11	Significant	3	Low	Multiple attachments at 2 ft; slight dieback in upper canopy.

Tree Assessment

Cypress Point
Moss Beach, CA
May 2022



Tree No.	Species	Trunk Diameter (in.)	Protected Tree?	Condition 1=poor 5=excellent	Suitability for Preservation	Comments
254	Monterey pine	34,12	Significant	1	Low	Multiple attachments at base; all but dead.
255	Monterey pine	7	No	4	High	Good young tree; slightly sparse.
256	Monterey pine	8	No	4	Moderate	Codominant at 5 ft; full canopy.
257	Monterey pine	7	No	3	Low	Sparse canopy; trunk damage at 4 ft; one sided to S.
258	Monterey pine	8	No	4	Moderate	Somewhat one sided to NW; branching nearly to ground on west.
259	Monterey pine	10	No	4	Moderate	Codominant at 9 ft; lower limbs removed for path clearance.
260	Monterey pine	8	No	4	Moderate	Good young tree; slightly sparse; base crowded by toyon.
261	Monterey pine	8	No	4	High	Good young tree; full canopy; branching to ground.
262	Monterey pine	12	Significant	5	High	Good upright form; full dense canopy; ivy climbing trunk.
263	Monterey cypress	38	Significant	3	Moderate	Large failure on north side; multiple attachments at 5 ft; full canopy.
264	Monterey pine	6	No	4	Low	Good upright form; pine pitch canker and dieback.
265	Monterey pine	15	Significant	4	Low	Full dense canopy; pine pitch canker.
266	Monterey pine	7	No	3	Low	Codominant at 8 ft; sparse canopy.
267	Monterey pine	40	Significant	3	Low	No physical tag; engulfed in poison oak; lost central leader; branching to the ground.
268	Monterey pine	13	Significant	4	Moderate	Young tree; top of slope; slight dieback at top.
269	Monterey pine	17	Significant	4	High	Full dense canopy; low branching; possible pine pitch canker.
270	Italian stone pine	6,5,4,4,4	No	4	High	Tagged on outside branch; engulfed in poison oak; multiple attachments at base; good young tree.
271	Monterey pine	7,5	No	4	Moderate	Codominant at base; full dense canopy.
272	Monterey pine	24,10,7,5	Significant	3	Low	Multiple attachments at 2 ft; dieback throughout canopy; pine pitch canker.
273	Monterey pine	22,13,11	Significant	3	Low	Multiple attachments at 1 ft; topped; lower branches dead.

Tree Assessment

Cypress Point
Moss Beach, CA
May 2022



Tree No.	Species	Trunk Diameter (in.)	Protected Tree?	Condition 1=poor 5=excellent	Suitability for Preservation	Comments
274	Monterey pine	26,10,6	Significant	2	Low	Multiple attachments at base; topped; lower branches dead; sparse canopy.
275	Monterey pine	25,9	Significant	2	Low	Multiple attachments at base; high sparse canopy; lower branches dead.
276	Monterey pine	9,8	Significant	3	Low	Partial failure at base; topped for utility lines; somewhat sparse canopy.
277	Monterey pine	20	Significant	2	Low	Multiple attachments at 4 ft; high sparse canopy; lower branches dead.
278	Monterey pine	6	No	3	Low	High sparse canopy; upright form.
279	Monterey pine	8	No	3	Low	High sparse canopy; slightly crowded form.
280	Monterey pine	11	No	3	Low	High sparse canopy; slightly crowded.
281	Monterey pine	7	No	3	Low	Sparse canopy; crowded.
282	Monterey pine	7	No	3	Moderate	Somewhat sparse canopy; slightly one sided to SW.
283	Monterey pine	7	No	3	Moderate	High sparse canopy; somewhat crowded.
284	Monterey pine	22	Significant	3	Low	Codominant at 4 ft; somewhat sparse canopy; lower branches dead.
285	Monterey pine	10	No	3	Moderate	Crowded on north; full canopy.
286	Monterey cypress	26,13,13,6,6	Significant	3	Moderate	Multiple attachments at 1 ft; codominant at 15 ft; pruned on east for road clearance.
287	Monterey cypress	38,30,28,26,13	Significant	2	Low	Multiple attachments at base; topped for utility lines; remaining live branches bow over road to west.
288	Monterey cypress	15,15	Significant	1	Low	Codominant at base; half tree failed and is laying on ground; all but dead.
289	Monterey cypress	22,20	Significant	1	Low	Topped for utility lines; all but dead.
290	Monterey cypress	15	Significant	1	Low	Topped for utility lines; all but dead.
291	Monterey cypress	14	Significant	1	Low	Topped for utility lines; all but dead.
292	Monterey cypress	30,22,20	Significant	1	Low	Topped for utility lines; all but dead.

Tree Assessment

Cypress Point
Moss Beach, CA
May 2022



Tree No.	Species	Trunk Diameter (in.)	Protected Tree?	Condition 1=poor 5=excellent	Suitability for Preservation	Comments
293	Monterey cypress	34,30,28,2 7,24,12	Significant	1	Low	Topped for utility lines; failed stem to NE; all but dead.
294	Monterey cypress	14	Significant	2	Low	Suppressed; central leader extends SE.
295	Monterey pine	7	No	2	Low	High sparse canopy; suppressed.
296	Monterey cypress	6	No	2	Low	High sparse canopy; suppressed.
297	Monterey cypress	6,4	No	3	Low	Multiple attachments at base; lean to west.
298	Monterey pine	8	No	2	Low	Lost central leader; high sparse canopy.
299	Monterey cypress	7	No	3	Moderate	High sparse canopy; suppressed.
300	Monterey cypress	9	No	4	Moderate	High slightly sparse foliage; upright.
301	Monterey pine	8	No	1	Low	All but dead.
302	Monterey pine	13	Significant	3	Moderate	Somewhat sparse canopy; upright form.
303	Monterey pine	14	Significant	2	Low	Lost central leader; very sparse canopy.
304	Monterey cypress	38	Significant	3	Moderate	Somewhat one sided to west; lower branches dead.
305	Monterey pine	22	Significant	1	Low	All but dead.
306	Monterey pine	7	No	3	Low	Suppressed; high sparse canopy.
307	Monterey cypress	24	Significant	2	Low	Tree bows to east over dirt road.
308	Monterey cypress	29	Significant	3	Low	One sided to north; suppressed.
309	Monterey cypress	68	Significant	3	Low	Multiple attachments at 5 ft; crowded.
310	Monterey cypress	25	Significant	3	Low	High sparse canopy; crowded.
311	Monterey cypress	18,15,13,1 3,13,12,12 ,12	Significant	1	Low	One sided to south; all but dead.
312	Monterey cypress	20,13,6,6, 6,5	Significant	3	Low	Multiple attachments at 1 ft; high sparse canopy; lower branches dead.
313	Monterey pine	15	Significant	2	Low	One sided to south; sparse canopy.

Tree Assessment

Cypress Point
Moss Beach, CA
May 2022



Tree No.	Species	Trunk Diameter (in.)	Protected Tree?	Condition 1=poor 5=excellent	Suitability for Preservation	Comments
314	Monterey cypress	22,8,5,4	Significant	3	Moderate	Multiple attachments at base; one sided to north; crowded on south.
315	Monterey pine	24	Significant	3	Low	One sided to south; sparse canopy.
316	Monterey pine	15	Significant	3	Low	High sparse canopy; crowded.
317	Monterey pine	14	Significant	1	Low	All but dead.
318	Monterey pine	8	No	2	Low	High sparse canopy; slight lean to south.
319	Monterey pine	25	Significant	2	Low	Slightly one sided to south; sparse canopy; lower branches dead.
320	Monterey pine	28	Significant	3	Low	Sparse canopy; upright form; low branching.
321	Monterey pine	10	No	3	Low	Suppressed; high canopy.
322	Monterey pine	18	Significant	3	Low	One sided to north; pine pitch canker; lower branches dead.
323	Monterey pine	25	Significant	2	Low	Lost leader; sparse canopy.
324	Monterey pine	15,14,13	Significant	3	Low	Multiple attachments at base; east leader partially laying on ground.
325	Monterey pine	16	Significant	3	Low	High sparse canopy; suppressed.
326	Monterey cypress	15,14,7,6,4,4	Significant	3	Low	Multiple attachments at base somewhat suppressed; sparse canopy.
327	Monterey cypress	9,6	No	3	Low	Codominant at base; fused branches at 15 ft; suppressed.
328	Monterey pine	15	Significant	2	Low	Suppressed upright form; sparse canopy.
329	Monterey pine	17	Significant	1	Low	All but dead.
330	Monterey pine	6	No	2	Low	High sparse canopy; suppressed.
331	Monterey cypress	6,5	No	3	Low	Multiple attachments at base; suppressed.
332	Monterey cypress	9,4	No	3	Low	Multiple attachments at base; suppressed.
333	Monterey pine	16	Significant	1	Low	All but dead.
334	Monterey cypress	8,5,5,4,3	Significant	2	Low	Multiple attachments at base; suppressed; fused stems.
335	Monterey pine	21	Significant	1	Low	Codominant at 4 ft; all but dead.

Tree Assessment

Cypress Point
Moss Beach, CA
May 2022



Tree No.	Species	Trunk Diameter (in.)	Protected Tree?	Condition 1=poor 5=excellent	Suitability for Preservation	Comments
336	Monterey pine	9	No	2	Low	One sided to east; slight lean to east; sparse canopy.
337	Monterey cypress	10	No	3	Moderate	One sided to north; low branching; somewhat sparse.
338	Monterey pine	12	Significant	2	Low	Very sparse high canopy; suppressed.
339	Monterey pine	7	No	2	Low	Very sparse high canopy; suppressed.
340	Monterey pine	10	No	2	Low	Slight lean to south; high sparse canopy.
341	Monterey pine	12	Significant	2	Low	High sparse canopy; suppressed.
342	Monterey cypress	20,10,7,7, 6,6	Significant	3	Moderate	Multiple attachments at base and codominant at 5 ft; one sided to NW.
343	Monterey cypress	48,25,14,1 2,12	Significant	3	Moderate	Multiple attachments at 5 ft; one sided to west.
344	Monterey pine	19	Significant	1	Low	All but dead; base close to 343.
345	Monterey pine	17	Significant	2	Low	One sided to west; very sparse.
346	Monterey pine	12	Significant	2	Low	Lost leader; sparse.
347	Monterey pine	16	Significant	2	Low	Lost leader; very sparse.
348	Monterey pine	6	No	3	Low	Slight lean to south; sparse.
349	Monterey pine	8	No	3	Moderate	Upright form; slightly sparse canopy; good young tree.
350	Monterey pine	6	No	3	Low	Upright; slightly sparse.
351	Monterey pine	7	No	2	Low	Lost leader; all but dead.
352	Monterey pine	10	No	3	Moderate	Good upright form; slightly sparse canopy.
353	Monterey pine	6	No	2	Low	Suppressed; sparse canopy.
354	Monterey cypress	7	No	3	Moderate	Good upright form; slightly one sided to west.
355	Monterey pine	12	Significant	3	Low	One sided to west; upright; high canopy.
356	Monterey pine	16	Significant	3	Low	Lower branches dead; high canopy; slightly one sided to west.
357	Monterey cypress	9,8,4	Significant	3	Low	Multiple attachments at base; narrow attachment; narrow form.
358	Monterey cypress	9	No	4	High	Good upright form; slightly one sided to west.

Tree Assessment

Cypress Point
Moss Beach, CA
May 2022



Tree No.	Species	Trunk Diameter (in.)	Protected Tree?	Condition 1=poor 5=excellent	Suitability for Preservation	Comments
359	Monterey pine	7	No	3	Moderate	Narrow upright form; slightly sparse canopy.
360	Monterey pine	10	No	3	Moderate	One sided to west; crowded on east; narrow upright form.
361	Monterey cypress	6	No	3	Moderate	Top bows to east; slightly sparse canopy.
362	Monterey pine	13,11	Significant	3	Low	Leaders originate from stump; full canopy; poor structure.
363	Monterey cypress	11	No	3	Moderate	Full dense canopy; low branching; lean to south.
364	Monterey cypress	6,6,5,5,4,4	Significant	4	Moderate	Multiple attachments at base; full dense canopy; low branching.
365	Monterey cypress	8,6,5,4	Significant	4	Moderate	Tag on small stump; multiple attachments at base; full dense canopy; low branching.
366	Monterey cypress	7,6,4,4,3,3	Significant	4	Moderate	Multiple attachments at base; full dense canopy; low branching.
367	Monterey cypress	6,4,2,2	No	3	Moderate	One sided to west; suppressed on north.
368	Monterey cypress	52	Significant	3	Moderate	Multiple attachments at 5 ft; slight lean to south; failed leader on east.
369	Monterey pine	18	Significant	5	High	Good upright form; full canopy.
370	Monterey pine	12	Significant	3	Moderate	Good upright form; full canopy; poor color high in canopy.
371	Monterey pine	20,18	Significant	3	Low	18 inch stem attached at base and turns upward at 1 ft; N leader codominant at 5 ft.
372	Monterey pine	8,7,5	Significant	3	Low	Multiple attachments at 1 ft; full canopy.
373	Monterey pine	10	No	3	Moderate	Slightly one sided to north; upright form.
374	Monterey pine	9	No	3	Moderate	Good upright form; slightly one sided to south.
375	Monterey pine	24	Significant	4	Moderate	Good upright form; full canopy; significant sap ooze on trunk.
376	Monterey pine	45	Significant	1	Low	Utility pole to south; very sparse canopy; all but dead.
377	Monterey pine	6,3	No	4	Moderate	Multiple attachments at 1 ft; full canopy.
378	Monterey pine	22,9,8,6,6	Significant	3	Low	Multiple attachments at 3 ft; topped; dieback throughout canopy.

Tree Assessment

Cypress Point
Moss Beach, CA
May 2022



Tree No.	Species	Trunk Diameter (in.)	Protected Tree?	Condition 1=poor 5=excellent	Suitability for Preservation	Comments
379	Monterey pine	12	Significant	3	Low	Slight bow to south; high canopy.
380	Monterey pine	22	Significant	3	Low	Lost central leader; low branching on west; slight dieback in canopy.
381	Monterey pine	9	No	2	Low	Canker on west side; dieback throughout canopy; poor color.
382	Monterey pine	24	Significant	2	Low	Lost central leader; dieback throughout canopy.
383	Monterey pine	6	No	4	High	Good young upright tree.
384	Monterey pine	7	No	3	Moderate	Codominant at 9 ft; crowded.
385	Monterey pine	6	No	3	Moderate	Good upright form; crowded.
386	Monterey pine	7	No	5	High	Good young tree.
387	Monterey pine	6	No	3	Low	Upright form; poor color.
388	Monterey pine	7	No	4	Moderate	Slight lean to west; signage and pole at base; young tree.
389	Monterey pine	34,18,17,12,10	Significant	2	Low	Multiple attachments at base; sparse canopy; one sided to west.
390	Monterey pine	36	Significant	2	Low	Codominant at 11 ft; one sided to S; sparse canopy.
391	Monterey pine	36	Significant	2	Low	One sided to north; sparse canopy.
392	Monterey pine	13	Significant	2	Low	One sided to north; sparse canopy; younger tree.
393	Monterey pine	26	Significant	2	Low	One sided to W; branching to ground on W.
394	Monterey pine	17	Significant	1	Low	Tagged on low branch; engulfed in poison oak; leader dead at top; all but dead.
395	Monterey pine	16	Significant	2	Low	High sparse canopy; one sided to south.
396	Monterey pine	17	Significant	1	Low	All but dead.
397	Monterey pine	25	Significant	2	Low	High sparse canopy; lower branches dead.
398	Monterey pine	19	Significant	2	Low	Mostly one sided to north; high sparse canopy.
399	Monterey pine	16	Significant	2	Low	One sided and slight lean to north; top of steep slope.
400	Monterey pine	17	Significant	2	Low	One sided and slight lean to north; top of steep slope.

Tree Assessment

Cypress Point
Moss Beach, CA
May 2022



Tree No.	Species	Trunk Diameter (in.)	Protected Tree?	Condition 1=poor 5=excellent	Suitability for Preservation	Comments
401	Monterey pine	13	Significant	1	Low	Lost leader; all but dead.
402	Monterey pine	26	Significant	2	Low	Codominant at 7 ft; poor attachment; high sparse canopy.
403	Monterey pine	20	Significant	2	Low	Codominant at 25 ft; lean to east.
404	Monterey pine	13	Significant	1	Low	Codominant at 30 ft; all but dead.
405	Monterey pine	19	Significant	2	Low	High sparse canopy; crowded on south.
406	Monterey pine	17	Significant	2	Low	High sparse canopy; crowded on North.
407	Monterey pine	19,10,7	Significant	2	Low	Multiple attachments at base and 3 ft; one sided to south.
408	Monterey pine	20	Significant	2	Low	Lost main leader; sparse canopy.
409	Monterey pine	24	Significant	2	Low	One sided to south; sparse canopy.
410	Monterey pine	16	Significant	3	Low	One sided and lean to the west.
411	Monterey pine	10	No	1	Low	All but dead; suppressed.
412	Monterey pine	40	Significant	3	Low	Multiple attachments at 6 ft; somewhat one sided to west.
413	Myoporum	10	No	3	Moderate	Suppressed; good young tree.
414	Monterey pine	45	Significant	3	Low	Upright form; somewhat suppressed on north.
415	Monterey pine	14	Significant	2	Low	Slight lean to north; high sparse canopy.
416	Monterey pine	27	Significant	2	Low	Lean and one sided to SE; crowded on NW.
417	Monterey pine	17	Significant	2	Low	One sided to west; sparse canopy.
418	Monterey pine	22	Significant	2	Low	One sided to south; sparse canopy.
419	Monterey pine	35	Significant	1	Low	One sided to south; extremely sparse canopy.
420	Monterey pine	44	Significant	1	Low	Codominant at 5 ft; tight fused attachment; high sparse canopy.
421	Monterey pine	38	Significant	1	Low	Multiple attachments at 5 ft; poor attachment; high sparse canopy.
422	Monterey pine	25,16	Significant	2	Low	Main leader curves to east at 25 ft; high sparse canopy.
423	Monterey pine	38	Significant	2	Low	Lost main leader at top; heavy to south; sparse canopy.
424	Monterey pine	15	Significant	2	Low	Suppressed; crook in main leader high in canopy.

Tree Assessment

Cypress Point
Moss Beach, CA
May 2022



Tree No.	Species	Trunk Diameter (in.)	Protected Tree?	Condition 1=poor 5=excellent	Suitability for Preservation	Comments
425	Monterey pine	28	Significant	3	Low	One sided to north; sparse canopy.
426	Monterey pine	10	No	2	Low	Narrow upright form; pine pitch canker; sparse canopy.
427	Monterey pine	6	No	2	Low	Narrow upright form; sparse canopy.
428	Monterey pine	8	No	2	Low	Narrow upright form; lost main leader; sparse canopy.
429	Monterey pine	7	No	2	Low	Narrow upright form; sparse canopy; one sided to north.
430	Monterey cypress	8	No	3	Moderate	Narrow upright form; sparse lower canopy.
431	Monterey pine	10	No	3	Moderate	Narrow upright form; sparse lower canopy.
432	Monterey pine	7	No	2	Low	Narrow upright form; sparse canopy.
433	Monterey cypress	8	No	2	Low	One sided to west; narrow upright form; sparse canopy.
434	Monterey pine	7	No	2	Low	Codominant at 5 ft; one sided to west.
435	Monterey pine	18	Significant	1	Low	All but dead.
436	Monterey cypress	8	No	3	Low	Narrow upright form; suppressed.
437	Monterey pine	9	No	2	Low	Lower trunk growing diagonally out of slope; leader turns vertical at 10 ft; suppressed.
438	Monterey cypress	24,18,15,1 2,12,6,6,6	Significant	3	Low	Multiple attachments at base; one sided to west.
439	Monterey pine	20	Significant	4	Moderate	One sided and slight lean to west.
440	Monterey cypress	19	Significant	3	Moderate	One sided to north; top of slope.
441	Monterey cypress	15	Significant	3	Low	Multiple attachments high in canopy; sparse canopy.
442	Monterey pine	16	Significant	3	Moderate	Upright form; somewhat sparse canopy.
443	Monterey pine	23	Significant	2	Low	One sided to north; crowded; sparse canopy.
444	Monterey pine	16	Significant	2	Low	High sparse canopy; upright form.
445	Monterey pine	10	No	2	Low	Crook in main leader high in canopy; high sparse canopy.
446	Monterey cypress	44	Significant	4	Moderate	Upright form; full canopy.

Tree Assessment

Cypress Point
Moss Beach, CA
May 2022



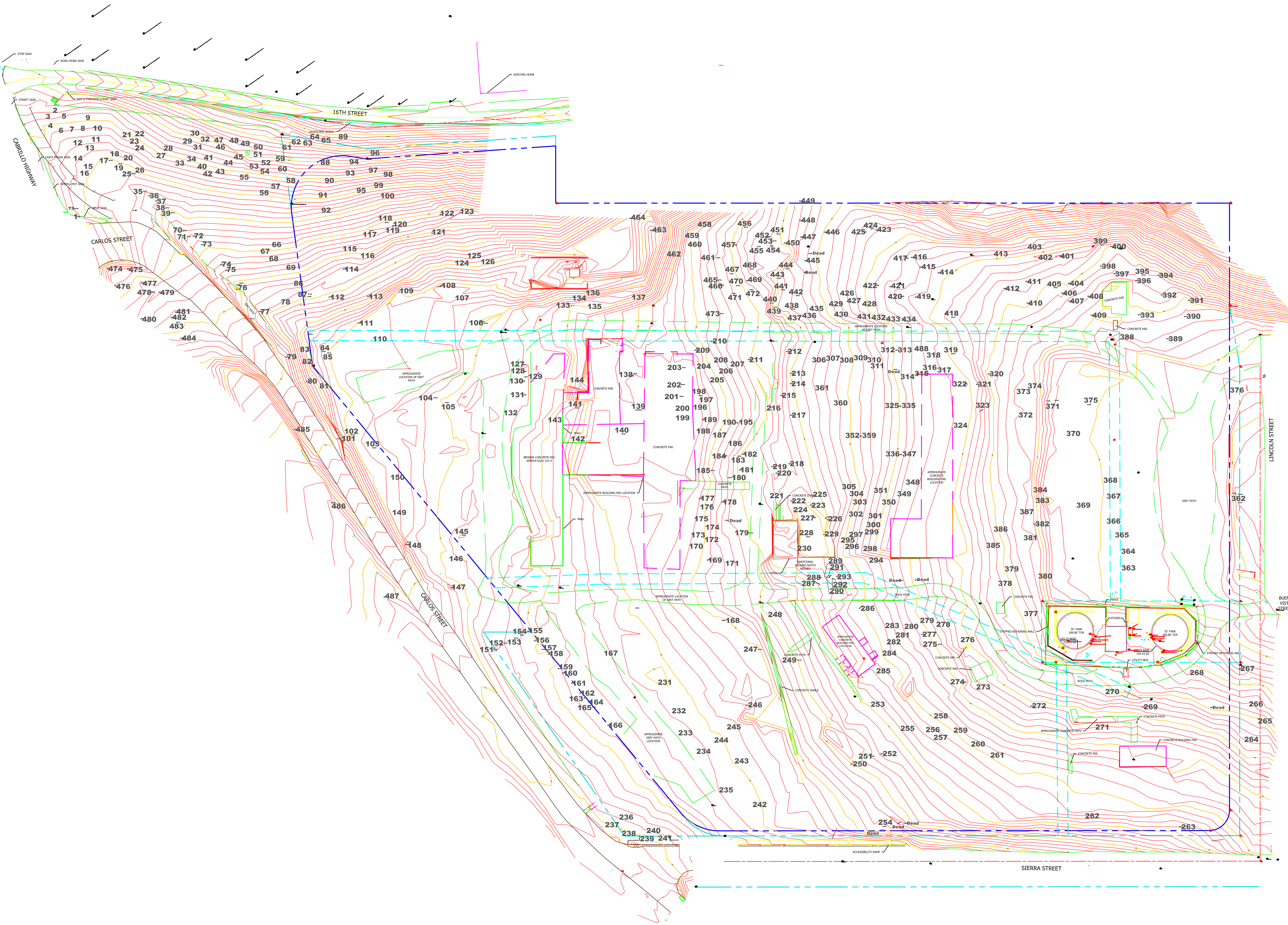
Tree No.	Species	Trunk Diameter (in.)	Protected Tree?	Condition 1=poor 5=excellent	Suitability for Preservation	Comments
447	Monterey pine	30	Significant	2	Low	Codominant at base; poor attachment; sparse canopy.
448	Monterey pine	13	Significant	2	Low	Lean to south; crook in main leader high in canopy; sparse canopy.
449	Monterey pine	18	Significant	3	Moderate	Crowded; high canopy; upright form.
450	Monterey pine	10	No	2	Low	Slight lean and one sided to west; high sparse canopy.
451	Monterey pine	14	Significant	2	Low	Crowded; high sparse canopy.
452	Monterey pine	18	Significant	2	Low	Crook in main leader at 25 ft; high sparse canopy.
453	Monterey pine	6	No	2	Low	Suppressed; sparse canopy.
454	Monterey pine	8	No	2	Low	Suppressed; high sparse canopy; crook in leader high in canopy.
455	Monterey pine	18	Significant	2	Low	Crowded; high sparse canopy; .
456	Monterey pine	18	Significant	3	Low	Lean to south; multiple attachments at 25 ft.
457	Monterey pine	33,28,24	Significant	3	Low	Multiple attachments at base; history of limb failure; somewhat sparse.
458	Monterey pine	13	Significant	3	Low	Upright form; high sparse canopy.
459	Monterey pine	12	Significant	2	Low	Lean to north; curvy main leader.
460	Monterey pine	6	No	3	Moderate	Suppressed; good upright form.
461	Monterey pine	23	Significant	3	Low	Multiple attachments at 6 ft; no main leader high in canopy; high canopy.
462	Monterey pine	45	Significant	2	Low	Crowded; high sparse canopy.
463	Monterey pine	36	Significant	3	Low	No tag; inaccessible; mid slope; heavy lateral limbs.
464	Monterey pine	24	Significant	3	Low	No tag; inaccessible; upright form; sparse canopy.
465	Monterey pine	17	Significant	3	Moderate	One sided to north; upright form.
466	Monterey pine	24	Significant	3	Low	Codominant at 25 ft; slight lean and one sided to west.
467	Monterey pine	12	Significant	3	Low	Suppressed; high sparse canopy.
468	Monterey pine	18	Significant	3	Low	Slight lean to west; high canopy.

Tree Assessment

Cypress Point
Moss Beach, CA
May 2022



Tree No.	Species	Trunk Diameter (in.)	Protected Tree?	Condition 1=poor 5=excellent	Suitability for Preservation	Comments
469	Monterey pine	16	Significant	3	Low	Suppressed; lean to west.
470	Monterey pine	8	No	2	Low	Suppressed; slight bow to east.
471	Monterey pine	18	Significant	4	Moderate	One sided to west; upright form.
472	Monterey pine	9	No	3	Low	Codominant at 20 ft; narrow angle attachment; narrow form.
473	Monterey pine	6	No	3	Moderate	Suppressed; slight lean to west.
474	Monterey pine	9	No	3	Low	Mid slope next to hwy 1; young tree.
475	Monterey pine	13,9,9,8,7	Significant	2	Low	Multiple attachments at base; dieback throughout canopy.
476	Monterey pine	15	Significant	3	Moderate	Good upright form; shaded branches dead.
477	Monterey pine	17	Significant	3	Moderate	Upright form; branching to ground on west.
478	Monterey pine	14	Significant	3	Low	One sided to west; upright form.
479	Monterey pine	14	Significant	3	Moderate	Crowded on NW; upright form.
480	Monterey pine	12,9	Significant	3	Low	Multiple attachments at 1 ft; twig dieback throughout canopy.
481	Monterey pine	11	No	3	Low	Sappy trunk; upright form; sparse canopy.
482	Monterey pine	9	No	3	Moderate	Slightly sparse canopy; upright form.
483	Monterey pine	10	No	2	Low	Main leader dead at top; sappy trunk.
484	Monterey pine	10	No	2	Low	No main leader at top; branch dieback in canopy.
485	Monterey cypress	26,25,22,13	Significant	4	Moderate	Multiple attachments at 3 ft; pruned for road clearance; on steep slope.
486	Monterey pine	14,9	Significant	2	Low	Multiple attachments at 2 ft; sappy trunk; pine pitch canker; top of slope.
487	Monterey pine	13	Significant	3	Low	Branches removed for bike trail; under utility lines; one sided to west.
488	Monterey pine	18	Significant	3	Low	Just N of 318; high sparse canopy; upright form.



Tree Assessment Plan

Cypress Point Moss Beach

Prepared for:
Mid Peninsula Housing Corporation
Foster City, CA

May 2022



No Scale

Notes:
Base map provided by:
BKF
Redwood City, CA

Tree locations are approximate.
Trees assessed were 6" and larger
TS = Too small



325 Ray Street
Pleasanton, CA 94566
Phone 925.484.0211
Fax 925.484.0596
www.hortscience.com

Tree Disposition

Cypress Point
Moss Beach, CA
July 1, 2022



Tree No.	Species	Trunk Diameter (in.)	Protected Tree?	Disposition	Comments
1	Monterey pine	19	Significant	Preserve	More than 30 feet from grading
2	Monterey cypress	23,13	Significant	Preserve	More than 30 feet from grading
3	Monterey cypress	22	Significant	Preserve	More than 30 feet from grading
4	Monterey cypress	21	Significant	Preserve	More than 30 feet from grading
5	Monterey cypress	25,10,6	Significant	Preserve	More than 30 feet from grading
6	Monterey cypress	18	Significant	Preserve	More than 30 feet from grading
7	Monterey cypress	18	Significant	Preserve	More than 30 feet from grading
8	Monterey pine	15	Significant	Preserve	More than 30 feet from grading
9	Monterey cypress	26	Significant	Preserve	More than 30 feet from grading
10	Monterey cypress	16	Significant	Preserve	More than 30 feet from grading
11	Monterey pine	8,6	No	Preserve	More than 30 feet from grading
12	Monterey pine	10	No	Preserve	More than 30 feet from grading
13	Monterey pine	7	No	Preserve	More than 30 feet from grading
14	Monterey cypress	15	Significant	Preserve	More than 30 feet from grading
15	Monterey cypress	15	Significant	Preserve	More than 30 feet from grading
16	Monterey cypress	12,12	Significant	Preserve	More than 30 feet from grading
17	Monterey cypress	36	Significant	Preserve	More than 30 feet from grading
18	Monterey pine	7	No	Preserve	More than 30 feet from grading
19	Monterey pine	16	Significant	Preserve	More than 30 feet from grading
20	Monterey cypress	17	Significant	Preserve	More than 30 feet from grading
21	Monterey cypress	36,27	Significant	Preserve	More than 30 feet from grading
22	Monterey cypress	33	Significant	Preserve	More than 30 feet from grading
23	Monterey cypress	24	Significant	Preserve	More than 30 feet from grading
24	Monterey cypress	29,8	Significant	Preserve	More than 30 feet from grading
25	Monterey cypress	23	Significant	Preserve	More than 30 feet from grading
26	Monterey cypress	44	Significant	Preserve	More than 30 feet from grading
27	Monterey cypress	21	Significant	Preserve	More than 30 feet from grading

Tree Disposition

Cypress Point
Moss Beach, CA
July 1, 2022



Tree No.	Species	Trunk Diameter (in.)	Protected Tree?	Disposition	Comments
28	Monterey cypress	14	Significant	Preserve	More than 30 feet from grading
29	Monterey cypress	18,5,4,4,3	Significant	Preserve	More than 30 feet from grading
30	Monterey cypress	23	Significant	Preserve	More than 30 feet from grading
31	Monterey cypress	36,26	Significant	Preserve	More than 30 feet from grading
32	Monterey cypress	18	Significant	Preserve	More than 30 feet from grading
33	Monterey cypress	35	Significant	Preserve	More than 30 feet from grading
34	Monterey cypress	14	Significant	Preserve	More than 30 feet from grading
35	Monterey pine	21	Significant	Preserve	More than 30 feet from grading
36	Monterey pine	14	Significant	Preserve	More than 30 feet from grading
37	Monterey pine	18	Significant	Preserve	More than 30 feet from grading
38	Monterey pine	21	Significant	Preserve	More than 30 feet from grading
39	Monterey pine	25	Significant	Preserve	More than 30 feet from grading
40	Monterey cypress	26	Significant	Preserve	More than 30 feet from grading
41	Monterey cypress	9	No	Preserve	More than 30 feet from grading
42	Monterey cypress	28,14	Significant	Preserve	More than 30 feet from grading
43	Monterey cypress	48	Significant	Preserve	More than 30 feet from grading
44	Monterey cypress	48	Significant	Preserve	More than 30 feet from grading
45	Monterey cypress	29	Significant	Preserve	More than 30 feet from grading
46	Monterey cypress	25	Significant	Preserve	More than 30 feet from grading
47	Monterey cypress	27	Significant	Preserve	More than 30 feet from grading
48	Monterey cypress	29	Significant	Preserve	More than 30 feet from grading
49	Monterey cypress	29	Significant	Preserve	More than 30 feet from grading
50	Monterey cypress	15	Significant	Preserve	More than 30 feet from grading
51	Monterey cypress	12	Significant	Preserve	More than 30 feet from grading
52	Monterey cypress	32	Significant	Preserve	More than 30 feet from grading
53	Monterey cypress	9	No	Preserve	More than 30 feet from grading
54	Monterey cypress	36	Significant	Preserve	More than 30 feet from grading

Tree Disposition

Cypress Point
Moss Beach, CA
July 1, 2022



Tree No.	Species	Trunk Diameter (in.)	Protected Tree?	Disposition	Comments
55	Monterey cypress	28	Significant	Preserve	More than 30 feet from grading
56	Monterey cypress	45	Significant	Preserve	More than 30 feet from grading
57	Monterey cypress	32	Significant	Preserve	More than 30 feet from grading
58	Monterey cypress	13	Significant	Preserve	More than 30 feet from grading
59	Monterey cypress	24	Significant	Preserve	More than 30 feet from grading
60	Monterey cypress	33	Significant	Preserve	More than 30 feet from grading
61	Monterey cypress	33	Significant	Preserve	More than 30 feet from grading
62	Monterey cypress	14,12	Significant	Preserve	More than 30 feet from grading
63	Monterey cypress	11	No	Preserve	More than 30 feet from grading
64	Monterey cypress	8	No	Preserve	More than 30 feet from grading
65	Monterey cypress	12	Significant	Preserve	More than 30 feet from grading
66	Monterey pine	11	No	Preserve	More than 30 feet from grading
67	Monterey cypress	34	Significant	Preserve	More than 30 feet from grading
68	Monterey cypress	11	No	Preserve	More than 30 feet from grading
69	Monterey pine	13	Significant	Preserve	More than 30 feet from grading
70	Monterey pine	18	Significant	Preserve	More than 30 feet from grading
71	Monterey pine	15,13	Significant	Preserve	More than 30 feet from grading
72	Monterey pine	25	Significant	Preserve	More than 30 feet from grading
73	Monterey pine	23,13	Significant	Preserve	More than 30 feet from grading
74	Monterey pine	31,16	Significant	Preserve	More than 30 feet from grading
75	Monterey pine	17	Significant	Preserve	More than 30 feet from grading
76	Monterey pine	28,18,10,6	Significant	Preserve	More than 30 feet from grading
77	Monterey cypress	21,20,19,19,18,16,13,13,10,7	Significant	Preserve	More than 30 feet from grading
78	Monterey cypress	28,8	Significant	Preserve	More than 30 feet from grading
79	Monterey cypress	36,19,11,7,6	Significant	Preserve	More than 30 feet from grading
80	Monterey pine	14	Significant	Preserve	More than 30 feet from grading
81	Monterey cypress	14	Significant	Preserve	More than 30 feet from grading

Tree Disposition

Cypress Point
Moss Beach, CA
July 1, 2022



Tree No.	Species	Trunk Diameter (in.)	Protected Tree?	Disposition	Comments
82	Monterey cypress	11	No	Preserve	More than 30 feet from grading
83	Monterey cypress	14	Significant	Preserve	More than 30 feet from grading
84	Monterey cypress	22,6	Significant	Preserve	More than 30 feet from grading
85	Monterey cypress	13	Significant	Preserve	More than 30 feet from grading
86	Monterey pine	14	Significant	Preserve	More than 30 feet from grading
87	Monterey cypress	26,26,18,14,14,12,11,9,8,7,7,7	Significant	Preserve	More than 30 feet from grading
88	Monterey cypress	16,13	Significant	Preserve	More than 30 feet from grading
89	Monterey cypress	34	Significant	Preserve	More than 30 feet from grading
90	Monterey cypress	28	Significant	Preserve	More than 30 feet from grading
91	Monterey cypress	6	No	Preserve	More than 30 feet from grading
92	Monterey cypress	6	No	Preserve	More than 30 feet from grading
93	Monterey cypress	29	Significant	Preserve	More than 30 feet from grading
94	Monterey cypress	32	Significant	Preserve	More than 30 feet from grading
95	Monterey cypress	32	Significant	Preserve	More than 30 feet from grading
96	Monterey cypress	23,22,17,17,16,10	Significant	Preserve	More than 30 feet from grading
97	Monterey cypress	25	Significant	Preserve	More than 30 feet from grading
98	Monterey cypress	26	Significant	Preserve	More than 30 feet from grading
99	Monterey cypress	25	Significant	Preserve	More than 30 feet from grading
100	Monterey cypress	24	Significant	Preserve	More than 30 feet from grading
101	Monterey cypress	36	Significant	Remove	25 feet from grading
102	Monterey cypress	16	Significant	Remove	15 feet from grading
103	Monterey cypress	27	Significant	Remove	5 feet from grading
104	Monterey pine	22	Significant	Remove	Within grading
105	Monterey pine	24	Significant	Remove	Within grading
106	Monterey cypress	40,10,10,7,7,6,5	Significant	Remove	Within grading
107	Monterey pine	14	Significant	Remove	Within grading
108	Monterey cypress	42	Significant	Remove	9 feet from grading

Tree Disposition

Cypress Point
Moss Beach, CA
July 1, 2022



Tree No.	Species	Trunk Diameter (in.)	Protected Tree?	Disposition	Comments
109	Monterey cypress	48,36,26,20,18,17,16,12,12	Significant	Remove	11 feet from grading
110	Monterey pine	10	No	Remove	Within grading
111	Monterey cypress	48	Significant	Remove	5 feet from grading
112	Monterey cypress	26,24,20,15,15,12,10,10,9	Significant	Preserve	More than 30 feet from grading
113	Monterey cypress	32	Significant	Preserve	More than 30 feet from grading
114	Monterey cypress	32	Significant	Preserve	More than 30 feet from grading
115	Monterey cypress	18,14,10,9,6,5	Significant	Preserve	More than 30 feet from grading
116	Monterey cypress	9	No	Preserve	More than 30 feet from grading
117	Monterey cypress	30	Significant	Preserve	More than 30 feet from grading
118	Monterey pine	26	Significant	Preserve	More than 30 feet from grading
119	Monterey pine	25	Significant	Preserve	More than 30 feet from grading
120	Monterey pine	31	Significant	Preserve	More than 30 feet from grading
121	Monterey cypress	42	Significant	Preserve	More than 30 feet from grading
122	Monterey cypress	28	Significant	Preserve	More than 30 feet from grading
123	Monterey cypress	35	Significant	Preserve	More than 30 feet from grading
124	Monterey pine	7,6	No	Preserve	More than 30 feet from grading
125	Monterey cypress	6	No	Preserve	More than 30 feet from grading
126	Monterey cypress	12,4	Significant	Preserve	More than 30 feet from grading
127	Monterey pine	17	Significant	Remove	Within grading
128	Monterey pine	7	No	Remove	Within grading
129	Monterey pine	10	No	Remove	Within grading
130	Monterey pine	8,5	No	Remove	Within grading
131	Monterey pine	11,7	Significant	Remove	Within grading
132	Monterey pine	9	No	Remove	Within grading
133	Monterey pine	35,28,17	Significant	Remove	Within grading
134	Monterey pine	14,11	Significant	Remove	Within grading
135	Monterey pine	12	Significant	Remove	Within grading

Tree Disposition

Cypress Point
Moss Beach, CA
July 1, 2022



Tree No.	Species	Trunk Diameter (in.)	Protected Tree?	Disposition	Comments
136	Monterey pine	10	No	Remove	Within grading
137	Monterey pine	23	Significant	Remove	Within grading
138	Monterey pine	18	Significant	Remove	Within grading
139	Monterey pine	24	Significant	Remove	Within grading
140	Monterey pine	18	Significant	Remove	Within grading
141	Monterey pine	14	Significant	Remove	Within grading
142	Monterey pine	8	No	Remove	Within grading
143	Monterey pine	10,6,5	Significant	Remove	Within grading
144	Monterey pine	6	No	Remove	Within grading
145	Monterey pine	48,28,28,22,20,16	Significant	Remove	Within grading
146	Monterey pine	11	No	Remove	6 feet from grading
147	Monterey cypress	28,17,13,10,10,8,8,8	Significant	Remove	Within grading
148	Monterey cypress	45,38,26,14,13,13	Significant	Preserve	More than 30 feet from grading
149	Monterey pine	7	No	Preserve	More than 30 feet from grading
150	Monterey pine	16	Significant	Remove	12 feet from grading
151	Monterey cypress	36,14,10	Significant	Preserve	25 feet from grading
152	Monterey cypress	32	Significant	Preserve	27 feet from grading
153	Monterey cypress	31	Significant	Preserve	More than 30 feet from grading
154	Monterey cypress	17	Significant	Preserve	More than 30 feet from grading
155	Monterey cypress	37,9	Significant	Preserve	More than 30 feet from grading
156	Monterey cypress	18	Significant	Preserve	More than 30 feet from grading
157	Monterey cypress	26,7	Significant	Preserve	More than 30 feet from grading
158	Monterey cypress	32	Significant	Preserve	More than 30 feet from grading
159	Monterey cypress	13,9	Significant	Preserve	More than 30 feet from grading
160	Monterey cypress	36	Significant	Preserve	28 feet from grading
161	Monterey cypress	34	Significant	Preserve	27 feet from grading
162	Monterey cypress	29	Significant	Preserve	24 feet from grading

Tree Disposition

Cypress Point
Moss Beach, CA
July 1, 2022



Tree No.	Species	Trunk Diameter (in.)	Protected Tree?	Disposition	Comments
163	Monterey cypress	13,7	Significant	Preserve	23 feet from grading
164	Monterey cypress	14,	Significant	Preserve	22 feet from grading
165	Monterey cypress	28,13	Significant	Preserve	21 feet from grading
166	Monterey cypress	21,12	Significant	Preserve	23 feet from grading
167	Italian stone pine	13,12,11,10	Significant	Remove	Within grading
168	Monterey cypress	19,19,15,14,14,13,12,12,10,9,7,7	Significant	Remove	Within grading
169	Monterey pine	25	Significant	Remove	Within grading
170	Monterey pine	8	No	Remove	Within grading
171	Monterey pine	9	No	Remove	Within grading
172	Monterey pine	14	Significant	Remove	Within grading
173	Monterey pine	11	No	Remove	Within grading
174	Monterey pine	14	Significant	Remove	Within grading
175	Monterey pine	8	No	Remove	Within grading
176	Monterey pine	18	Significant	Remove	Within grading
177	Monterey pine	16	Significant	Remove	Within grading
178	Monterey pine	17	Significant	Remove	Within grading
179	Monterey pine	17	Significant	Remove	Within grading
180	Monterey pine	17	Significant	Remove	Within grading
181	Monterey pine	16	Significant	Remove	Within grading
182	Monterey pine	12	Significant	Remove	Within grading
183	Monterey pine	8	No	Remove	Within grading
184	Monterey pine	15	Significant	Remove	Within grading
185	Monterey pine	15	Significant	Remove	Within grading
186	Monterey pine	11	No	Remove	Within grading
187	Monterey pine	9	No	Remove	Within grading
188	Monterey pine	11	No	Remove	Within grading
189	Monterey cypress	21,16,15,15,14,10,10	Significant	Remove	Within grading

Tree Disposition

Cypress Point
Moss Beach, CA
July 1, 2022



Tree No.	Species	Trunk Diameter (in.)	Protected Tree?	Disposition	Comments
190	Monterey pine	15	Significant	Remove	Within grading
191	Monterey pine	8	No	Remove	Within grading
192	Monterey pine	10	No	Remove	Within grading
193	Monterey pine	14	Significant	Remove	Within grading
194	Monterey pine	14	Significant	Remove	Within grading
195	Monterey pine	13	Significant	Remove	Within grading
196	Monterey pine	11	No	Remove	Within grading
197	Monterey pine	15	Significant	Remove	Within grading
198	Monterey cypress	28,24,16,12,9	Significant	Remove	Within grading
199	Monterey pine	8	No	Remove	Within grading
200	Monterey pine	6	No	Remove	Within grading
201	Monterey pine	14,8	Significant	Remove	Within grading
202	Monterey pine	14	Significant	Remove	Within grading
203	Monterey pine	6	No	Remove	Within grading
204	Monterey pine	7	No	Remove	Within grading
205	Monterey pine	10	No	Remove	Within grading
206	Monterey pine	9	No	Remove	Within grading
207	Monterey pine	13	Significant	Remove	Within grading
208	Monterey pine	11	No	Remove	Within grading
209	Monterey pine	13	Significant	Remove	Within grading
210	Monterey pine	18	Significant	Remove	Within grading
211	Monterey cypress	24,24,22,18,13,13,12,8	Significant	Remove	Within grading
212	Monterey pine	9	No	Remove	Within grading
213	Monterey pine	16,11	Significant	Remove	Within grading
214	Monterey pine	17,15,8	Significant	Remove	Within grading
215	Monterey cypress	10,5,5,5,5	Significant	Remove	Within grading
216	Monterey pine	9	No	Remove	Within grading

Tree Disposition

Cypress Point
Moss Beach, CA
July 1, 2022



Tree No.	Species	Trunk Diameter (in.)	Protected Tree?	Disposition	Comments
217	Monterey pine	22,18	Significant	Remove	Within grading
218	Monterey cypress	60	Significant	Remove	Within grading
219	Monterey pine	12	Significant	Remove	Within grading
220	Monterey pine	9	No	Remove	Within grading
221	Monterey cypress	9,4,3,2	No	Remove	Within grading
222	Monterey pine	16,10,9,8,6	Significant	Remove	Within grading
223	Monterey pine	16	Significant	Remove	Within grading
224	Monterey pine	19	Significant	Remove	Within grading
225	Monterey pine	18	Significant	Remove	Within grading
226	Monterey cypress	18	Significant	Remove	Within grading
227	Monterey cypress	8	No	Remove	Within grading
228	Monterey pine	13	Significant	Remove	Within grading
229	Monterey cypress	17,7	Significant	Remove	Within grading
230	Monterey pine	8	No	Remove	Within grading
231	Monterey pine	13,9	Significant	Remove	Within grading
232	Monterey pine	7	No	Remove	4 feet from grading
233	Monterey cypress	13,7,4,4	Significant	Preserve	23 feet from grading
234	Monterey cypress	9,7,4	Significant	Preserve	25 feet from grading
235	Monterey cypress	37	Significant	Preserve	14 feet from grading
236	Monterey cypress	17	Significant	Preserve	More than 30 feet from grading
237	Monterey cypress	22	Significant	Preserve	More than 30 feet from grading
238	Monterey cypress	38	Significant	Preserve	More than 30 feet from grading
239	Monterey cypress	18	Significant	Preserve	More than 30 feet from grading
240	Monterey cypress	22	Significant	Preserve	More than 30 feet from grading
241	Monterey cypress	24,13,10,8,7,6,4	Significant	Preserve	More than 30 feet from grading
242	Italian stone pine	6	No	Remove	Within grading
243	Monterey pine	10,9	Significant	Remove	Within grading

Tree Disposition

Cypress Point
Moss Beach, CA
July 1, 2022



Tree No.	Species	Trunk Diameter (in.)	Protected Tree?	Disposition	Comments
244	Monterey pine	6,3	No	Remove	2 feet from grading
245	Monterey pine	6	No	Remove	Within grading
246	Monterey pine	19	Significant	Remove	2 feet from grading
247	Monterey pine	7,4	No	Remove	Within grading
248	Monterey pine	14,11	Significant	Remove	Within grading
249	Monterey cypress	19,18,12,12,7,6,6,5,5,4,4,4,4	Significant	Remove	Within grading
250	Monterey pine	18,15,8	Significant	Preserve	More than 30 feet from grading
251	Monterey pine	22	Significant	Preserve	More than 30 feet from grading
252	Monterey pine	16	Significant	Preserve	More than 30 feet from grading
253	Monterey pine	21,11	Significant	Remove	18 feet from grading
254	Monterey pine	34,12	Significant	Preserve	More than 30 feet from grading
255	Monterey pine	7	No	Preserve	More than 30 feet from grading
256	Monterey pine	8	No	Preserve	More than 30 feet from grading
257	Monterey pine	7	No	Preserve	More than 30 feet from grading
258	Monterey pine	8	No	Preserve	28 feet from grading
259	Monterey pine	10	No	Preserve	More than 30 feet from grading
260	Monterey pine	8	No	Preserve	More than 30 feet from grading
261	Monterey pine	8	No	Preserve	More than 30 feet from grading
262	Monterey pine	12	Significant	Preserve	More than 30 feet from grading
263	Monterey cypress	38	Significant	Preserve	More than 30 feet from grading
264	Monterey pine	6	No	Preserve	More than 30 feet from grading
265	Monterey pine	15	Significant	Preserve	More than 30 feet from grading
266	Monterey pine	7	No	Preserve	More than 30 feet from grading
267	Monterey pine	40	Significant	Preserve	More than 30 feet from grading
268	Monterey pine	13	Significant	Preserve	More than 30 feet from grading
269	Monterey pine	17	Significant	Preserve	More than 30 feet from grading
270	Italian stone pine	6,5,4,4,4	No	Preserve	More than 30 feet from grading

Tree Disposition

Cypress Point
Moss Beach, CA
July 1, 2022



Tree No.	Species	Trunk Diameter (in.)	Protected Tree?	Disposition	Comments
271	Monterey pine	7,5	No	Preserve	More than 30 feet from grading
272	Monterey pine	24,10,7,5	Significant	Preserve	More than 30 feet from grading
273	Monterey pine	22,13,11	Significant	Remove	5 feet from grading
274	Monterey pine	26,10,6	Significant	Remove	Within grading
275	Monterey pine	25,9	Significant	Remove	Within grading
276	Monterey pine	9,8	Significant	Remove	Within grading
277	Monterey pine	20	Significant	Remove	Within grading
278	Monterey pine	6	No	Remove	Within grading
279	Monterey pine	8	No	Remove	Within grading
280	Monterey pine	11	No	Remove	Within grading
281	Monterey pine	7	No	Remove	Within grading
282	Monterey pine	7	No	Remove	Within grading
283	Monterey pine	7	No	Remove	Within grading
284	Monterey pine	22	Significant	Remove	Within grading
285	Monterey pine	10	No	Remove	Within grading
286	Monterey cypress	26,13,13,6,6	Significant	Remove	Within grading
287	Monterey cypress	38,30,28,26,13	Significant	Remove	Within grading
288	Monterey cypress	15,15	Significant	Remove	Within grading
289	Monterey cypress	22,20	Significant	Remove	Within grading
290	Monterey cypress	15	Significant	Remove	Within grading
291	Monterey cypress	14	Significant	Remove	Within grading
292	Monterey cypress	30,22,20	Significant	Remove	Within grading
293	Monterey cypress	34,30,28,27,24,12	Significant	Remove	Within grading
294	Monterey cypress	14	Significant	Remove	Within grading
295	Monterey pine	7	No	Remove	Within grading
296	Monterey cypress	6	No	Remove	Within grading
297	Monterey cypress	6,4	No	Remove	Within grading

Tree Disposition

Cypress Point
Moss Beach, CA
July 1, 2022



Tree No.	Species	Trunk Diameter (in.)	Protected Tree?	Disposition	Comments
298	Monterey pine	8	No	Remove	Within grading
299	Monterey cypress	7	No	Remove	Within grading
300	Monterey cypress	9	No	Remove	Within grading
301	Monterey pine	8	No	Remove	Within grading
302	Monterey pine	13	Significant	Remove	Within grading
303	Monterey pine	14	Significant	Remove	Within grading
304	Monterey cypress	38	Significant	Remove	Within grading
305	Monterey pine	22	Significant	Remove	Within grading
306	Monterey pine	7	No	Remove	Within grading
307	Monterey cypress	24	Significant	Remove	Within grading
308	Monterey cypress	29	Significant	Remove	Within grading
309	Monterey cypress	68	Significant	Remove	Within grading
310	Monterey cypress	25	Significant	Remove	Within grading
311	Monterey cypress	18,15,13,13,13,12,12,12	Significant	Remove	Within grading
312	Monterey cypress	20,13,6,6,6,5	Significant	Remove	Within grading
313	Monterey pine	15	Significant	Remove	Within grading
314	Monterey cypress	22,8,5,4	Significant	Remove	Within grading
315	Monterey pine	24	Significant	Remove	Within grading
316	Monterey pine	15	Significant	Remove	Within grading
317	Monterey pine	14	Significant	Remove	Within grading
318	Monterey pine	8	No	Remove	Within grading
319	Monterey pine	25	Significant	Remove	Within grading
320	Monterey pine	28	Significant	Remove	Within grading
321	Monterey pine	10	No	Remove	Within grading
322	Monterey pine	18	Significant	Remove	Within grading
323	Monterey pine	25	Significant	Remove	Within grading
324	Monterey pine	15,14,13	Significant	Remove	Within grading

Tree Disposition

Cypress Point
Moss Beach, CA
July 1, 2022



Tree No.	Species	Trunk Diameter (in.)	Protected Tree?	Disposition	Comments
325	Monterey pine	16	Significant	Remove	Within grading
326	Monterey cypress	15,14,7,6,4,4	Significant	Remove	Within grading
327	Monterey cypress	9,6	No	Remove	Within grading
328	Monterey pine	15	Significant	Remove	Within grading
329	Monterey pine	17	Significant	Remove	Within grading
330	Monterey pine	6	No	Remove	Within grading
331	Monterey cypress	6,5	No	Remove	Within grading
332	Monterey cypress	9,4	No	Remove	Within grading
333	Monterey pine	16	Significant	Remove	Within grading
334	Monterey cypress	8,5,5,4,3	Significant	Remove	Within grading
335	Monterey pine	21	Significant	Remove	Within grading
336	Monterey pine	9	No	Remove	Within grading
337	Monterey cypress	10	No	Remove	Within grading
338	Monterey pine	12	Significant	Remove	Within grading
339	Monterey pine	7	No	Remove	Within grading
340	Monterey pine	10	No	Remove	Within grading
341	Monterey pine	12	Significant	Remove	Within grading
342	Monterey cypress	20,10,7,7,6,6	Significant	Remove	Within grading
343	Monterey cypress	48,25,14,12,12	Significant	Remove	Within grading
344	Monterey pine	19	Significant	Remove	Within grading
345	Monterey pine	17	Significant	Remove	Within grading
346	Monterey pine	12	Significant	Remove	Within grading
347	Monterey pine	16	Significant	Remove	Within grading
348	Monterey pine	6	No	Remove	Within grading
349	Monterey pine	8	No	Remove	Within grading
350	Monterey pine	6	No	Remove	Within grading
351	Monterey pine	7	No	Remove	Within grading

Tree Disposition

Cypress Point
Moss Beach, CA
July 1, 2022



Tree No.	Species	Trunk Diameter (in.)	Protected Tree?	Disposition	Comments
352	Monterey pine	10	No	Remove	Within grading
353	Monterey pine	6	No	Remove	Within grading
354	Monterey cypress	7	No	Remove	Within grading
355	Monterey pine	12	Significant	Remove	Within grading
356	Monterey pine	16	Significant	Remove	Within grading
357	Monterey cypress	9,8,4	Significant	Remove	Within grading
358	Monterey cypress	9	No	Remove	Within grading
359	Monterey pine	7	No	Remove	Within grading
360	Monterey pine	10	No	Remove	Within grading
361	Monterey cypress	6	No	Remove	Within grading
362	Monterey pine	13,11	Significant	Preserve	More than 30 feet from grading
363	Monterey cypress	11	No	Preserve	20 feet from grading
364	Monterey cypress	6,6,5,5,4,4	Significant	Preserve	19 feet from grading
365	Monterey cypress	8,6,5,4	Significant	Preserve	13 feet from grading
366	Monterey cypress	7,6,4,4,3,3	Significant	Remove	3 feet from grading
367	Monterey cypress	6,4,2,2	No	Remove	2 feet from grading
368	Monterey cypress	52	Significant	Remove	2 feet from grading
369	Monterey pine	18	Significant	Remove	Within grading
370	Monterey pine	12	Significant	Remove	Within grading
371	Monterey pine	20,18	Significant	Remove	Within grading
372	Monterey pine	8,7,5	Significant	Remove	Within grading
373	Monterey pine	10	No	Remove	Within grading
374	Monterey pine	9	No	Remove	Within grading
375	Monterey pine	24	Significant	Remove	Within grading
376	Monterey pine	45	Significant	Preserve	More than 30 feet from grading
377	Monterey pine	6,3	No	Remove	Within grading
378	Monterey pine	22,9,8,6,6	Significant	Remove	Within grading

Tree Disposition

Cypress Point
Moss Beach, CA
July 1, 2022



Tree No.	Species	Trunk Diameter (in.)	Protected Tree?	Disposition	Comments
379	Monterey pine	12	Significant	Remove	Within grading
380	Monterey pine	22	Significant	Remove	Within grading
381	Monterey pine	9	No	Remove	Within grading
382	Monterey pine	24	Significant	Remove	Within grading
383	Monterey pine	6	No	Remove	Within grading
384	Monterey pine	7	No	Remove	Within grading
385	Monterey pine	6	No	Remove	Within grading
386	Monterey pine	7	No	Remove	Within grading
387	Monterey pine	6	No	Remove	Within grading
388	Monterey pine	7	No	Remove	Within grading
389	Monterey pine	34,18,17,12,10	Significant	Remove	Within grading
390	Monterey pine	36	Significant	Remove	Within grading
391	Monterey pine	36	Significant	Remove	4 feet from grading
392	Monterey pine	13	Significant	Remove	2 feet from grading
393	Monterey pine	26	Significant	Remove	Within grading
394	Monterey pine	17	Significant	Remove	19 feet from grading
395	Monterey pine	16	Significant	Remove	17 feet from grading
396	Monterey pine	17	Significant	Remove	10 feet from grading
397	Monterey pine	25	Significant	Remove	11 feet from grading
398	Monterey pine	19	Significant	Remove	16 feet from grading
399	Monterey pine	16	Significant	Preserve	More than 30 feet from grading
400	Monterey pine	17	Significant	Preserve	More than 30 feet from grading
401	Monterey pine	13	Significant	Remove	17 feet from grading
402	Monterey pine	26	Significant	Remove	12 feet from grading
403	Monterey pine	20	Significant	Preserve	24 feet from grading
404	Monterey pine	13	Significant	Remove	Within grading
405	Monterey pine	19	Significant	Remove	Within grading

Tree Disposition

Cypress Point
Moss Beach, CA
July 1, 2022



Tree No.	Species	Trunk Diameter (in.)	Protected Tree?	Disposition	Comments
406	Monterey pine	17	Significant	Remove	Within grading
407	Monterey pine	19,10,7	Significant	Remove	Within grading
408	Monterey pine	20	Significant	Remove	Within grading
409	Monterey pine	24	Significant	Remove	Within grading
410	Monterey pine	16	Significant	Remove	Within grading
411	Monterey pine	10	No	Remove	Within grading
412	Monterey pine	40	Significant	Remove	Within grading
413	Myoporum	10	No	Remove	16 feet from grading, invasive
414	Monterey pine	45	Significant	Remove	Within grading
415	Monterey pine	14	Significant	Remove	Within grading
416	Monterey pine	27	Significant	Remove	Within grading
417	Monterey pine	17	Significant	Remove	Within grading
418	Monterey pine	22	Significant	Remove	Within grading
419	Monterey pine	35	Significant	Remove	Within grading
420	Monterey pine	44	Significant	Remove	Within grading
421	Monterey pine	38	Significant	Remove	Within grading
422	Monterey pine	25,16	Significant	Remove	Within grading
423	Monterey pine	38	Significant	Remove	21 feet from grading
424	Monterey pine	15	Significant	Remove	22 feet from grading
425	Monterey pine	28	Significant	Remove	19 feet from grading
426	Monterey pine	10	No	Remove	Within grading
427	Monterey pine	6	No	Remove	Within grading
428	Monterey pine	8	No	Remove	Within grading
429	Monterey pine	7	No	Remove	Within grading
430	Monterey cypress	8	No	Remove	Within grading
431	Monterey pine	10	No	Remove	Within grading
432	Monterey pine	7	No	Remove	Within grading

Tree Disposition

Cypress Point
Moss Beach, CA
July 1, 2022



Tree No.	Species	Trunk Diameter (in.)	Protected Tree?	Disposition	Comments
433	Monterey cypress	8	No	Remove	Within grading
434	Monterey pine	7	No	Remove	Within grading
435	Monterey pine	18	Significant	Remove	Within grading
436	Monterey cypress	8	No	Remove	Within grading
437	Monterey pine	9	No	Remove	Within grading
438	Monterey cypress	24,18,15,12,12,6,6,6	Significant	Remove	Within grading
439	Monterey pine	20	Significant	Remove	Within grading
440	Monterey cypress	19	Significant	Remove	Within grading
441	Monterey cypress	15	Significant	Remove	Within grading
442	Monterey pine	16	Significant	Remove	Within grading
443	Monterey pine	23	Significant	Remove	Within grading
444	Monterey pine	16	Significant	Remove	Within grading
445	Monterey pine	10	No	Remove	Within grading
446	Monterey cypress	44	Significant	Preserve	17 feet from grading
447	Monterey pine	30	Significant	Remove	11 feet from grading
448	Monterey pine	13	Significant	Remove	27 feet from grading
449	Monterey pine	18	Significant	Preserve	More than 30 feet from grading
450	Monterey pine	10	No	Remove	4 feet from grading
451	Monterey pine	14	Significant	Remove	12 feet from grading
452	Monterey pine	18	Significant	Remove	10 feet from grading
453	Monterey pine	6	No	Remove	6 feet from grading
454	Monterey pine	8	No	Remove	1 foot from grading
455	Monterey pine	18	Significant	Remove	Within grading
456	Monterey pine	18	Significant	Remove	16 feet from grading
457	Monterey pine	33,28,24	Significant	Remove	1 foot from grading
458	Monterey pine	13	Significant	Preserve	More than 30 feet from grading
459	Monterey pine	12	Significant	Preserve	24 feet from grading

Tree Disposition

Cypress Point
Moss Beach, CA
July 1, 2022



Tree No.	Species	Trunk Diameter (in.)	Protected Tree?	Disposition	Comments
460	Monterey pine	6	No	Preserve	15 feet from grading
461	Monterey pine	23	Significant	Remove	5 feet from grading
462	Monterey pine	45	Significant	Remove	5 feet from grading
463	Monterey pine	36	Significant	Preserve	More than 30 feet from grading
464	Monterey pine	24	Significant	Preserve	More than 30 feet from grading
465	Monterey pine	17	Significant	Remove	Within grading
466	Monterey pine	24	Significant	Remove	Within grading
467	Monterey pine	12	Significant	Remove	Within grading
468	Monterey pine	18	Significant	Remove	Within grading
469	Monterey pine	16	Significant	Remove	Within grading
470	Monterey pine	8	No	Remove	Within grading
471	Monterey pine	18	Significant	Remove	Within grading
472	Monterey pine	9	No	Remove	Within grading
473	Monterey pine	6	No	Remove	Within grading
474	Monterey pine	9	No	Preserve	More than 30 feet from grading
475	Monterey pine	13,9,9,8,7	Significant	Preserve	More than 30 feet from grading
476	Monterey pine	15	Significant	Preserve	More than 30 feet from grading
477	Monterey pine	17	Significant	Preserve	More than 30 feet from grading
478	Monterey pine	14	Significant	Preserve	More than 30 feet from grading
479	Monterey pine	14	Significant	Preserve	More than 30 feet from grading
480	Monterey pine	12,9	Significant	Preserve	More than 30 feet from grading
481	Monterey pine	11	No	Preserve	More than 30 feet from grading
482	Monterey pine	9	No	Preserve	More than 30 feet from grading
483	Monterey pine	10	No	Preserve	More than 30 feet from grading
484	Monterey pine	10	No	Preserve	More than 30 feet from grading
485	Monterey cypress	26,25,22,13	Significant	Preserve	More than 30 feet from grading
486	Monterey pine	14,9	Significant	Preserve	More than 30 feet from grading

Tree Disposition

Cypress Point
Moss Beach, CA
July 1, 2022



Tree No.	Species	Trunk Diameter (in.)	Protected Tree?	Disposition	Comments
487	Monterey pine	13	Significant	Preserve	21 feet from grading
488	Monterey pine	18	Significant	Remove	Within grading