

COUNTY OF SAN MATEO



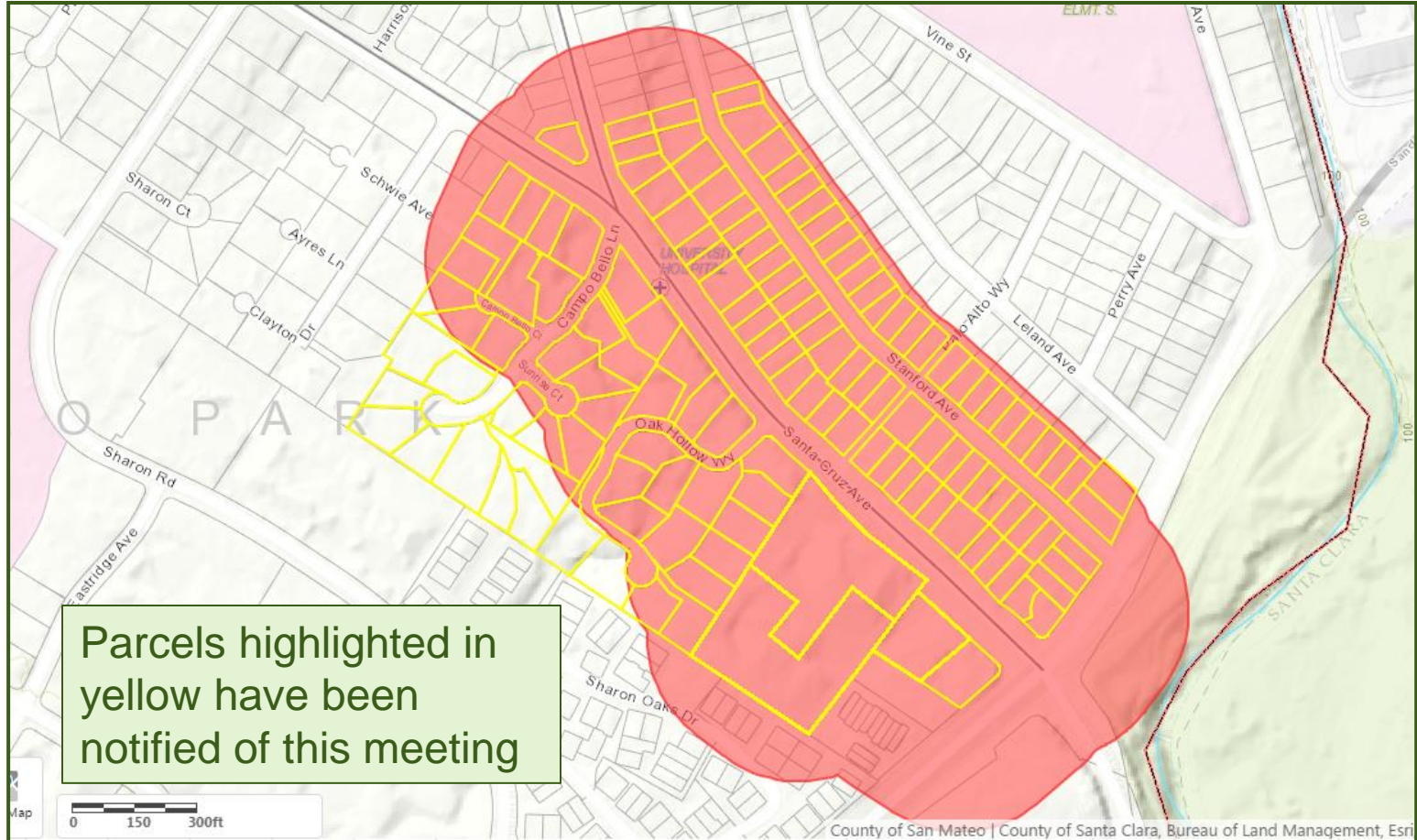
Proposed Parking Restrictions on Santa Cruz Avenue

Joe Lo Coco

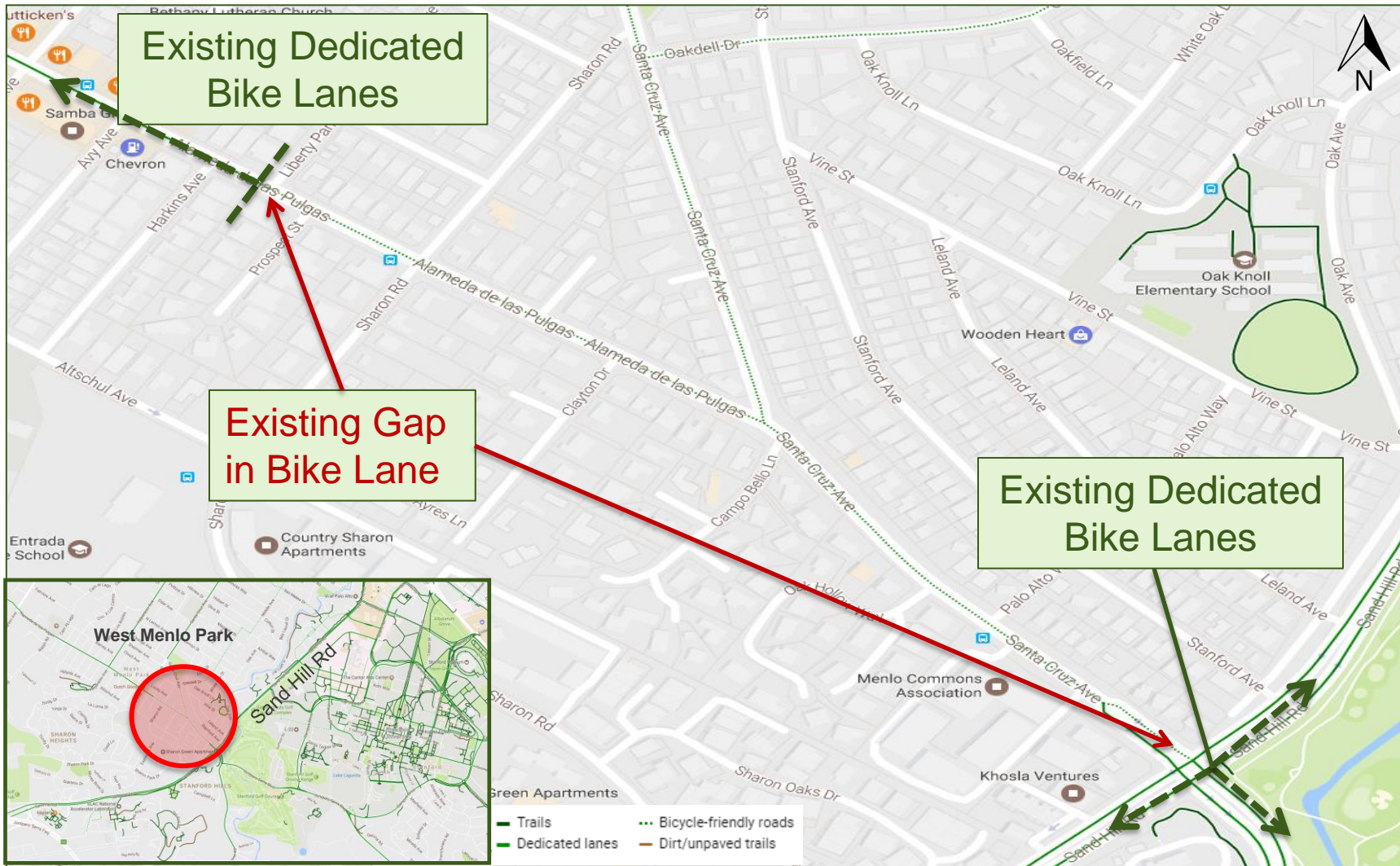
January 23, 2017



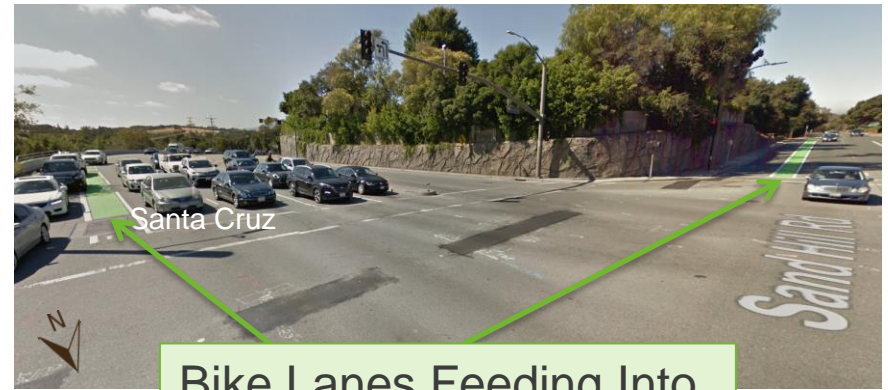
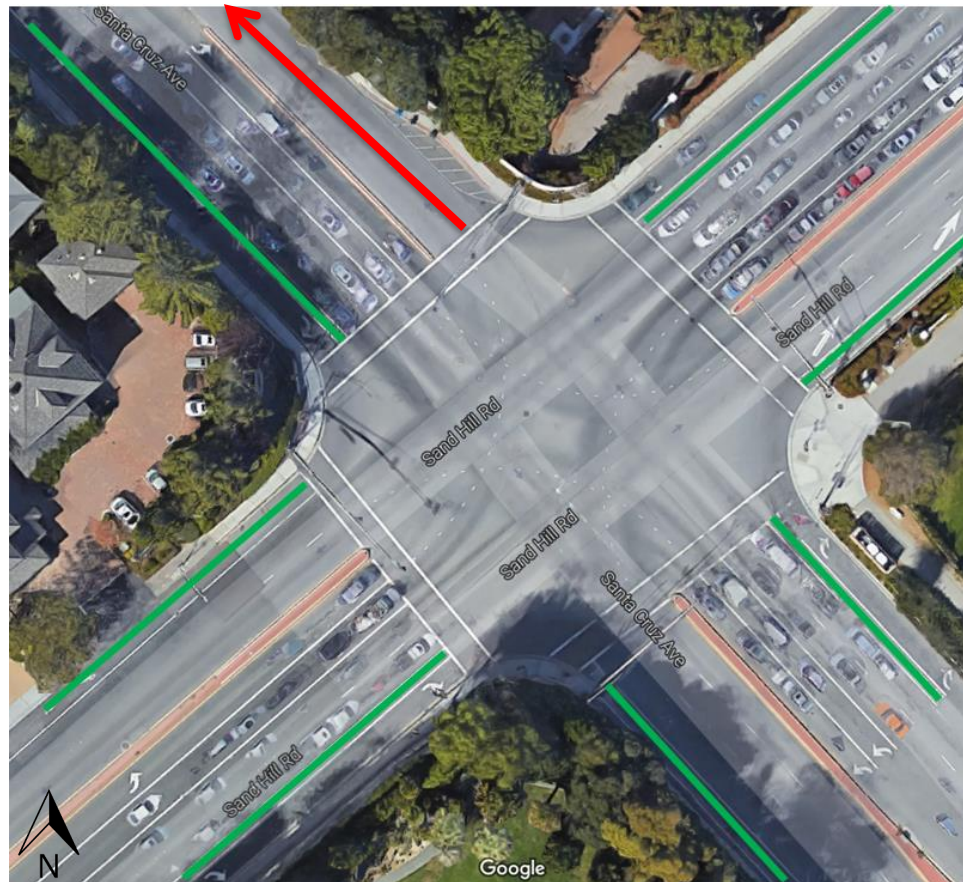
Who Did We Notify?



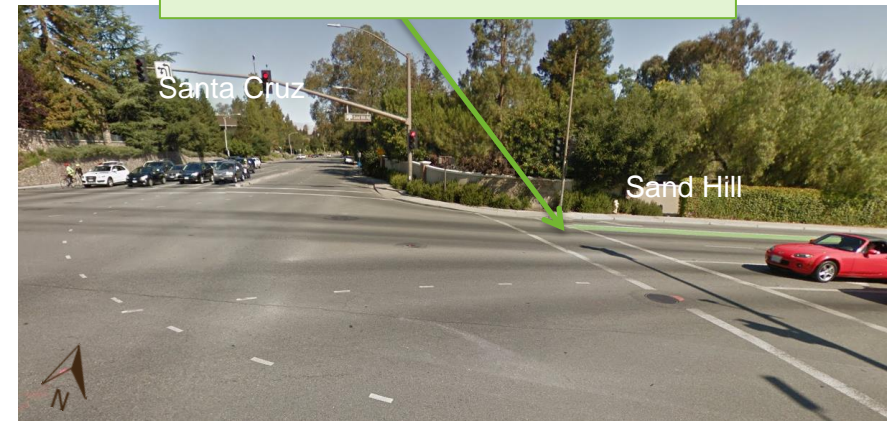
Why Do We Need This Change?



Gap in Bike Lane Through Commute Corridor



Bike Lanes Feeding Into Santa Cruz Avenue





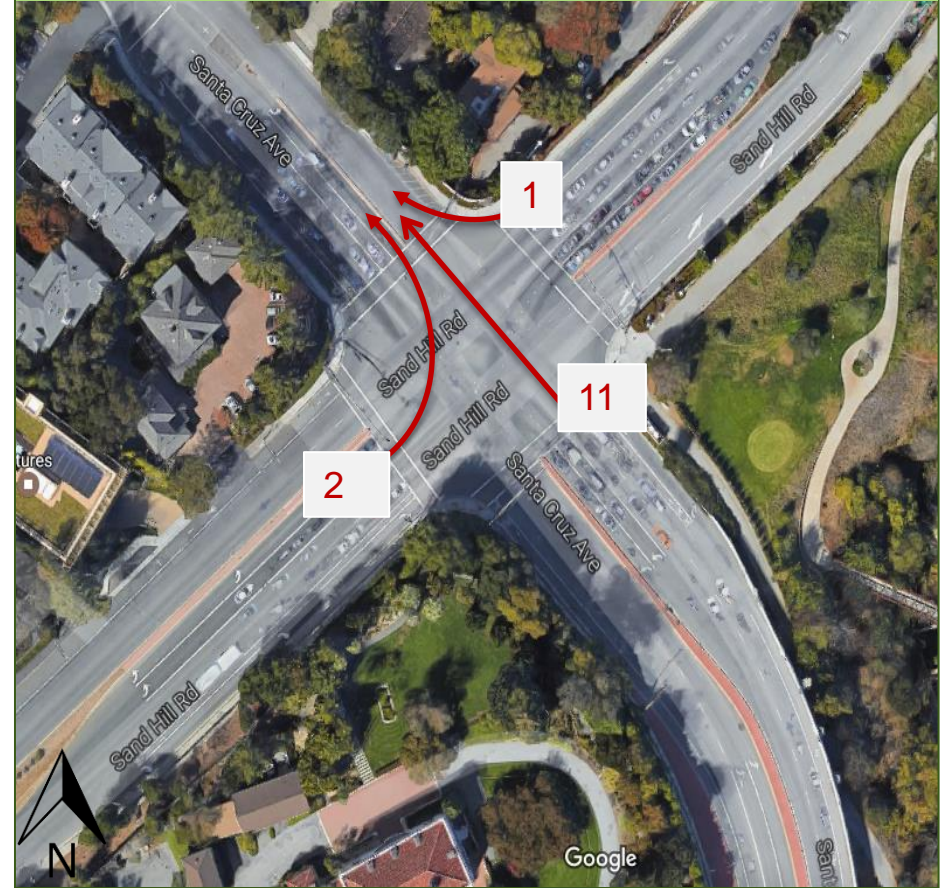
Peak 15 minute Morning Cyclists



Southbound Santa Cruz Avenue

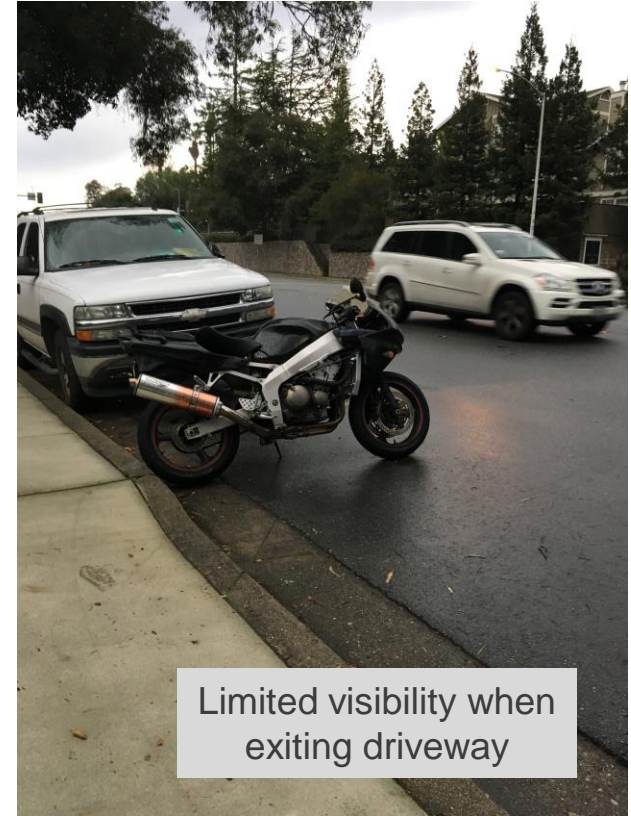


Northbound Santa Cruz Avenue



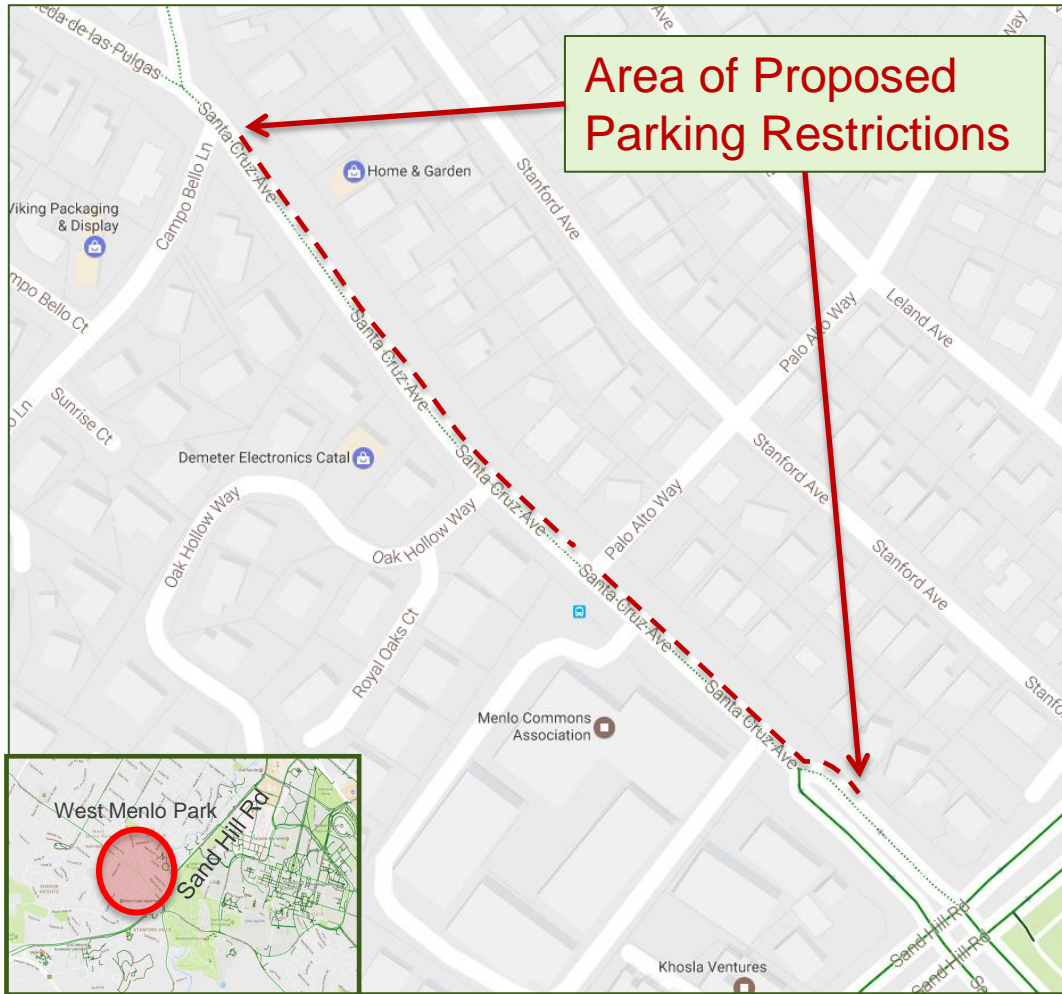
Current Conditions – Shared Right Lane

- Does not promote the safety of cyclists, motorists, or residents



Limited visibility when exiting driveway

What Are We Proposing



- No Parking Zone
 - 8am-6pm Monday–Friday
- No Restrictions
 - weekends or evenings
- 26 Parking Stalls Impacted

San Mateo County Parking Zone Proposal

To balance residents need for parking with the need to enhance safety for cyclists as well as motorists along this section of the commuter corridor we would like to eliminate street parking from 8am to 6pm Monday through Friday.

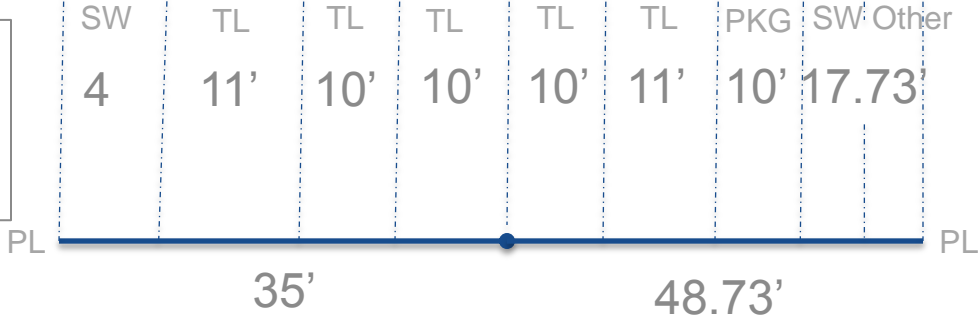
Benefits

- Increase Safety for Cyclists
- Increase Safety for Motorists
- Enhance visibility for residents exiting driveways on Santa Cruz Ave.

Existing Roadway Dimensions



SW = Sidewalk
 TL = Travel Lane
 PL = Property Line
 PKG = Parking Lane

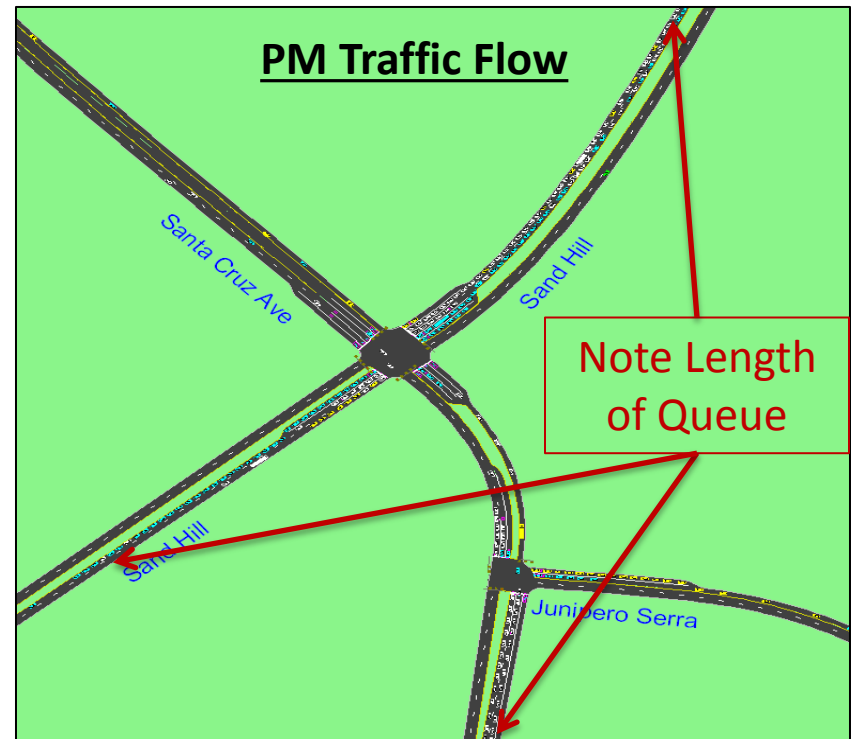
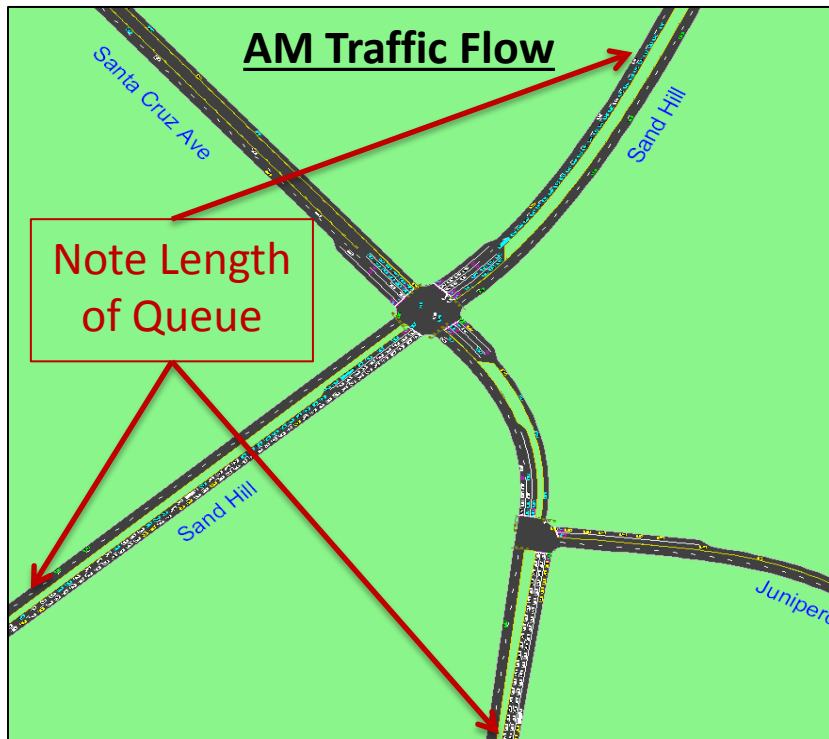


Roadway Dimensions Vary Along Santa Cruz Avenue

What Have We Tried?

- Road Diet Modeling

- DPW modeled the impact of reducing a northbound travel lane to create a dedicated bike lane on Santa Cruz Avenue
- Models indicated severe congestion would be imposed upon the intersection with Sand Hill Road making this infeasible.



Input and Questions

COUNTY OF SAN MATEO

