

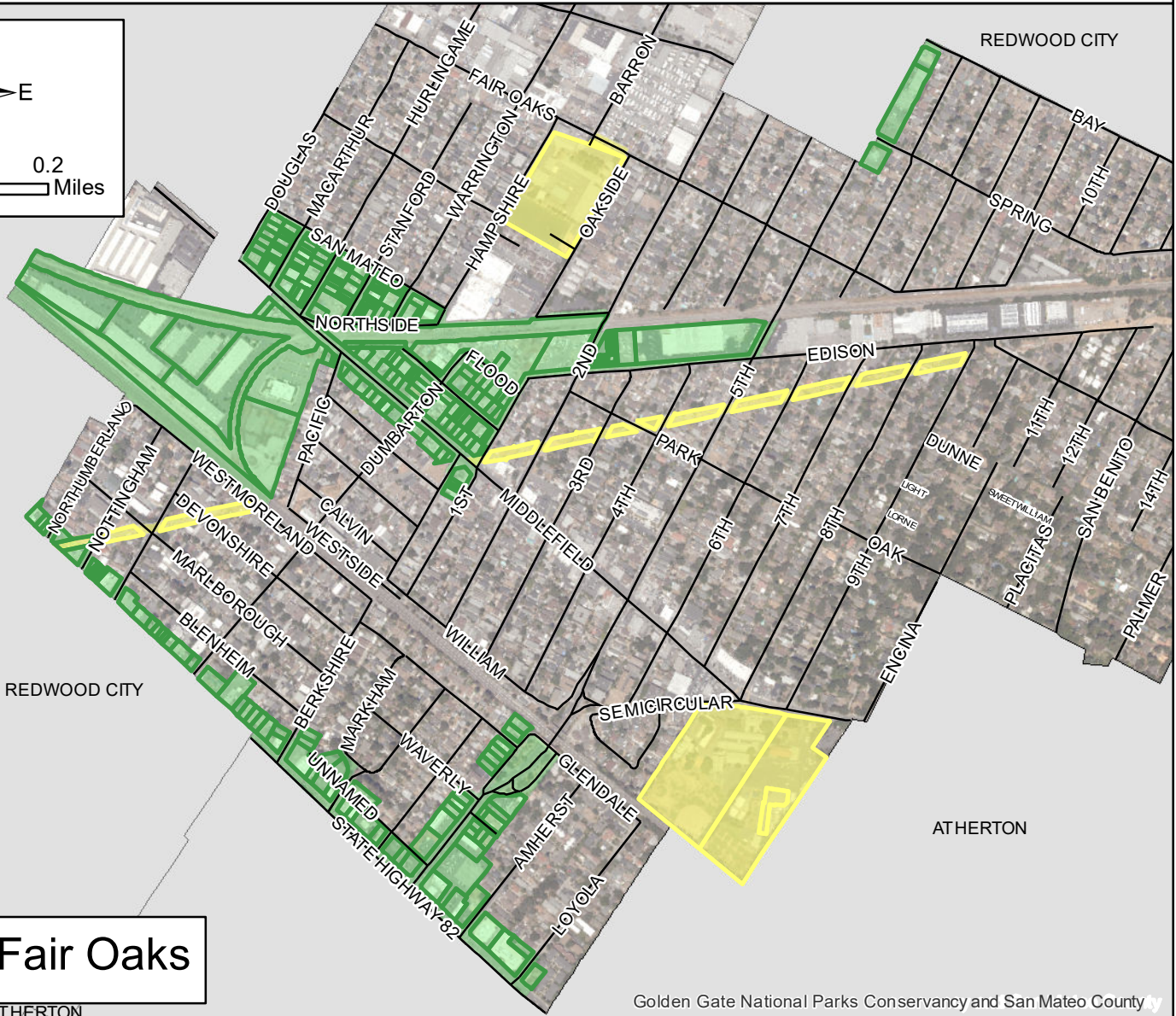
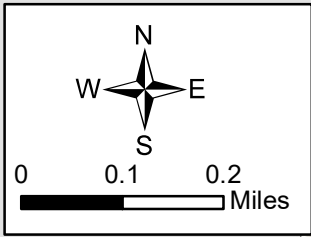
Broadmoor

Unincorporated Colma

- Commercial and Mixed Use Districts
- Institutional General Plan Land Use
- Incorporated Areas Outside of Ordinance Jurisdiction

Note: This map is generally representative of most areas affected by the ministerial process for Child Care Centers that would be established by the Ordinance. Other areas primarily affected include, but are not limited to, properties of unincorporated San Mateo County with existing Institutional or Public Facility structures. The map may include some properties unaffected by the Ordinance which do not meet the criteria of the Ordinance and do not qualify for a ministerial permit.

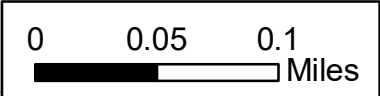
Maps of Zoning Districts Primarily Affected by the New Ministerial Process of the Child Care Ordinance (Non-Coastal/Non-Residential)



North Fair Oaks

Golden Gate National Parks Conservancy and San Mateo County

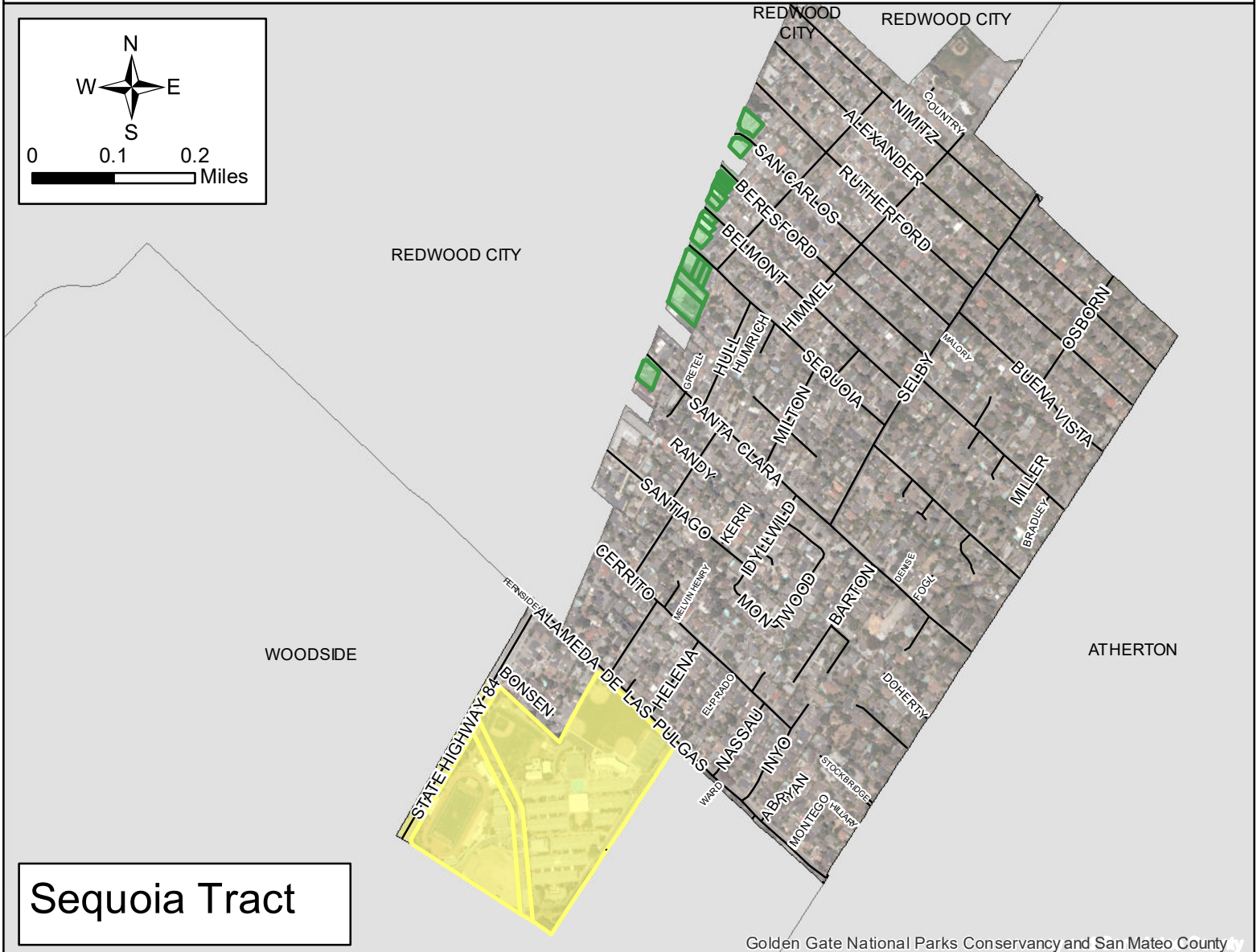
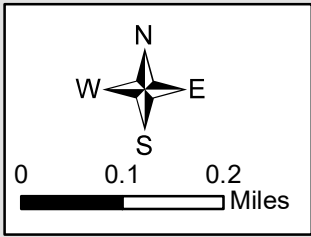
North Fair Oaks



- Commercial and Mixed Use Districts
- Institutional General Plan Land Use
- Incorporated Areas Outside of Ordinance Jurisdiction

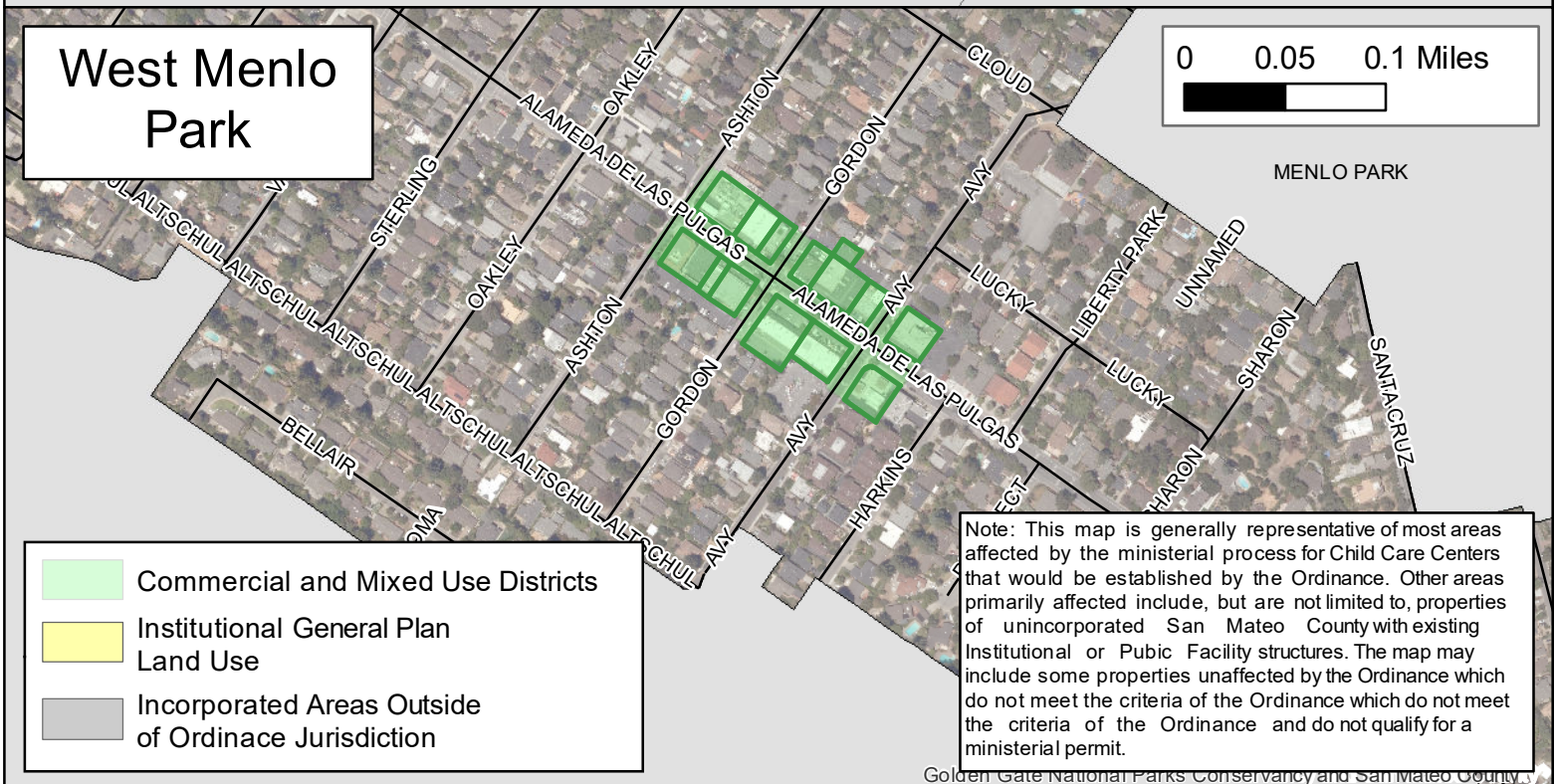
Note: This map is generally representative of most areas affected by the ministerial process for Child Care Centers that would be established by the Ordinance. Other areas primarily affected include, but are not limited to, properties of unincorporated San Mateo County with existing Institutional or Public Facility structures. The map may include some properties unaffected by the Ordinance which do not meet the criteria of the Ordinance which do not meet the criteria of the Ordinance and do not qualify for a ministerial permit.

Golden Gate National Parks Conservancy and San Mateo County

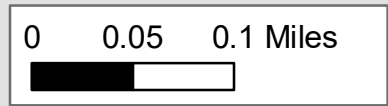


Sequoia Tract

Golden Gate National Parks Conservancy and San Mateo County



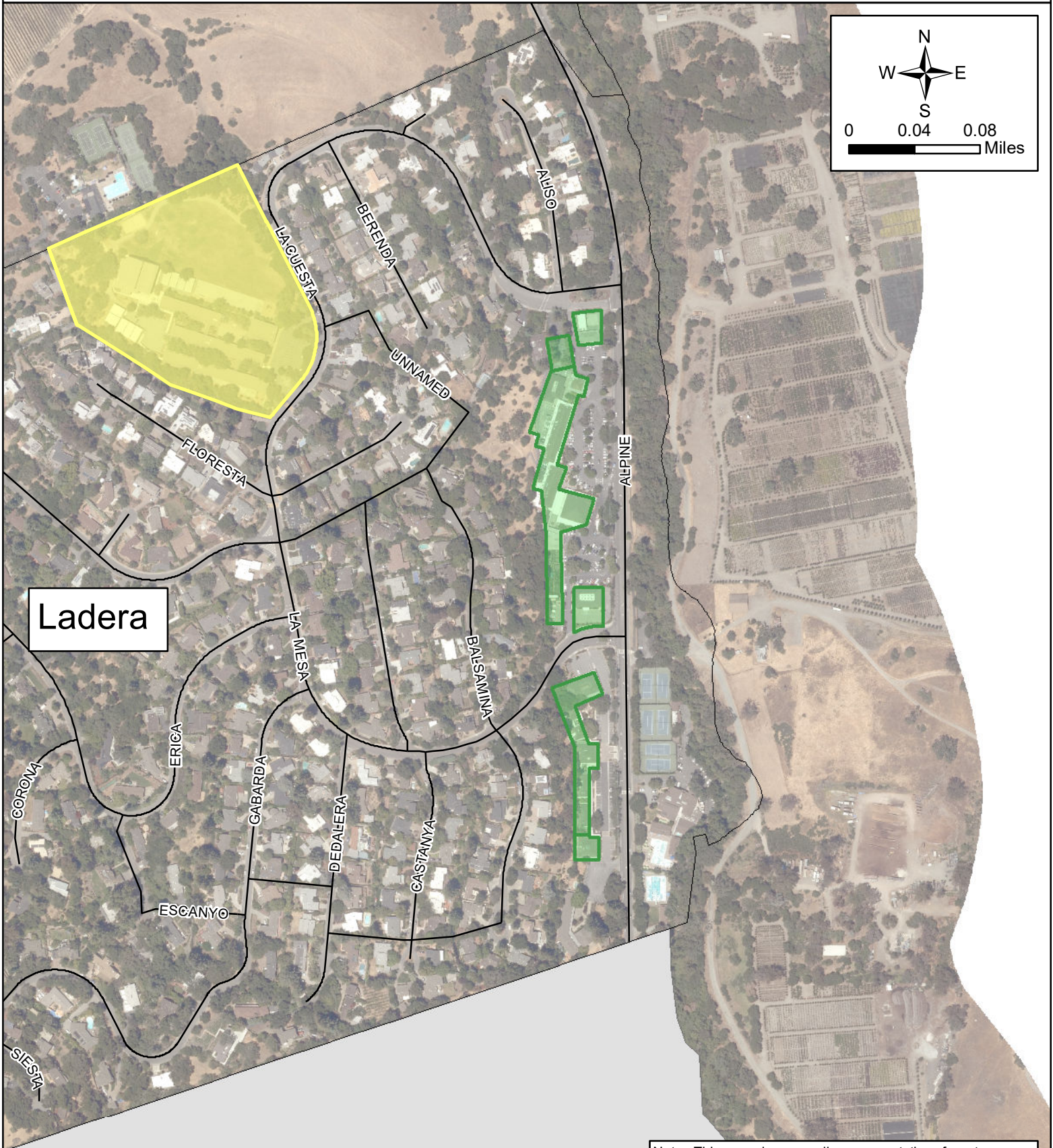
West Menlo Park



- Commercial and Mixed Use Districts
- Institutional General Plan Land Use
- Incorporated Areas Outside of Ordinance Jurisdiction

Note: This map is generally representative of most areas affected by the ministerial process for Child Care Centers that would be established by the Ordinance. Other areas primarily affected include, but are not limited to, properties of unincorporated San Mateo County with existing Institutional or Public Facility structures. The map may include some properties unaffected by the Ordinance which do not meet the criteria of the Ordinance and do not qualify for a ministerial permit.

Golden Gate National Parks Conservancy and San Mateo County

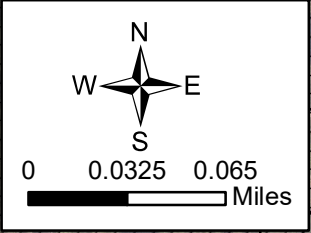


Ladera

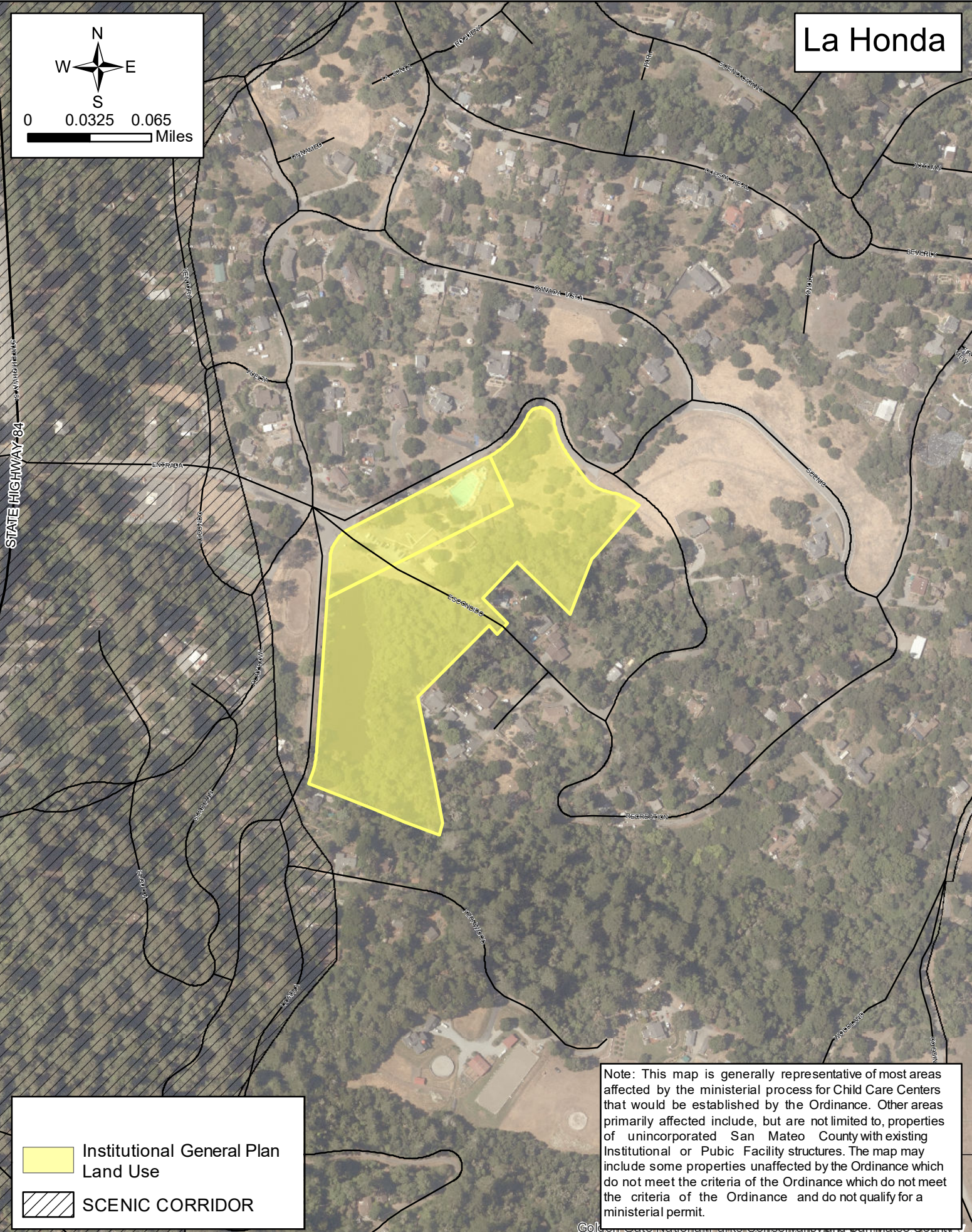
- Commercial and Mixed Use Districts
- Institutional General Plan Land Use
- Incorporated Areas Outside of Ordinance Jurisdiction

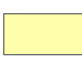
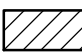
Note: This map is generally representative of most areas affected by the ministerial process for Child Care Centers that would be established by the Ordinance. Other areas primarily affected include, but are not limited to, properties of unincorporated San Mateo County with existing Institutional or Public Facility structures. The map may include some properties unaffected by the Ordinance which do not meet the criteria of the Ordinance and do not qualify for a ministerial permit.

# La Honda

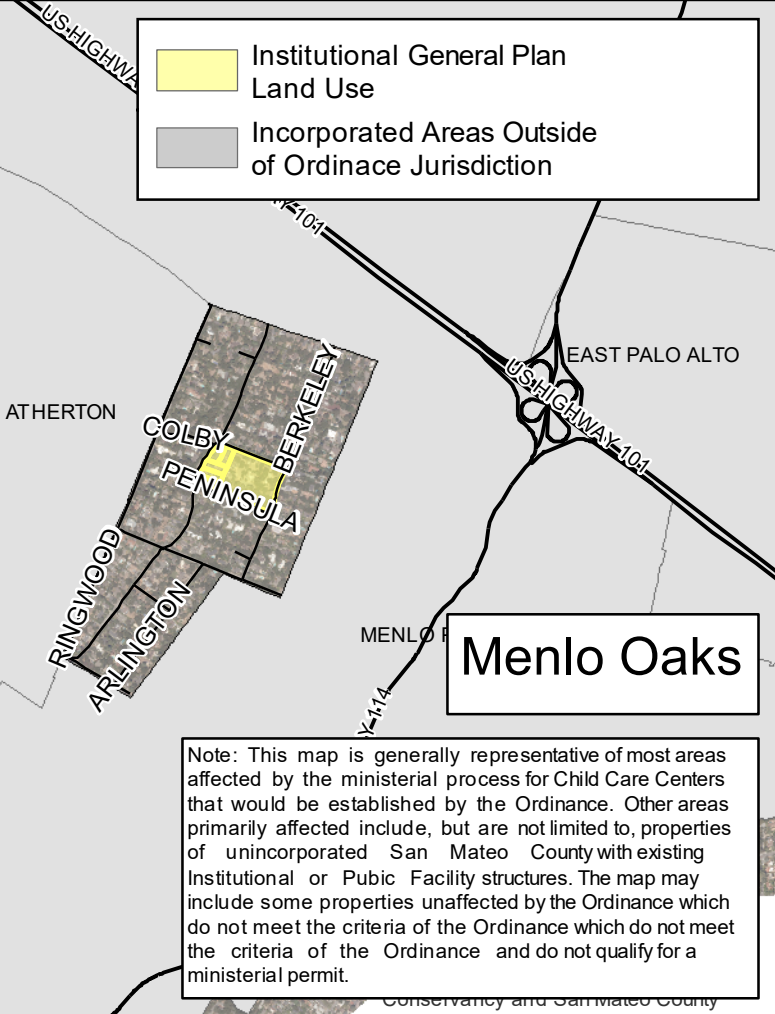
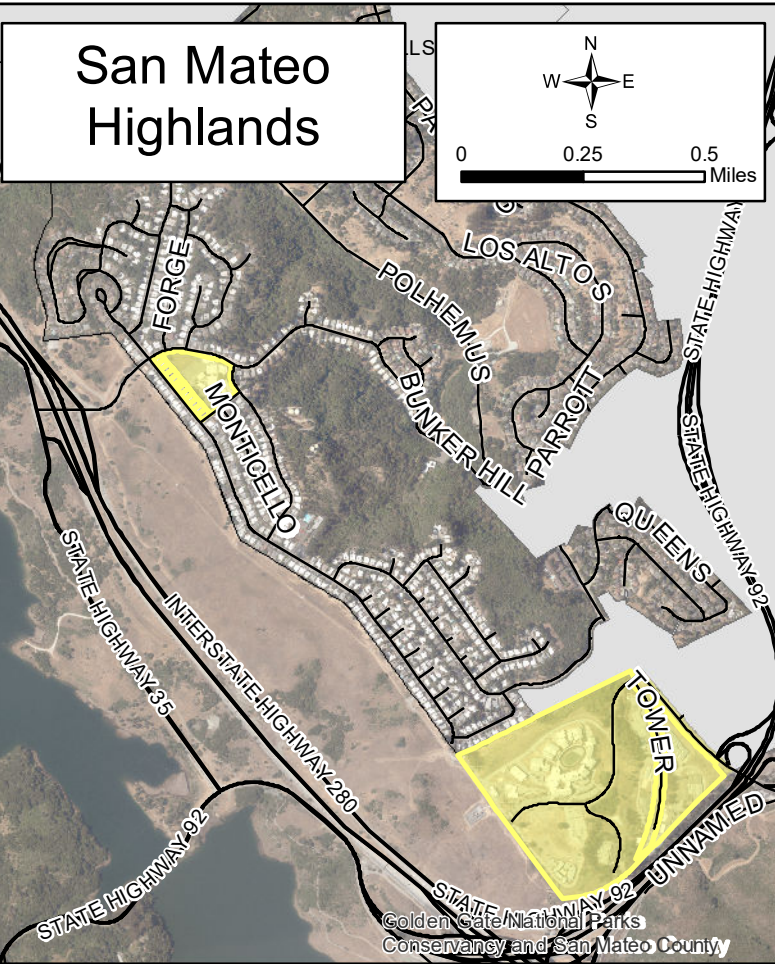


0 0.0325 0.065 Miles



-  Institutional General Plan Land Use
-  SCENIC CORRIDOR

Note: This map is generally representative of most areas affected by the ministerial process for Child Care Centers that would be established by the Ordinance. Other areas primarily affected include, but are not limited to, properties of unincorporated San Mateo County with existing Institutional or Public Facility structures. The map may include some properties unaffected by the Ordinance which do not meet the criteria of the Ordinance and do not qualify for a ministerial permit.



**Legend**

- Institutional General Plan Land Use
- Incorporated Areas Outside of Ordinance Jurisdiction

**Note:** This map is generally representative of most areas affected by the ministerial process for Child Care Centers that would be established by the Ordinance. Other areas primarily affected include, but are not limited to, properties of unincorporated San Mateo County with existing Institutional or Public Facility structures. The map may include some properties unaffected by the Ordinance which do not meet the criteria of the Ordinance and do not qualify for a ministerial permit.